



Owenacurra River & Dungourney River (Midleton) Flood Relief Scheme

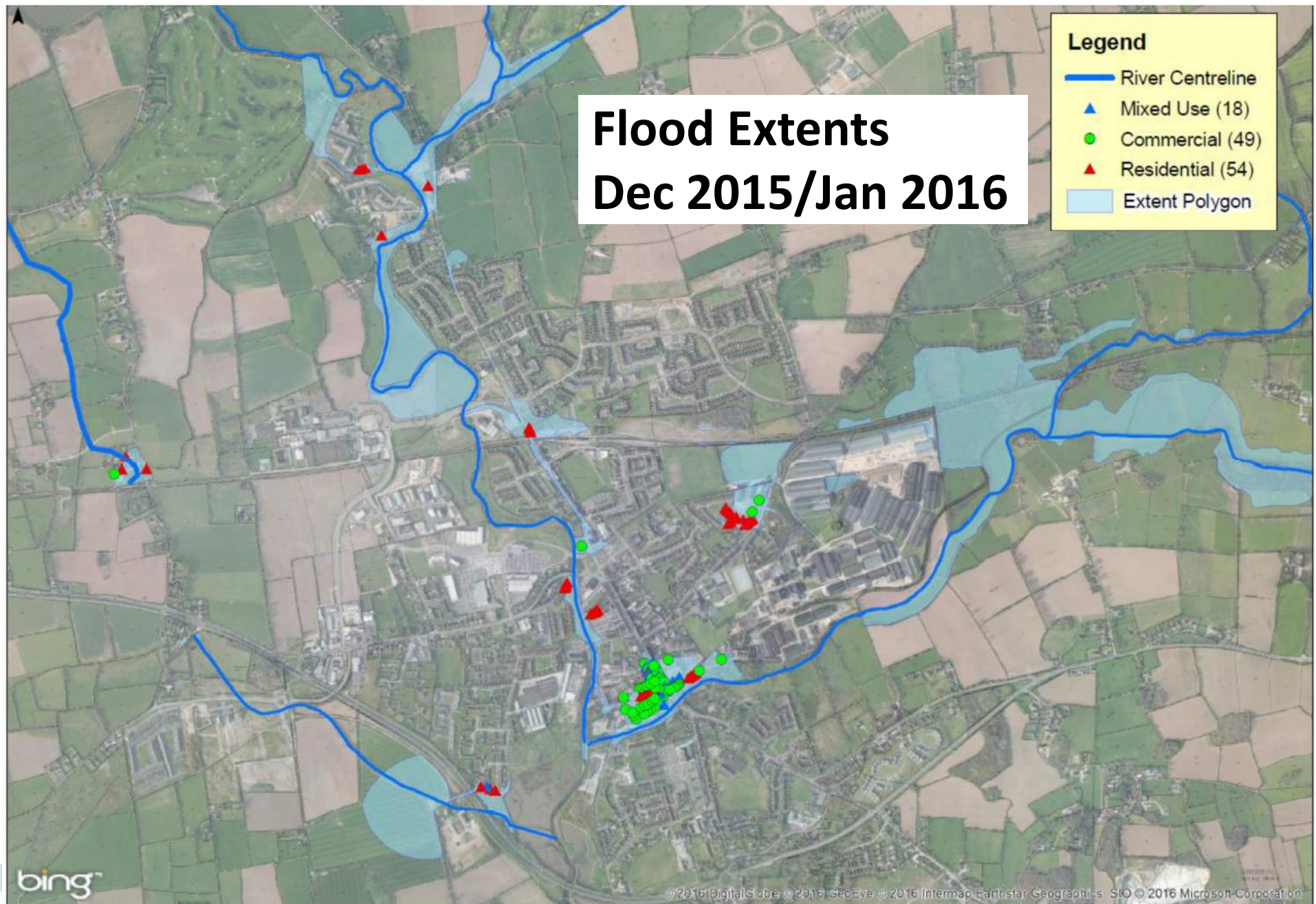
Briefing to Public Representatives - 06th March 2017

ARUP

Background

- History of recent flooding Nov 2000, Oct 2004, May 2005, Jun 2012, Jul 2013, Jan-Feb 2014, Oct 2014, Dec 2015, Jan 2016
- Lee CFRAM Study outlined some possible measures
- Middleton Flood Relief Scheme commissioned in Nov 2016



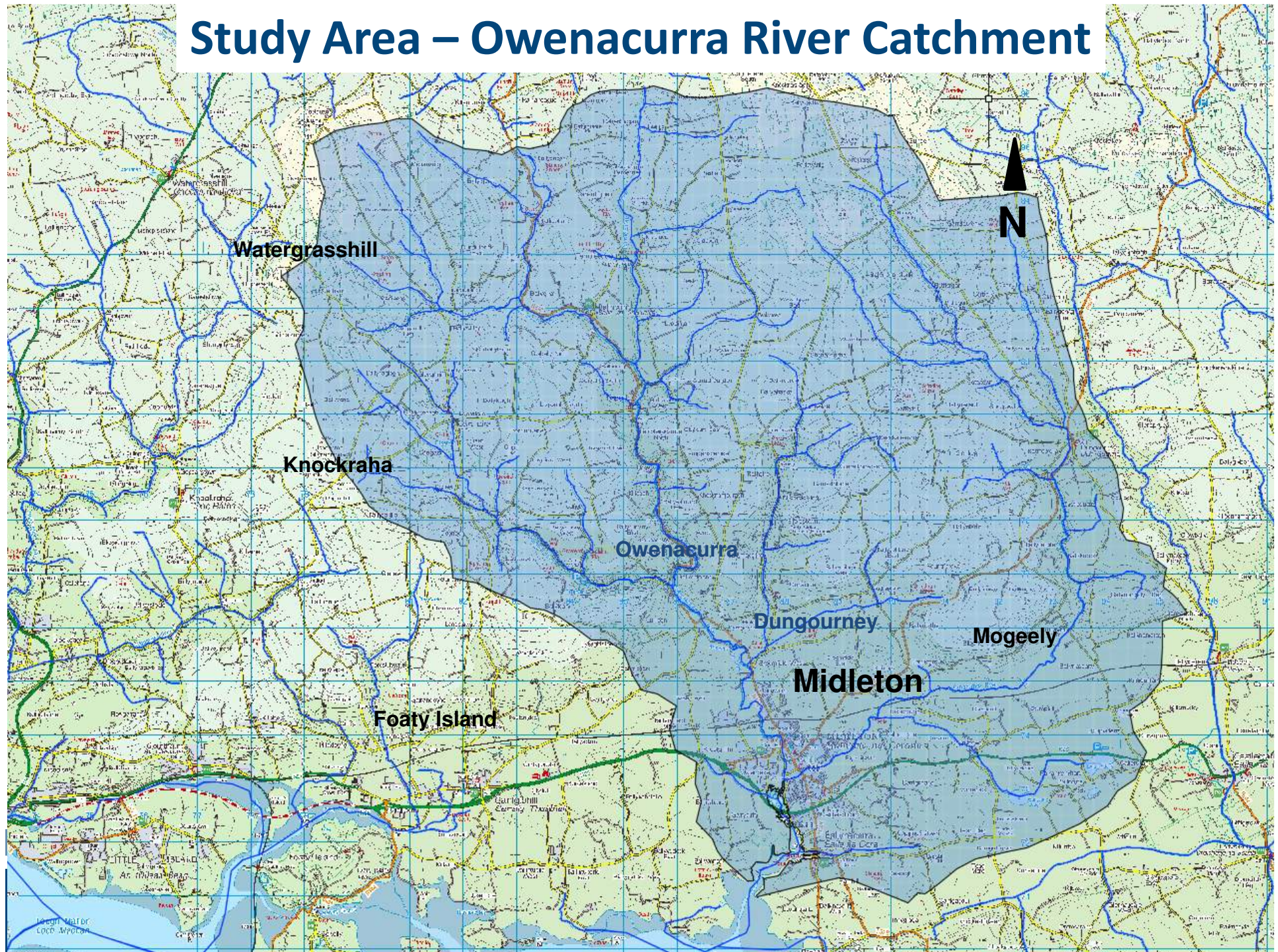


Project Steering Group



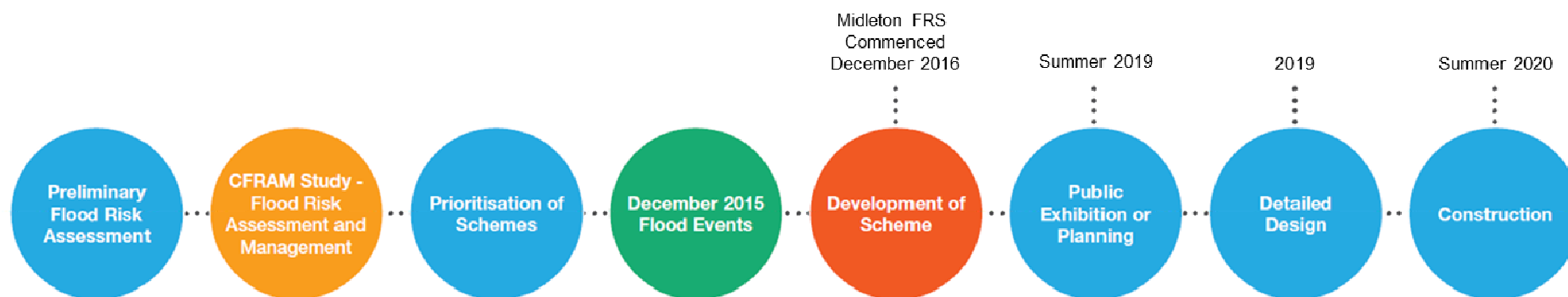
ARUP

Study Area – Owenacurra River Catchment



Outline Delivery Programme

Stage	Description	Key dates
Stage I	Development of a number of flood defence options and the identification of a preferred Scheme	Complete by mid 2018
Stage II	Public Exhibition of Scheme	Complete by Spring/Summer 2019
Stage III	Detailed Design, Confirmation and Tender	Complete by Summer 2020
Stages IV and V	Construction and Handover of the Works	Commence Summer 2020



Key Public Consultation Dates

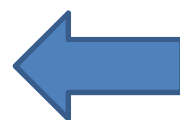
Stage	Description	Key dates
Public Consultation Day No. 1	Constraints Stage	23 rd March 2017 (Midleton Park Hotel – 3pm to 7pm)
Public Consultation Day No. 2	Emerging Preferred Option	Mid 2018
Formal Public Exhibition of Scheme	Statutory Exhibition of Scheme	Complete by Summer 2019

Project e-mail:

midletonfrs@arup.com

Project website:

www.midletonfrs.ie



**Request for
information on past
flood events**

Process of Environmental & Engineering Study

Environmental Assessment		Engineering Study	
Stage I	Constraints Study (this stage)	Stage I	Scheme Development
	Invasive Species		Data Gathering, Surveying and SI
	Prelim. Screening		Hydrology Study & Hydraulic Modelling
			Development of Flood Risk Management Options
	Environmental Assessment of Viable Options		Selection of Preferred Option
Stage II	Environmental Impact Statement and Appropriate Assessment	Stage II	Public Exhibition or Part 8 Planning
		Stage III	Detailed Design
		Stage IV	Construction

Key Stage 1 Activities

- Data Collection (including anecdotal info on historic flooding)
- Environmental Constraints Study
- Site Investigation/Surveys (starting this month)
- Hydrological Analysis and Hydrogeological Analysis
- Assessment of surface water drainage system on Main Street
- Hydraulic Modelling and Flood Mapping
- Invasive species survey and advance treatment
- Development of Potential Options
- Appraisal of Options (including environmental, MCA and CBA)
- On-going Public Consultation
- Selection of Preferred Option



Manhole covering karst conduit



Some Key Issues

- Lessons learned from Winter 2015 flood
- Protection against Groundwater, Fluvial, Tidal and Drainage (Pluvial) Flooding
- Blockage risk and maintenance schedule
- Lee CFRAM solutions – Direct Defences, Public Awareness and FFS
- Significant developments since Lee CFRAM carried out.



Key Issues (continued)



- Stakeholder and Landowner Consultation
- Timescale for Delivery
- Consideration of Climate Change
- European Designated sites - Great Island Channel SAC and Cork Harbour SPA
- Archaeological/architectural/cultural heritage – numerous features
- Bridges in Midleton and cluster of protected features within the IDL site

Selection of Potential Solutions to be considered

- Flood Warning System
- Potential Upstream Storage
- Local Conveyance Improvements
- Direct Defences (Walls, Embankments)
- Localised pumping of surface water
- Flow Diversion (e.g. river diversion or flood flow bypass channel)
- Etc.





Owenacurra River & Dungourney River (Midleton) Flood Relief Scheme

Project email: midletonfrs@arup.com

Project website: www.midletonfrs.ie

ARUP