

## CONTACT US

You can keep in touch with the project through our website where we will be posting updates on progress and details of ongoing works.

For further enquiries feel free to contact us via email or post at:

**Dundalk FRS Community Liaison / Project Manager**

**Project Office:** Dundalk Flood Relief Scheme Project Team, Binnies, c/o RSK, Bluebell Business Centre, Old Naas Road, Bluebell, Dublin 12, D12 NXF5, Ireland

**Email address:** [DundalkArdeeFRS@binnies.com](mailto:DundalkArdeeFRS@binnies.com)

## RELEVANT LINKS

**Website:** [www.floodinfo.ie/frs/en/dundalk/home](http://www.floodinfo.ie/frs/en/dundalk/home)



## DUNDALK & ARDEE

### Flood Relief Scheme

**Newsletter No. 01**

*February 2021*



## BACKGROUND TO THE STUDY

The project involves two scheme areas; Dundalk & Blackrock and Ardee. Dundalk is an historic town that lies on the Castletown River, flowing into Dundalk Bay on the east coast of Ireland. It has strong architectural and cultural heritage, forming part of 'Ireland's Ancient East'. Blackrock is a seaside village that forms part of the Dundalk metropolitan area and draws visitors to its' beach overlooking Dundalk Bay and the Cooley Mountains. Ardee is a small town on the banks of the River Dee which has undergone continuous development for several decades. It is a small project being run in tandem with Dundalk to provide benefits to all of the local communities as soon as possible.

Having suffered many previous flooding events throughout 2013-2016, as well as in 2020 and 2008, Dundalk and Blackrock are furthermore at significant risk of coastal flooding. With the future risk increased by climate change and the areas natural low-lying topography, calls for a sensitive flood relief scheme to be constructed to protect Dundalk and Blackrock from future flood events were set out in the Catchment Flood Risk and Management Study (CFRAM) published by the Office of Public Works (OPW) in 2018.

In August 2020, Binnies/Black & Veatch (BV) and Nicholas O'Dwyer (NOD) were appointed by Louth County Council to develop a flood relief scheme to protect Dundalk, Blackrock and Ardee which is technically, socially, environmentally and economically acceptable



*Figure 1 A view of the Lord Limerick embankment and the protected Salt Marshes*



*Figure 2 A view of Blackrock promenade with waves hitting the current sea wall.*



*Figure 3 A view of Rathgory River, Ardee.*

to protect the areas of Dundalk, Blackrock and Ardee. An important aspect of the appointment in Dundalk and Blackrock is the integration of the flood scheme with the Great Eastern Greenway, which will ultimately connect Dublin to Belfast, improving community benefits and the tourism potential for the area.

The works likely to take place in all areas are hard defences (walls & embankments), improvement of channel conveyance (maintenance & culvert upgrade), and floodplain storage measures.

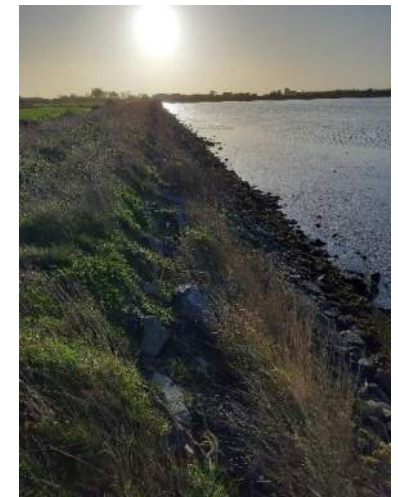
## WHAT STAGE IS THE STUDY AT?

It is recognised that it is important that all works planned are based off the most accurate and up to date information. Since appointment, the BV/NOD team have been reviewing all relevant sources of information, including the previous CFRAM study, to identify any gaps where additional surveys or information may be required. These checks will be enhanced and finalized upon receipt of any data held by the client.



*Figure 4 An image of a previous flood in the Fairgreen area, Dundalk (Jan 2020).*

In addition to reviewing existing data, work has also commenced on the hydrological analysis, Greenway route constraints study, and the Defence Asset Condition Surveys. A 360-degree camera is available for 'livestreamed walkovers' with the UK teams and other staff affected by COVID-19 travel restrictions. This is envisaged to allow for a virtual modelling team site visit to see the 'live' watercourses and to enable the specification of surveys to proceed. Progress is being made identifying the environmental surveys which are critical to be undertaken throughout the winter months, to avoid any possible project delays.



*Figure 5 A view of the Lord Limerick embankment and current condition.*

Initial Defence Asset Condition Surveys have been undertaken to offer a preliminary review of the condition of current assets and whether any immediate works are required to help keep the flooding risk to local communities as small as possible.

A project website is in development to help keep all stakeholders informed on how the project is progressing, distribute up-to-date information and allow people the opportunity to have their say as the scheme is developing.

## OUTLINE SCHEME PROGRAMME

ACTIVITY	2020	2021	2022	2023	2024	2025	2026	2027	2028
Data Collection & surveys	■	■							
Hydrological analysis	■	■							
Hydraulic analysis		■	■						
Scheme development		■	■	■					
Planning		■	■	■	■				
Detailed design			■	■	■	■			
Construction				■	■	■	■	■	
Scheme Handover								■	■

\*Timelines provided as current best estimate and are subject to revision

## NEXT STEPS

**Data Collection and Review:** Ongoing task where BV/NOD will continue to collect data, such as photos, videos, sketches, imagery, and any other relevant information which will help inform surveys and subsequent design stages.

**Detailed Surveys:** BV/NOD are currently scoping additional surveys such as environmental surveys, topographical surveys and site investigation works to ensure there is adequate data to develop the scheme design. Once scoping is complete, the appointment of specialist survey contractors will be made to complete the tasks.



Figure 6 A view of Navy Bank Walk, Dundalk and the current flood defence

**Environmental Assessment:** Work will continue on the scoping of environmental surveys, with a priority given to winter surveys. In parallel an environmental impact scoping assessment, environmental constraints survey and Invasive Species Management Plan will be progressed.



Figure 7 A seal photographed in Dundalk Bay. Environmental Surveys are currently being organised.

**Hydrological Analysis:** Modelling is being progressed to understand how the river systems respond to weather events. This will include a validity check of the existing models used for the CFRAM study.

**Defence Asset Condition Surveys:** Further detailed surveys are being undertaken to ascertain the exact condition of existing defences, what risks are present, and the level of protection they currently provide.



Figure 8 The Lord Limerick embankment photographed Jan-2020, with the sea completely submerging the marsh area. (See Figure 1 for a comparison to normal conditions).



Figure 9 Dundalk port area in Jan-2020, with the water level overtopping the defences.