



Plate 226: North-facing view of Weir F052.



Plate 227: West-facing view of modern Weir F053 (1m scale).

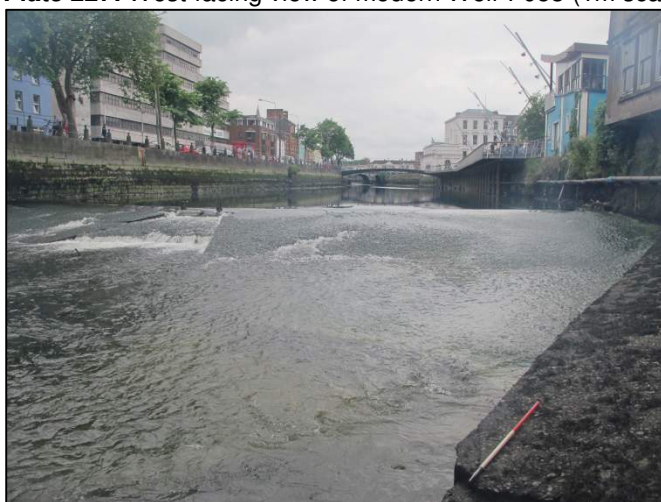


Plate 228: West-facing view of Weir F054, located upstream of Parliament Bridge (1m scale).



Plate 229: West-facing view of timber structure (F055) located on intertidal foreshore at Lee Mills (1m scale).



Plate 230: Aerial view of timber structure (F055) located on intertidal foreshore at Lee Mills (1m scales).



Plate 231: North-facing view along Timber T from timber structure (F055) located on intertidal foreshore at Lee Mills (1m/150mm scales).



Plate 232: South-facing view of terminus of Timber T10 from timber structure (F055) located on intertidal foreshore at Lee Mills (150mm scale).



Plate 233: View of scarf-joint between timbers T1-T2 from timber structure (F055) located on intertidal foreshore at Lee Mills (150mm scale).



Plate 234: View of scarf-joint between timbers T4-T5 from timber structure (F055) located on intertidal foreshore at Lee Mills (150mm scale).



Plate 235: Example shot of one of the of forged iron pin used timbers fasten together timber structure F055 (150mm scale).



Plate 236: Example shot of one of the of forged iron pin used timbers fasten together timber structure F055 (150mm scale).



Plate 237: East-facing view of intertidal area upstream of timber structures F055 and F056 (1m scale).



Plate 238: West-facing view of timbers forming F056a (1m/150mm scales).



Plate 239: West-facing view of timbers forming F056b (1m/150mm scales).



Plate 240: South-facing view of timbers Arch No. 1 (1m scale).



Plate 241: South-facing view of timbers Arch No. 2 (1m scale).



Plate 242: South-facing view of timbers Arch No. 3 (1m scale).



Plate 243: South-facing view of timbers Arch No. 4 (1m scale).



Plate 244: South-facing view of intertidal foreshore located adjacent to Lee Mills.



Plate 245: Southeast-facing view of intertidal foreshore located adjacent to Lee Mills (1m scale).



Plate 246: Diver entering the water at location downstream of St. Patricks Bridge, North Channel.



Plate 247: Diver undertaking survey along Albert Quay East in the South Channel.

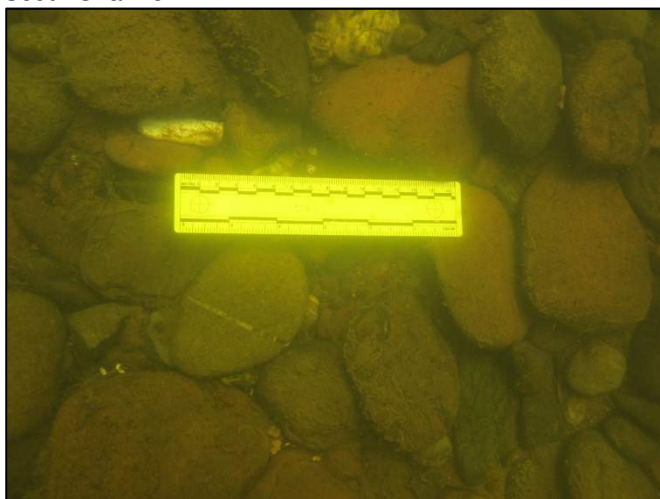


Plate 248: Underwater shot of riverbed extending across the central channel of the River Lee at the Ballincollig assessment area (150mm scale).



Plate 249: Underwater shot showing exposed section of bedrock protruding from the riverbed (150mm scale).

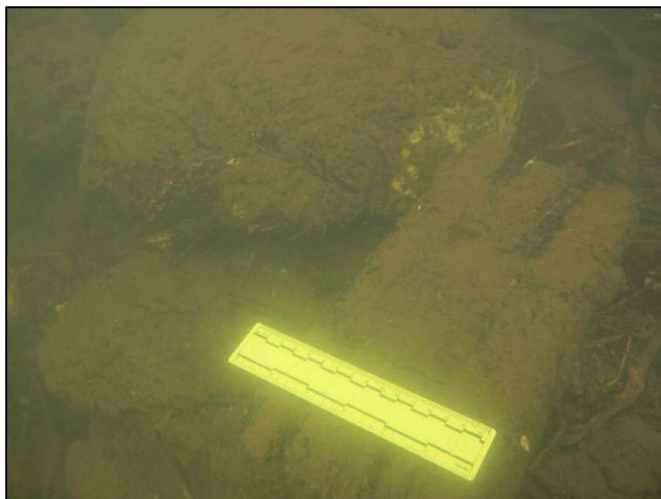


Plate 250: Underwater shot showing modern dumped material located adjacent to the northern riverbank (150mm scale).

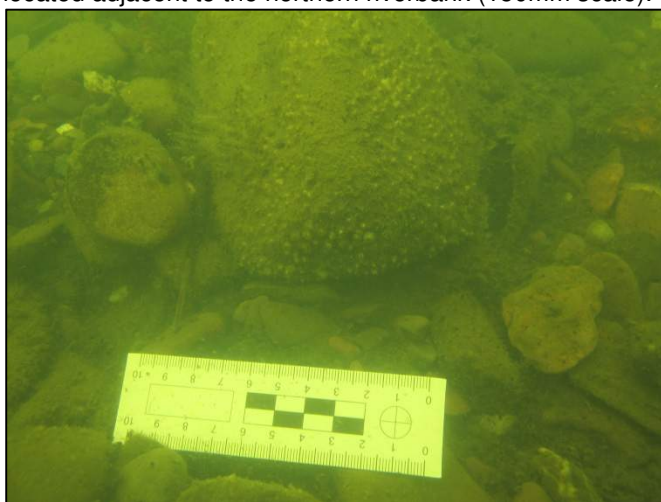


Plate 251: Underwater shot showing the sub-tidal riverbed upstream of St. Vincent's Bridge (100mm scale).



Plate 252: Underwater shot showing the sub-tidal riverbed between St. Vincent's Bridge and Griffith Bridge.

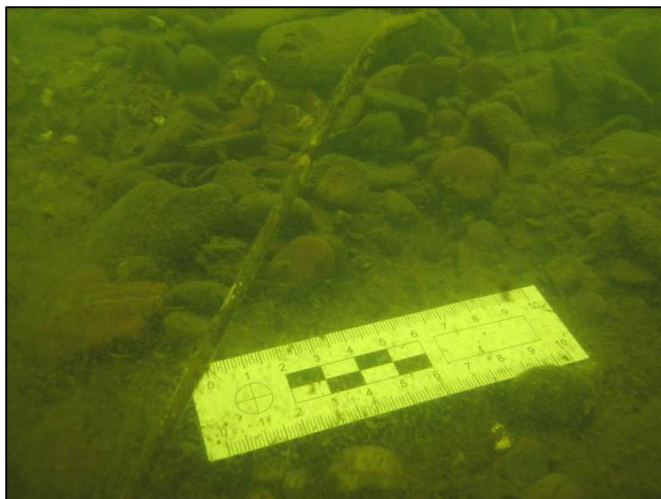


Plate 253: Underwater shot showing the sub-tidal riverbed downstream of Griffith Bridge (100mm scale).

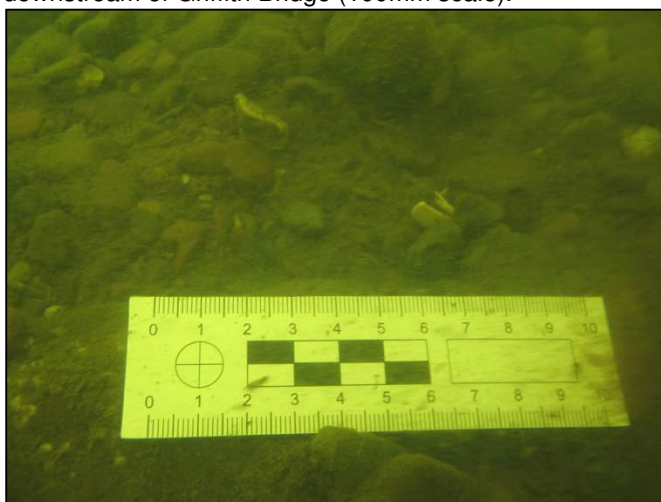


Plate 254: Underwater shot showing the sub-tidal riverbed upstream of Brian Boru Bridge (100mm scale).



Plate 255: Underwater shot showing the riverbed downstream of Michael Collins Bridge (100mm scale).



Plate 256: South-facing view of riverbed/bank side area at location of proposed flow-control structure on the South Channel (1m scale).

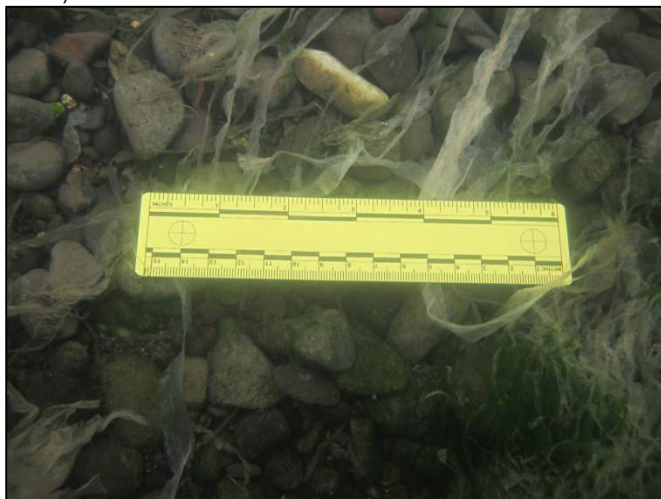


Plate 257: Underwater shot showing riverbed upstream of Clarke's Bridge (150mm scale).



Plate 258: Underwater shot showing riverbed upstream of North Gate Bridge (150mm scale).

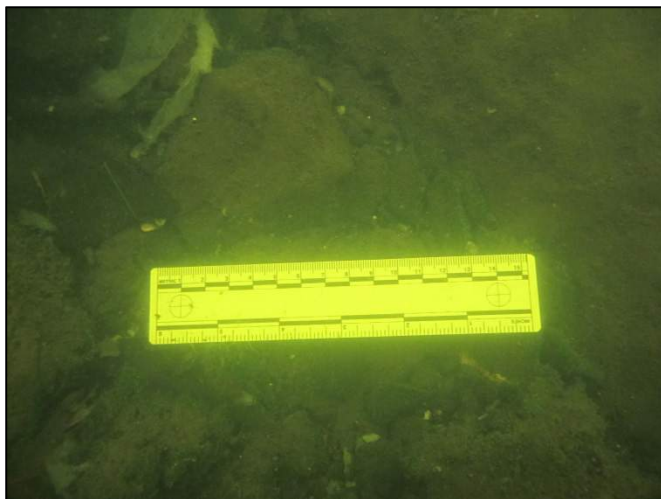


Plate 259: Underwater shot showing riverbed downstream of Parliament Bridge (150mm scale).

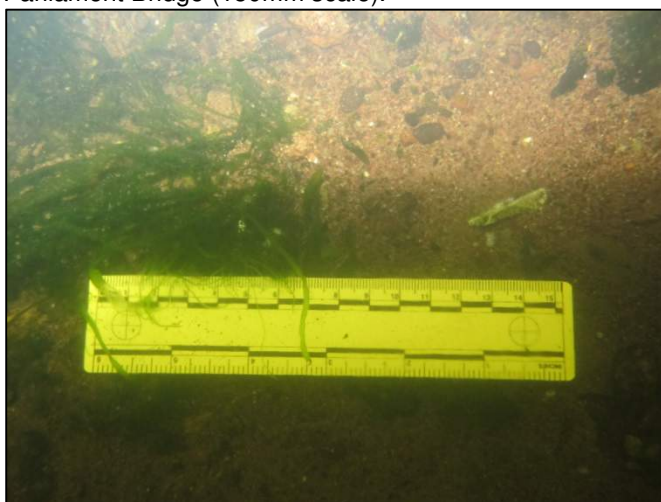


Plate 260: Underwater shot showing riverbed downstream of Trinity Footbridge (150mm scale).



Plate 261: West-facing view of metal-detection survey of intertidal foreshore at Lee Mills.



Plate 262: Miscellaneous items recovered as part of the metal-detection survey (100mm scale).



Plate 263: Selection of coins recovered as part of the metal-detection survey (100mm scale).



Plate 264: Selection of cutlery recovered as part of the metal-detection survey (100mm scale).



Plate 265: Rifle bullets and military or constabulary coat-button recovered as part of the metal-detection survey (100mm scale).



Plate 266: Detail shot of two pieces (front/back) of a military or constabulary coat-button recovered as part of the metal-detection survey (100mm scale).



Plate 267: Selection of clay pipe bowl and stem fragments (100mm scale).



Plate 268: Inner side of two fragments (rim and handle) of green-glazed red earthenware (100mm scale).



Plate 269: Two honing stones recovered from the intertidal survey at Lee Mills (100mm scale).



Plate 270: Top view of silver band from wooden base of trophy cup (100mm scale).



Plate 271: Side view of silver band from wooden base of trophy cup (100mm scale).

ADCO

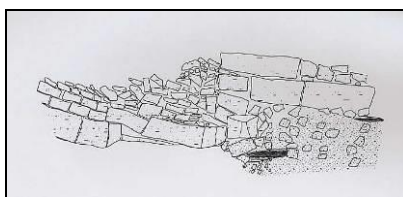
- Providing effective underwater and land-based archaeological solutions since 1999.
- Conducting intelligent diving and underwater/marine inspections for the civils and scientific sectors.
- All personnel are fully HSE-certified, capable and experienced.
- ADCO works closely with clients from project inception, through EIS, to full construction stages, delivering the highest quality effectively.

www.adco-ie.com

Recording prehistoric logboat at Gormanston, Co. Meath
GAS 2025 Irish Sea Interconnector



Underwater elevation of bridge pier collapsed in 1763. River Nore Flood Alleviation Scheme



Iron cannon on site of 17th-century timber wreck discovered during dredging programme Waterford Harbour

