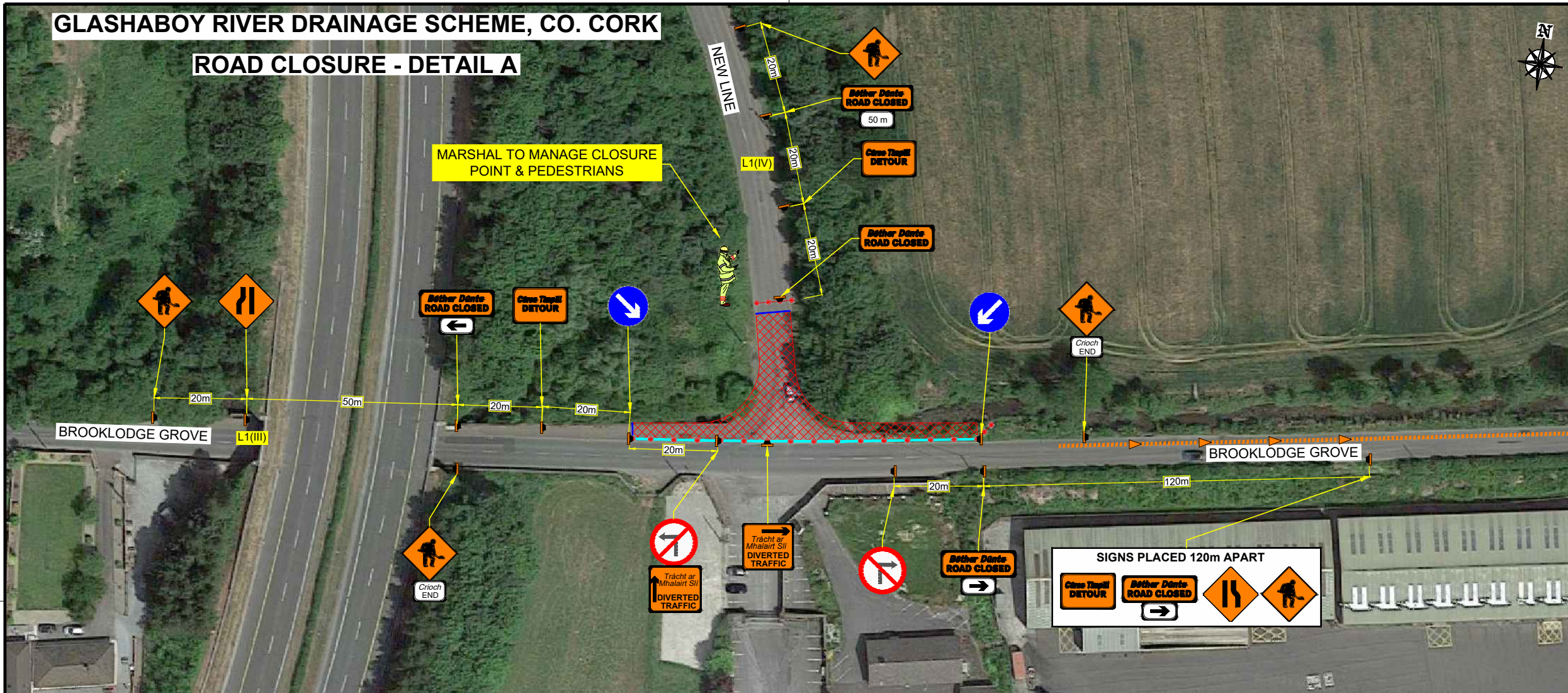
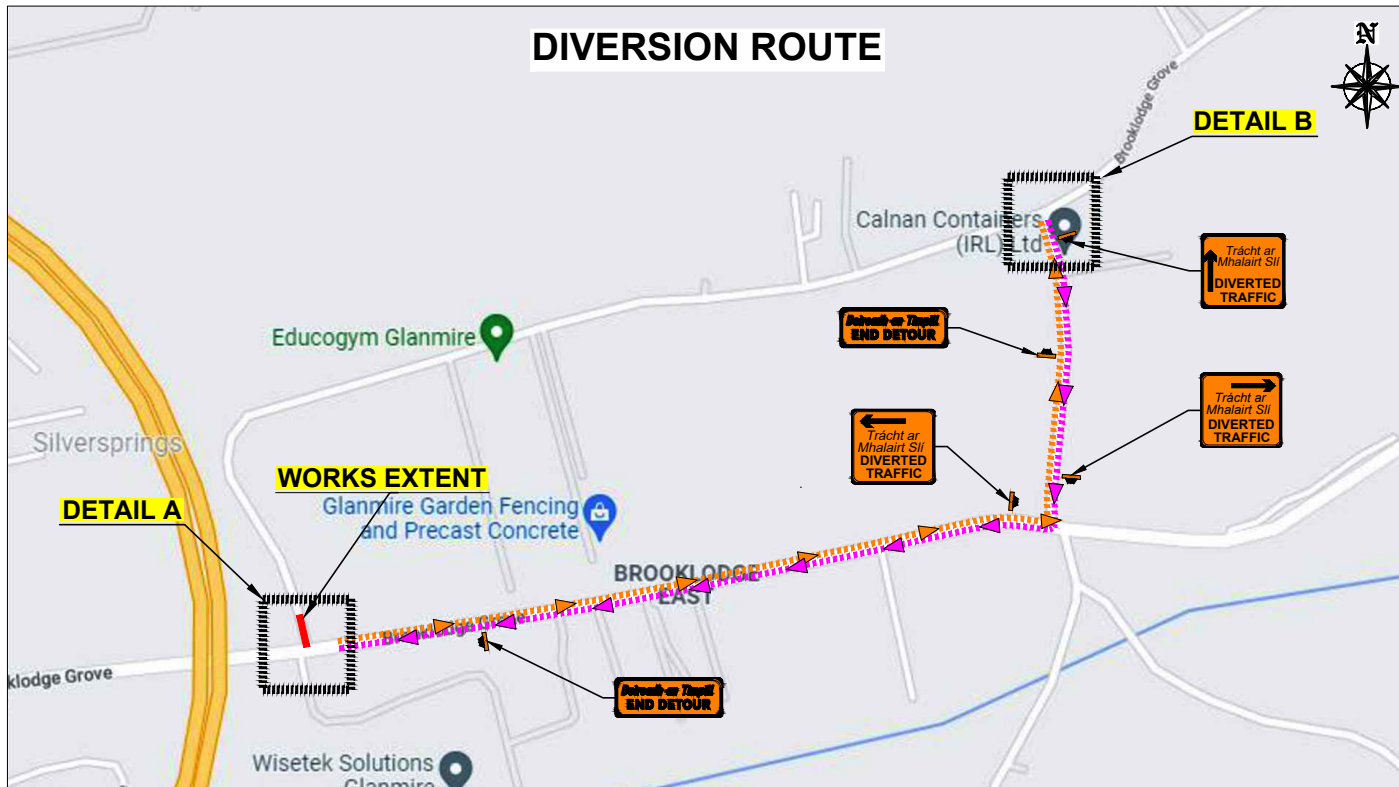
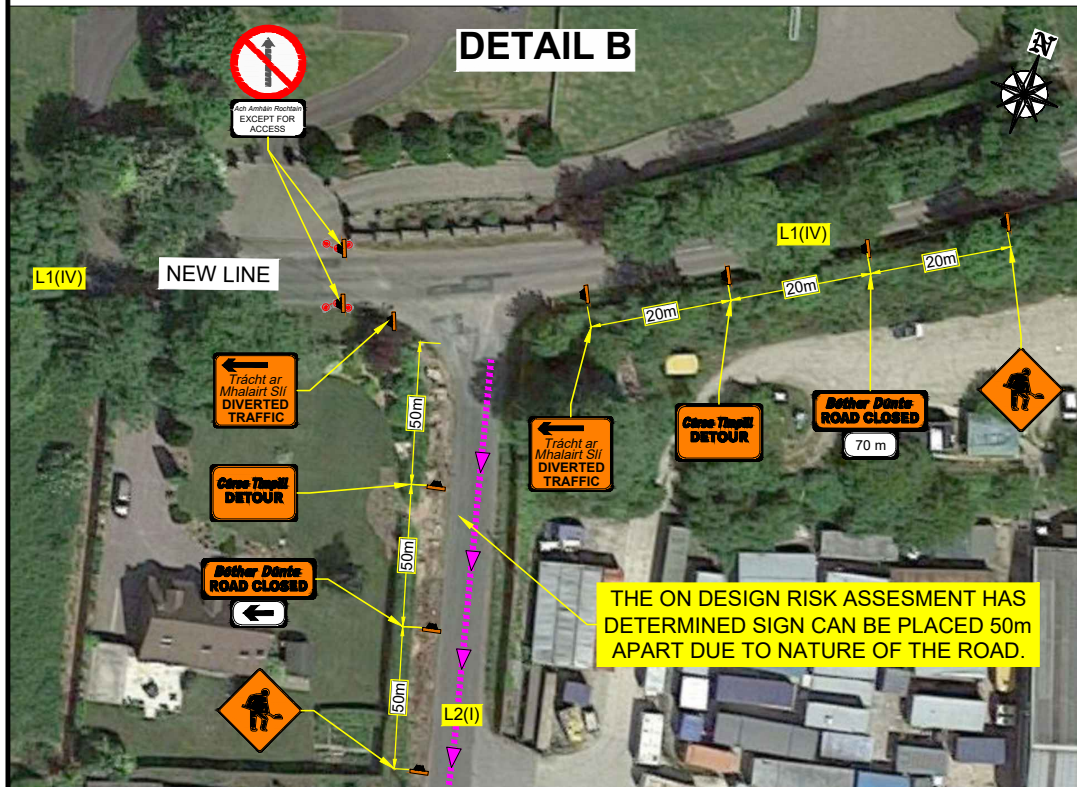
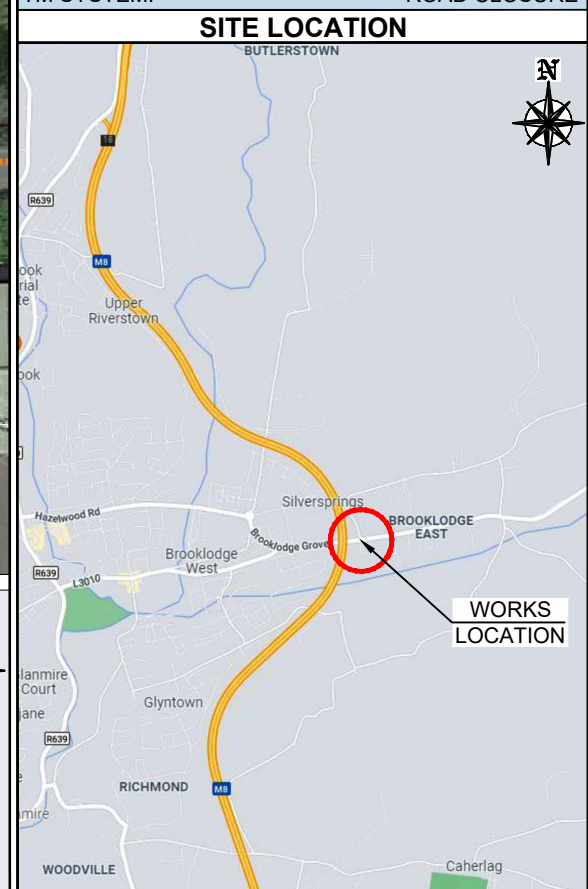


GLASHABOY RIVER DRAINAGE SCHEME, CO. CORK

ROAD CLOSURE - DETAIL A



DESIGN PARAMETERS	
CHAPTER 8 ROAD LEVEL:	1(III) / 1(IV) / 2(I)
SPEED LIMIT:	50 / 60 / 80km/h
ROADWORKS TYPE:	B
NUMBER OF SIGNS:	2 / 2 / 3
SIGN VISIBILITY:	50 / 60 / 90m
DISTANCE BETWEEN SIGNS:	20 / 20 / 120m
SIGNS SIZE RECTANGULAR - MIN.:	600mm
SIGNS SIZE CIRCULAR - MIN.:	600/600/750mm
CONE HEIGHT - MIN.:	N/A
TAPER CONE SPACING:	N/A
LONGITUDINAL CONE SPACING:	N/A
RATE OF TAPER:	N/A
SAFETY ZONE:	N/A
UNOBSTRUCTED WIDTH:	N/A
MAXIMUM LENGTH OF SHUTTLE:	N/A
MINIMUM LANE WIDTH:	N/A
TM SYSTEM:	ROAD CLOSURE



LEGEND	
	- TEMPORARY TRAFFIC SIGN
	- TRAFFIC CONES
	- SAFETY ZONE
	- WORKS AREA
	- PEDESTRIAN ROUTE
	- PEDESTRIAN BARRIERS
	- DIVERSION ROUTE
	- DIVERSION ROUTE

REV	DESCRIPTION	DATE	REV BY	CHK BY

CLIENT: **SORENSEN**

COMPLETE HIGHWAY MAINTENANCE

EMAIL: info@chmtd.ie / WEB: www.chmtd.ie

DUBLIN OFFICE
UNIT 28, SECOND AVE
COOKSTOWN INDUSTRIAL
ESTATE, D24 H9PA
TALLAGHT, CO. DUBLIN
TEL: (01) 424 2070

CORK OFFICE
UNIT 6, WATERGRASSHILL
BUSINESS PARK,
T56 TD42
WATERGRASSHILL,
CO. CORK
TEL: (0) 21 488 9581

GENERAL NOTES

- THIS TRAFFIC MANAGEMENT PLAN MAY ONLY BE IMPLEMENTED BY A TEMPORARY TRAFFIC OPERATIONS SUPERVISOR (TTOS) WHO MUST CARRY OUT A SITE RISK ASSESSMENT TO MODIFY (IF NECESSARY) THE MEASURES DESCRIBED TO SUIT ACTUAL SITE CONDITIONS BEFORE IMPLEMENTATION.
- THE TTOS MUST BE IN POSSESSION OF THE VALID CONSTRUCTION SKILLS REGISTRATION CARD 'SIGNING, LIGHTING, AND GUARDING AT ROADWORKS' CONSTRUCTION REGULATIONS 2006 AND 2013-2021 CONSTRUCTION REGULATIONS.
- THE TTOS TO DETERMINE EXACT POSITION OF SIGNS CONSIDERING THE SITE SPECIFICS.

- IN ORDER THAT THE REQUIREMENTS SET OUT IN SECTION 17(2) OF THE SAFETY, HEALTH & WELFARE ACT (2005) AND SECTION 10 OF THE CONSTRUCTION REGULATIONS (2013-2021) ARE MET, THE PSCS MUST ADVISE THE PSPD AND ALL RELEVANT PARTIES OF ANY CHANGE TO THE TEMPORARY TRAFFIC MANAGEMENT PLAN.
- ALL WORKS ARE TO BE CARRIED OUT IN ACCORDANCE WITH LOCAL AUTHORITY REQUIREMENTS AND TO BE INCLUDED IN THE SITE SPECIFIC SAFETY & HEALTH PLAN.
- MAINTENANCE CHECKS SHOULD BE CARRIED OUT AT REGULAR INTERVALS AND IN ACCORDANCE WITH CONTRACT SPECIFICATIONS.
- TEMPORARY SIGNS SUPPORTS OR STANDS SHOULD BE DESIGNED IN ACCORDANCE WITH SPECIFICATION TS4.

- CONTRACTOR TO CARRY OUT A SITE RISK ASSESSMENT PRIOR TO THE INSTALLATION OF THE TRAFFIC MANAGEMENT PLAN TO ENSURE THAT CONDITIONS REFLECT THOSE CONSIDERED FOR DESIGN POST SUBMISSION.
- ALL SIGNS USED FOR THIS TRAFFIC MANAGEMENT PLAN MUST COMPLY WITH CHAPTER 8 OF TRAFFIC SIGNS MANUAL LATEST EDITION.
- WK 052 SHOULD BE USED TO INDICATE THE POSITION OF A SITE ENTRANCE AND/OR EXIT. REFER TO CH. 8 FOR USAGE. BANKSMEN TO MANAGE SITE ACCESS & EGRESS.
- THE ABSOLUTE MINIMUM WIDTH ALLOWED FOR PEDESTRIANS IS 1.0m.
- SAFETY BARRIERS USED FOR THIS TMP MUST COMPLY WITH TII DN-REQ-03034-1 IS EN 1317-1 e) TEMPORARY SAFETY BARRIER

- THE CONTRACTOR SHALL BE RESPONSIBLE FOR PROVIDING ALL REQUIRED RAMP ACCESS TO ALL CHANGES IN ROAD SURFACE LEVEL WHERE TRAFFIC RUNS ON A TEMPORARY SURFACE AND ALSO FOR CYCLE/PEDESTRIAN RAMPS WHERE THERE IS A LEVEL DISCONTINUITY AS A RESULT OF THE WORKS ON CYCLE PATHS & FOOTPATHS.
- ADDITIONAL SIGNS MAY BE USED TO COMPLEMENT THE SPECIFIC SIGNS USED AT THE ROADWORKS: WARNING SIGNS - YELLOW BACKGROUND - DESCRIBED IN CHAPTER 6, REGULATORY SIGNS - DESCRIBED IN CHAPTER 5, ETC. THEY ALL MUST COMPLY WITH THE SPECIFICATIONS OF 'TRAFFIC SIGNS MANUAL' AND 'TS4: GUIDELINES, CERTIFICATION SCHEME AND SPECIFICATION FOR CONSTRUCTION OF TRAFFIC SIGNS'.

PROJECT: **GLASHABOY RIVER DRAINAGE SCHEME CO. CORK**

TITLE: **ROAD CLOSURE**

DIRECTOR:	BE	PM:	MC	CHECKED:	LC	
SCALE:	NTS	DRAWN BY:	CB	DATE:	27/02/24	
STAGE:	CONSTRUCTION					
DRAWING NO.:	EN 6765 - 000 - 044				REV:	00