

Welcome to our event

Nicholas O'Dwyer Limited (NOD) has been commissioned to carry out the Wexford Town & Environs Flood Relief Scheme (FRS) by Wexford County Council (WCC), working in partnership with the Office of Public Works (OPW).



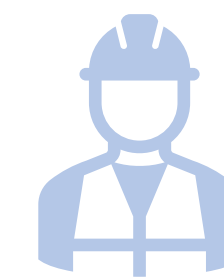
ABOUT US



Wexford County Council is the Local Authority for the scheme area and in partnership with the Office for Public Works (OPW) has commissioned this project. The project is being run by the Capital Projects department within Wexford County Council, which is responsible for the implementation and day to day management of the Scheme.

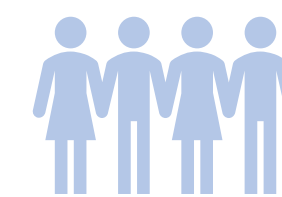


The OPW is the lead Agency for Flood Risk Management in Ireland. A key part of its role is to oversee and manage the implementation of a programme of investment in capital flood relief works and is providing funding and technical oversight for the Wexford Town and Environs Flood Relief Scheme. Under the Government's National Development Plan to 2030, the Government is investing €1.3bn to implement a proactive plan for managing Ireland's flood risk, from rivers and the sea, that includes future proofing the increased flood risk from climate change.



Nicholas O'Dwyer Ltd. is a consulting engineering firm with its head office in Dublin. Since its founding in 1932, Nicholas O'Dwyer Ltd. has carried out projects across Ireland and in 20 countries worldwide and is currently working on flood relief projects in Wexford, Tipperary, Louth, and Dublin. Nicholas O'Dwyer Ltd. is an RSK group company with offices in Dublin, Cork, Newry, Birmingham, and Johannesburg.

WHY ARE WE HERE TODAY

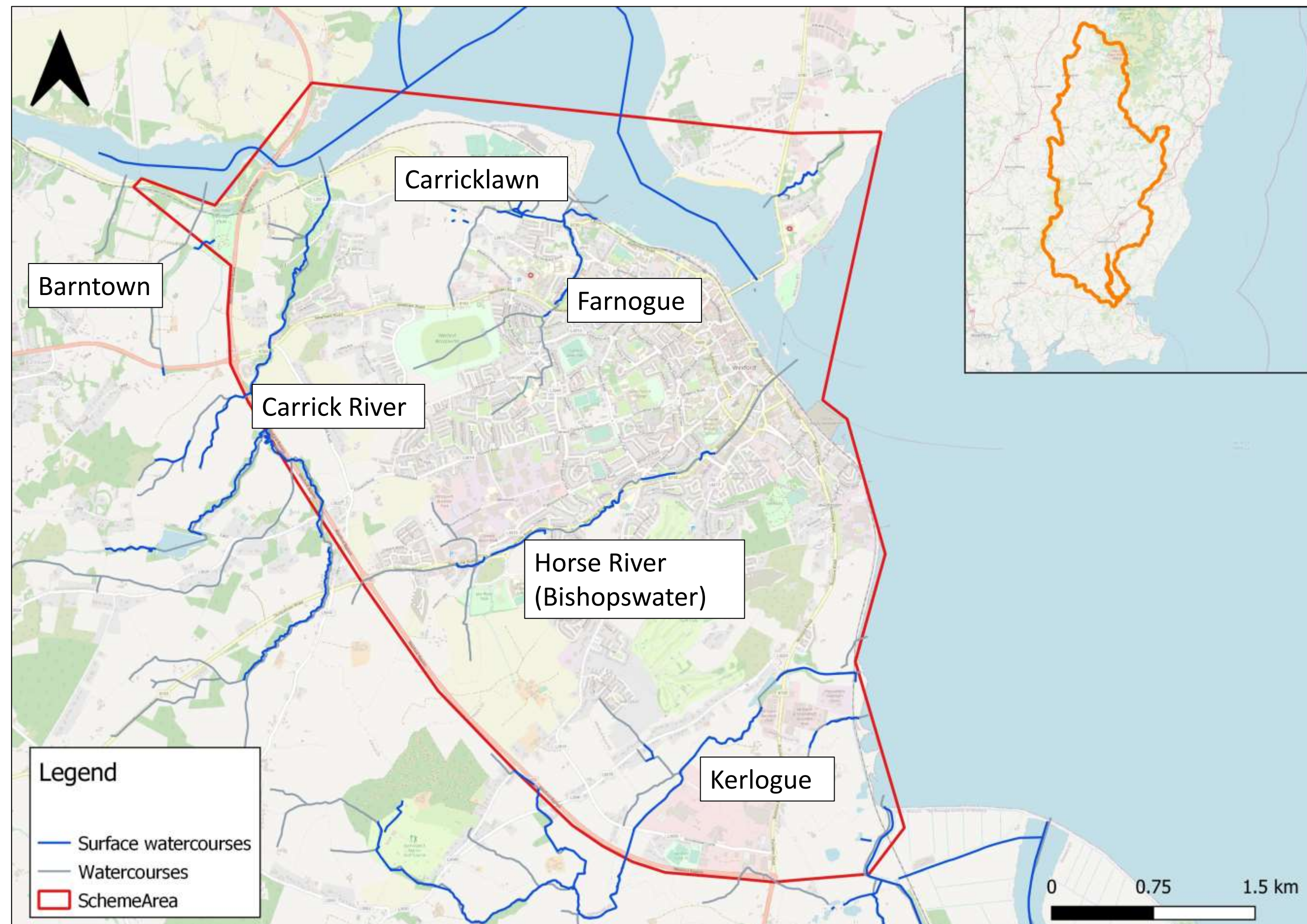


During this First Public Consultation Day (PCD) we are here to present the project, to seek your initial views in relation to the key issues that the Flood Relief Scheme should address and gain additional information on any recent flood events.

Scheme Introduction

The objective of this project is the identification, design, and submission (for planning consent) of a Flood Relief Scheme, that is technically, socially, environmentally, and economically acceptable, to alleviate the risk of flooding to the Community of Wexford Town & Environs to a determined Standard of Protection.

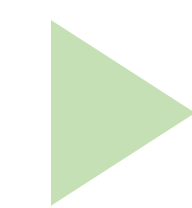
SCHEME AREA





The scheme area (red outline) includes approx. 10km of coastline and covers 6 watercourses with catchment areas less than 10km². The Barntown stream, Carrick river and Kerlogue river have predominantly rural catchments, while Carricklawn stream, Farnogue river and Horse River are highly urbanized.

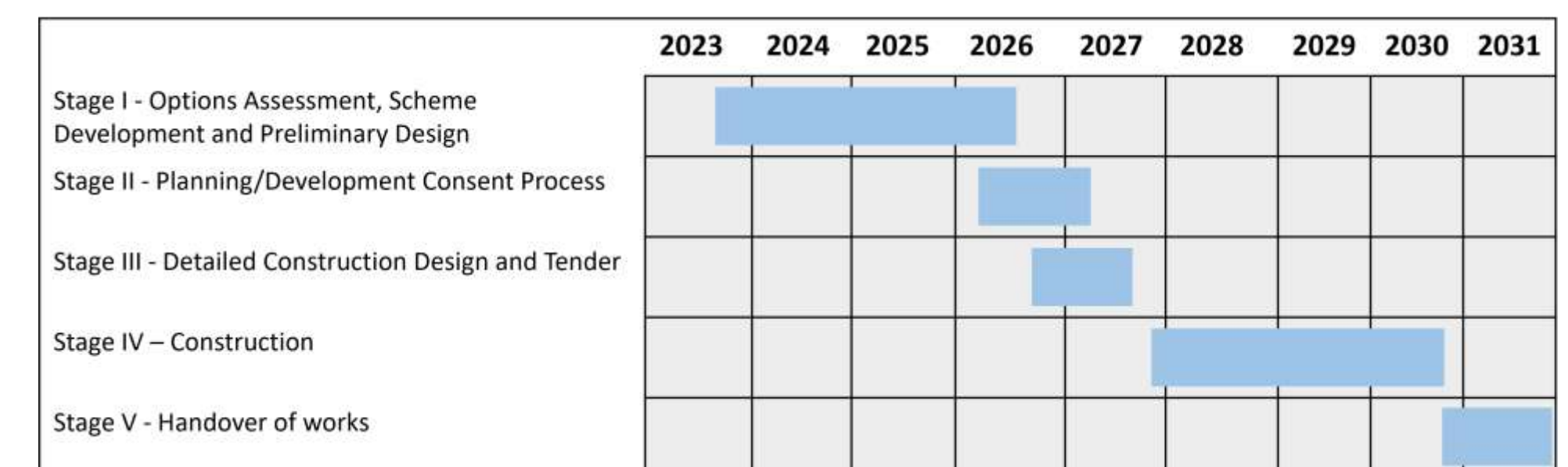
The scheme area includes part of the Slaney Estuary. The River Slaney drains a catchment of 1438km² (orange in the above inset figure) and drains via Wexford Town into Wexford Harbour. Within the scheme area on the Slaney estuary the water levels are highly influenced by tidal levels.

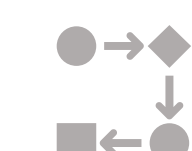
PROJECT OVERVIEW

 The starting point is a review of the measures proposed in the South-Eastern Catchment-based Flood Risk Assessment and Management (CFRAM) Study, which indicated the requirement for a flood relief scheme for Wexford Town and Environs. The CFRAM Study examined flood risk across 13,000km² in the south-east of Ireland. While the Study included an assessment of the fluvial risk from large watercourses minor watercourses were excluded from the catchment scale assessment.

 The current project will study the scheme area in more detail and aims to update the existing fluvial and coastal risk analysis by including additional minor watercourses with catchments of <1km², as well as by assessing the complex interaction between marine water levels, wave overtopping, and storm related flooding on watercourses. The scheme will improve the standard of flood protection for risk areas to protect against the 0.5% Annual Exceedance Probability (AEP) (1 in 200 year) Coastal flood event and 1% AEP (1 in 100 year) Fluvial flood event.

 The project will be implemented in five stages; preliminary design, planning consent, construction design and tendering, construction, and handover.



-  Next tasks:
- Topographic survey and Flow and Rainfall monitoring scoping.
 - Environmental screening to determine habitat and species surveys required for the coming season.
 - Hydrological and hydraulic analysis for the existing fluvial and coastal systems.

Past Flood Events

October 2004



September 2009

Park road



Stoney park



October 2023

Ferrycarrig bridge area



Coolballow road



Distillery road



Carricklawn road



Ballyboggan

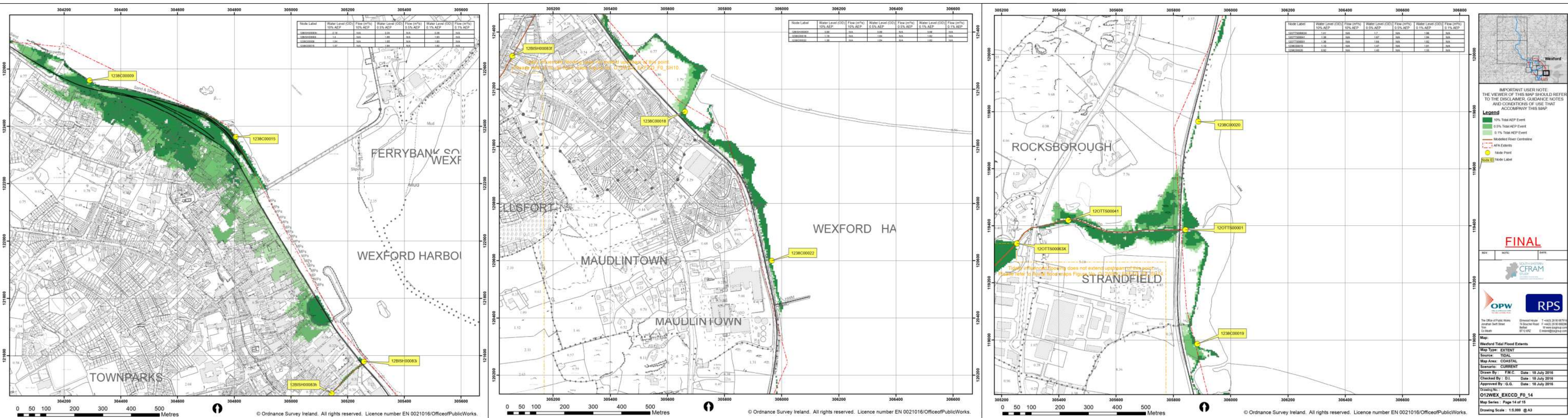
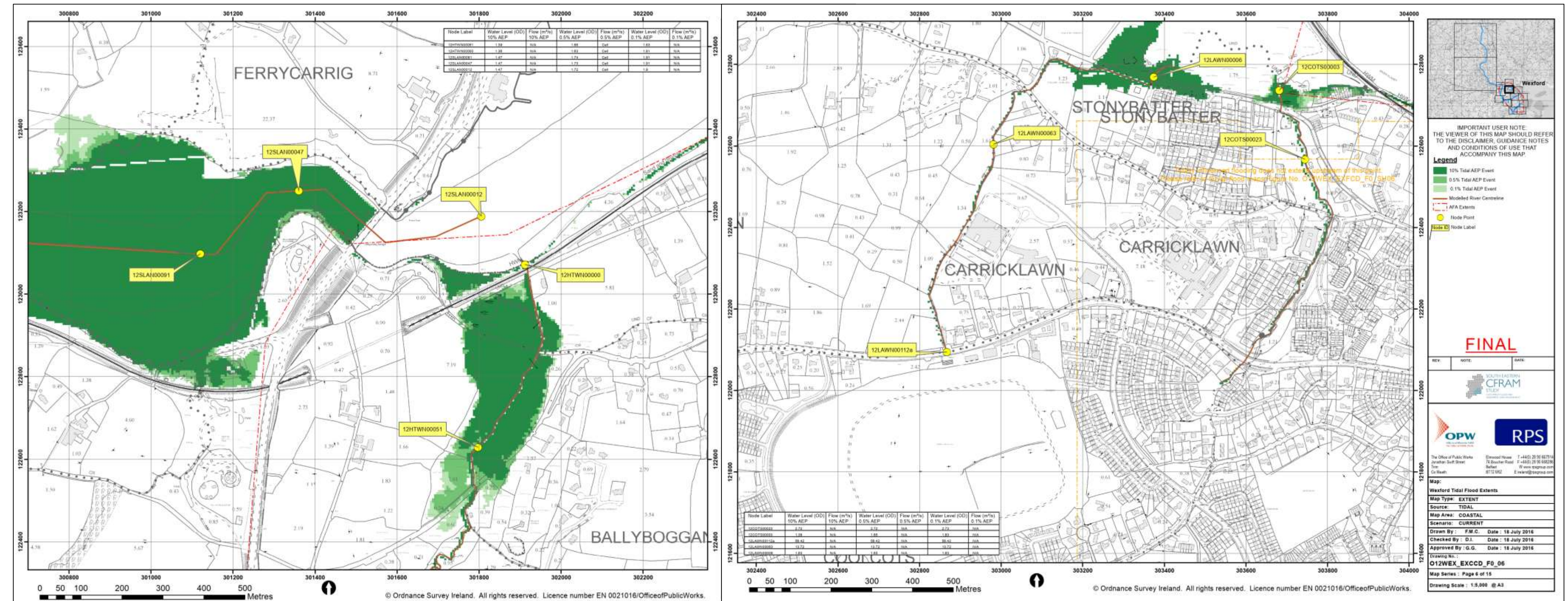


CFRAM Coastal Flood Hazard

CFRAM maps have been produced for the communities at potential risk from coastal flooding.

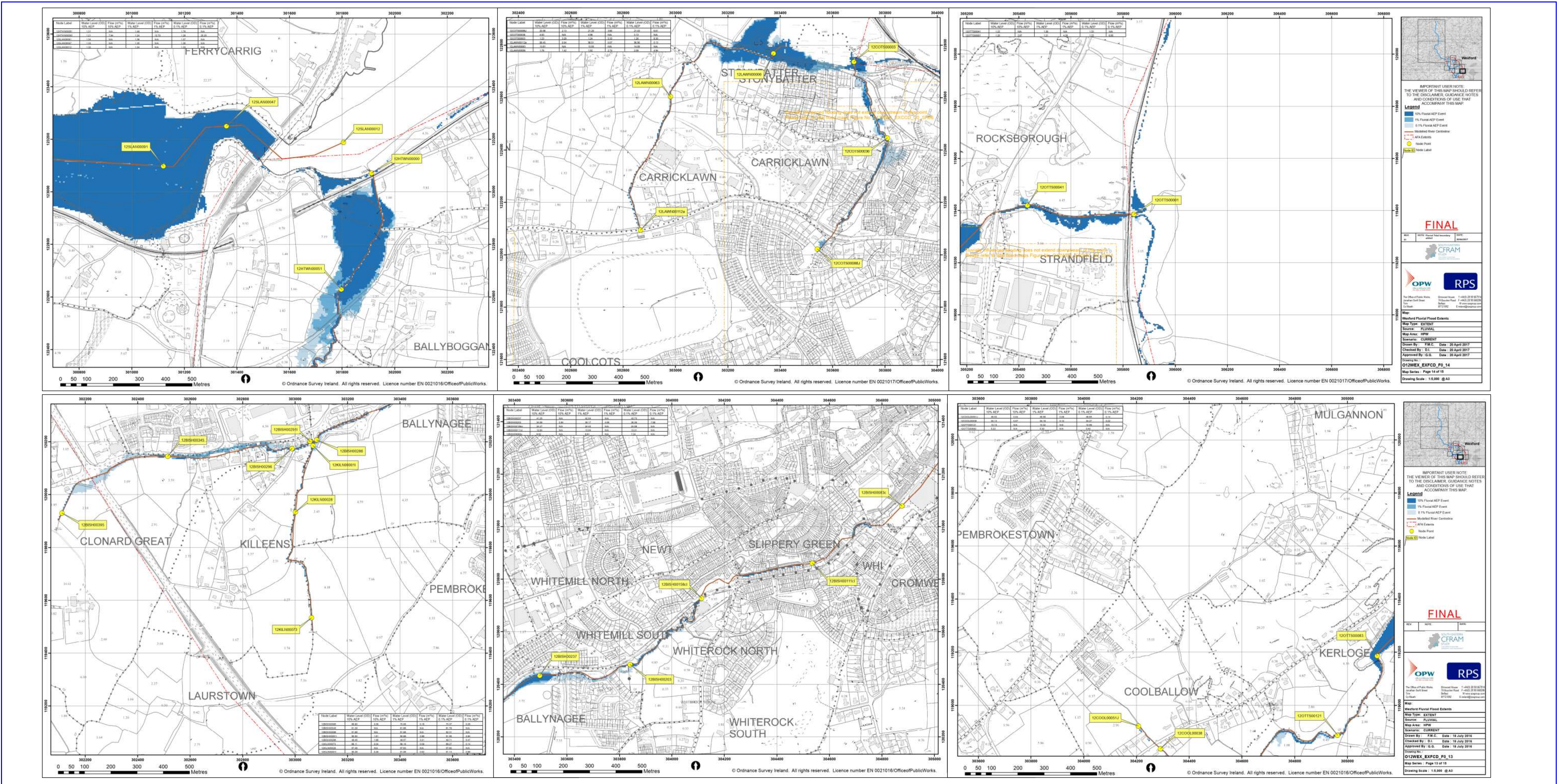
The 'predictive' flood maps show areas predicted to be inundated during a 'design' flood event with an estimated probability of occurrence, rather than information for actual floods that have occurred in the past.

These maps indicate the estimated extents, peak water levels and flows associated with flooding from only those estuaries and coastlines that have been modelled and have been developed taking account of effective flood defences.



CFRAM Fluvial Flood Hazard

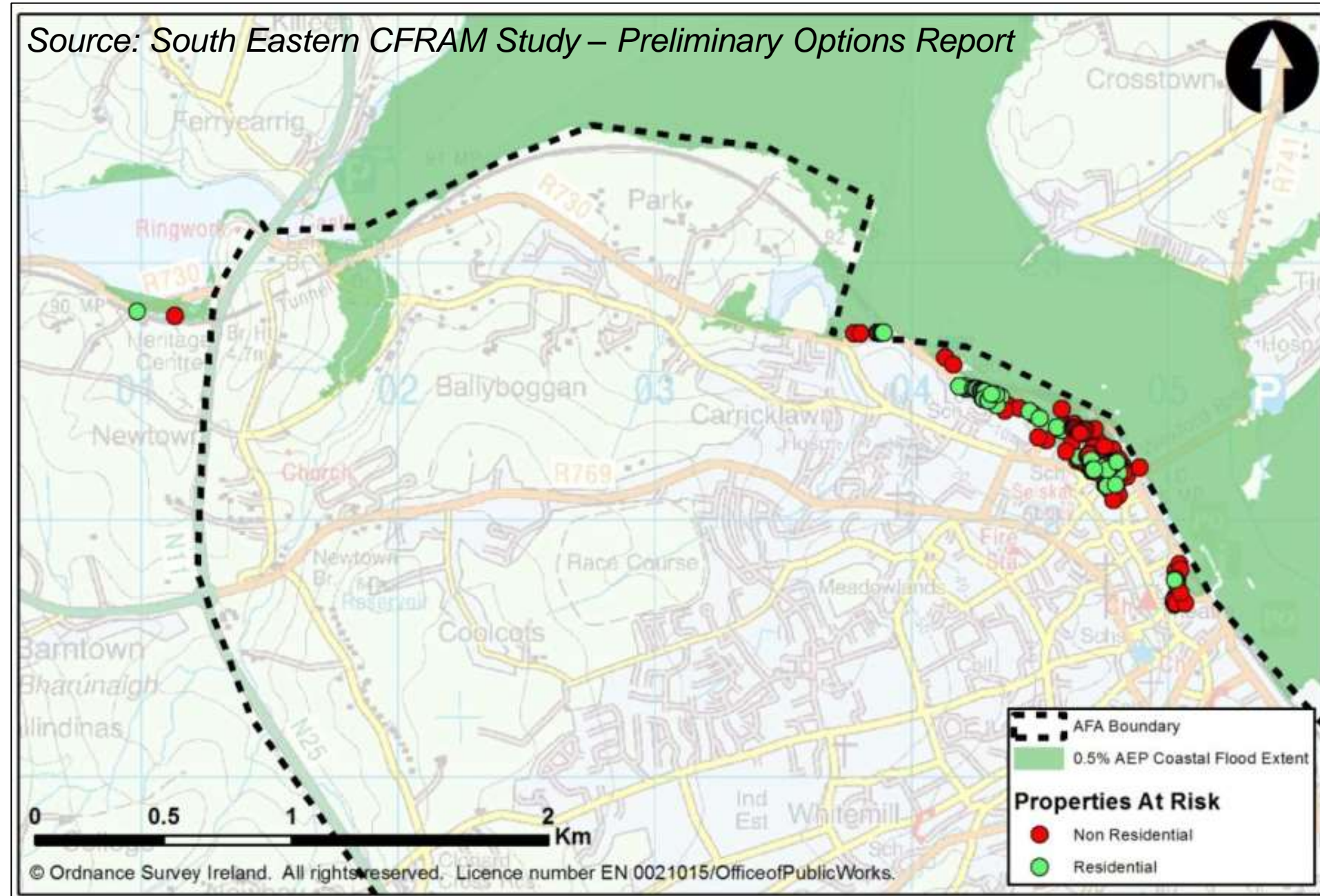
CFRAM maps have been produced for the communities at potential risk from fluvial (river) flooding. The maps show areas predicted to be inundated during a 'design' flood event with an estimated probability of occurrence. They indicate the estimated extents, peak water levels and flows associated with flooding from only those river reaches that have been modelled, indicated on the flood maps with a thick orange line. Flooding from unmodelled minor streams may also occur but was not mapped in the CFRAM study.



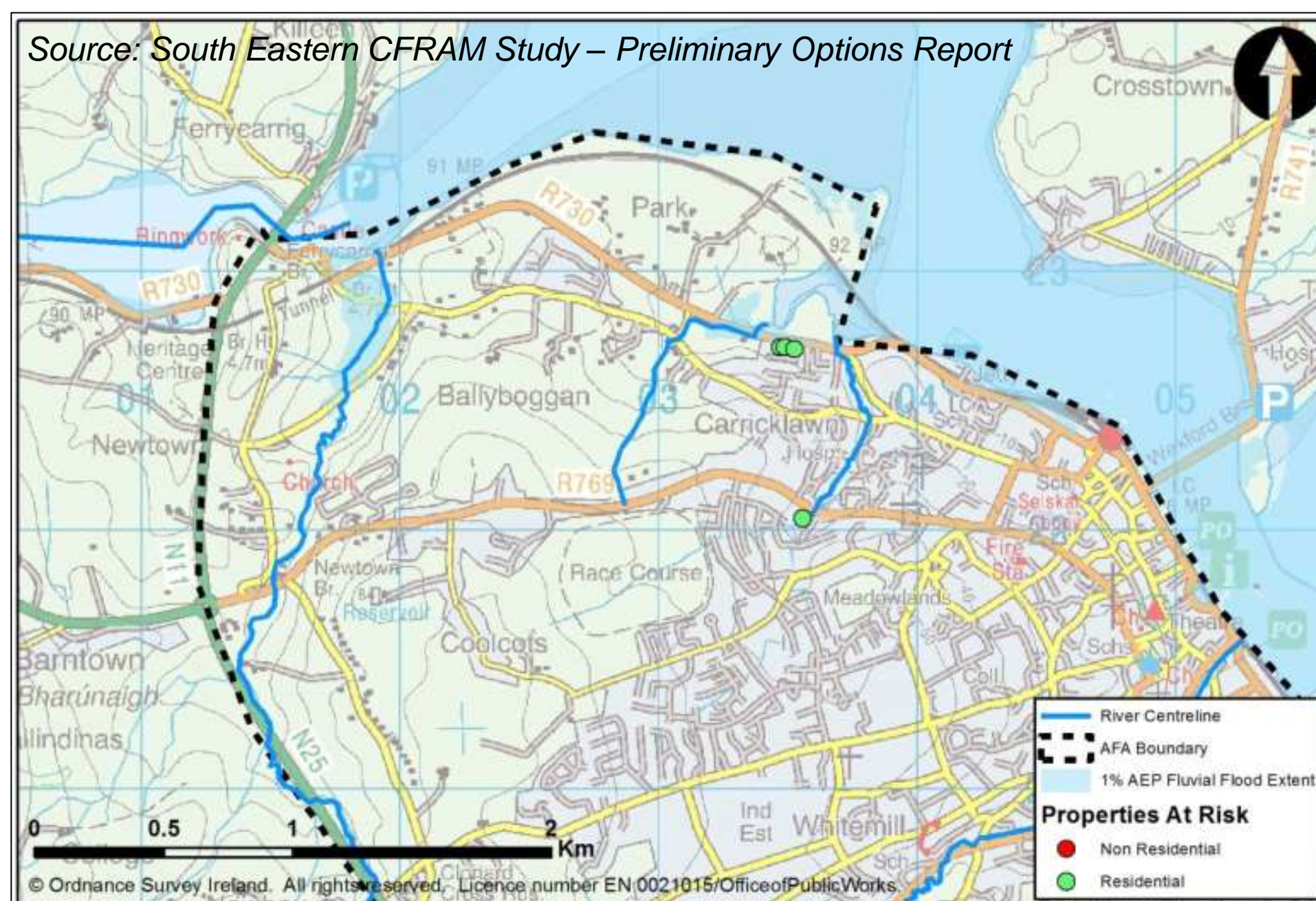
CFRAM Options Review

CFRAM FLOOD RISK

The CFRAM study identified that the main flood risk in Wexford is from a coastal event, with few discrete areas at risk of fluvial (river) flooding.

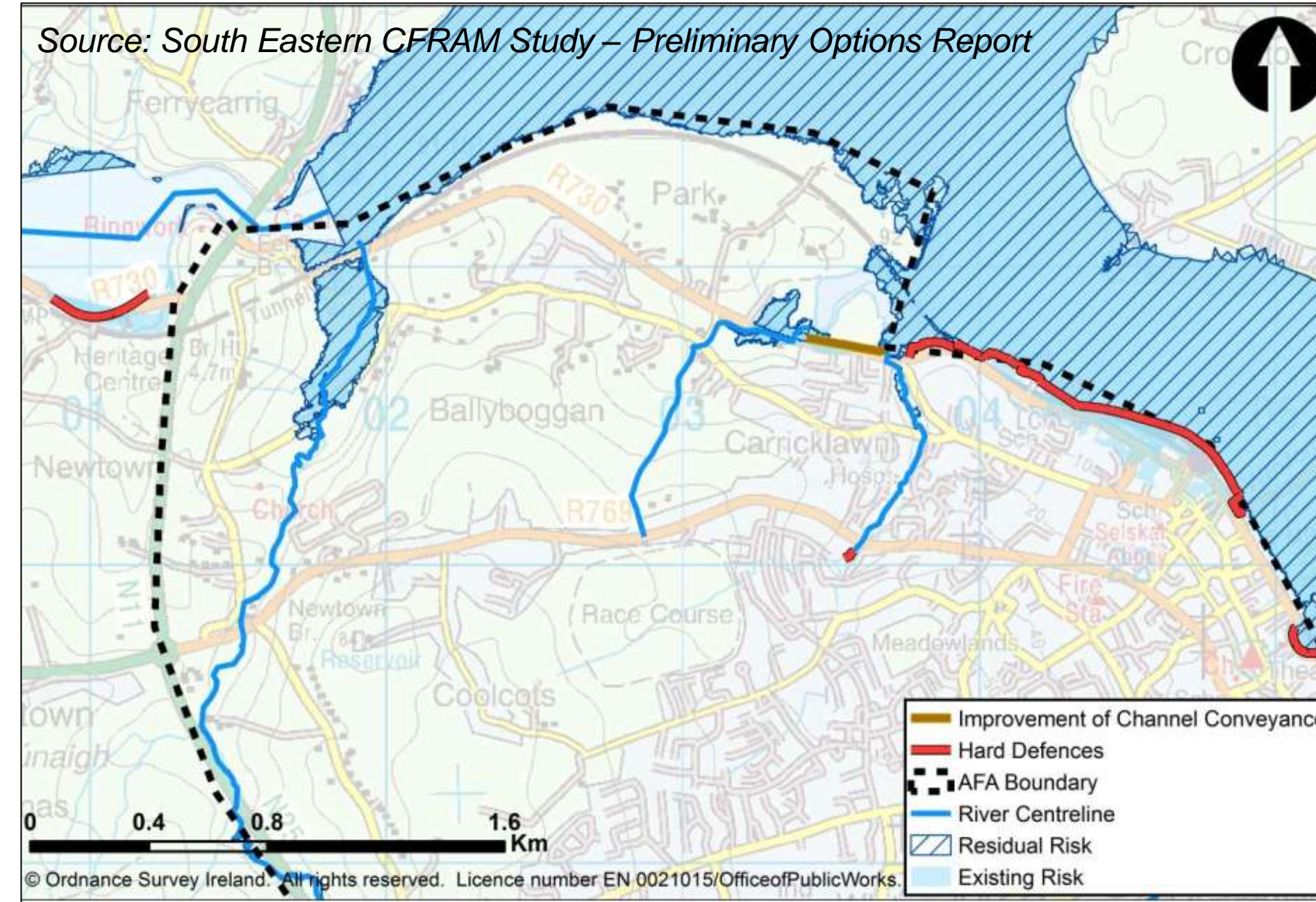


Properties at risk within a 0.5% AEP Coastal Flood Extent



Properties at risk within a 1% AEP Fluvial Flood Extent

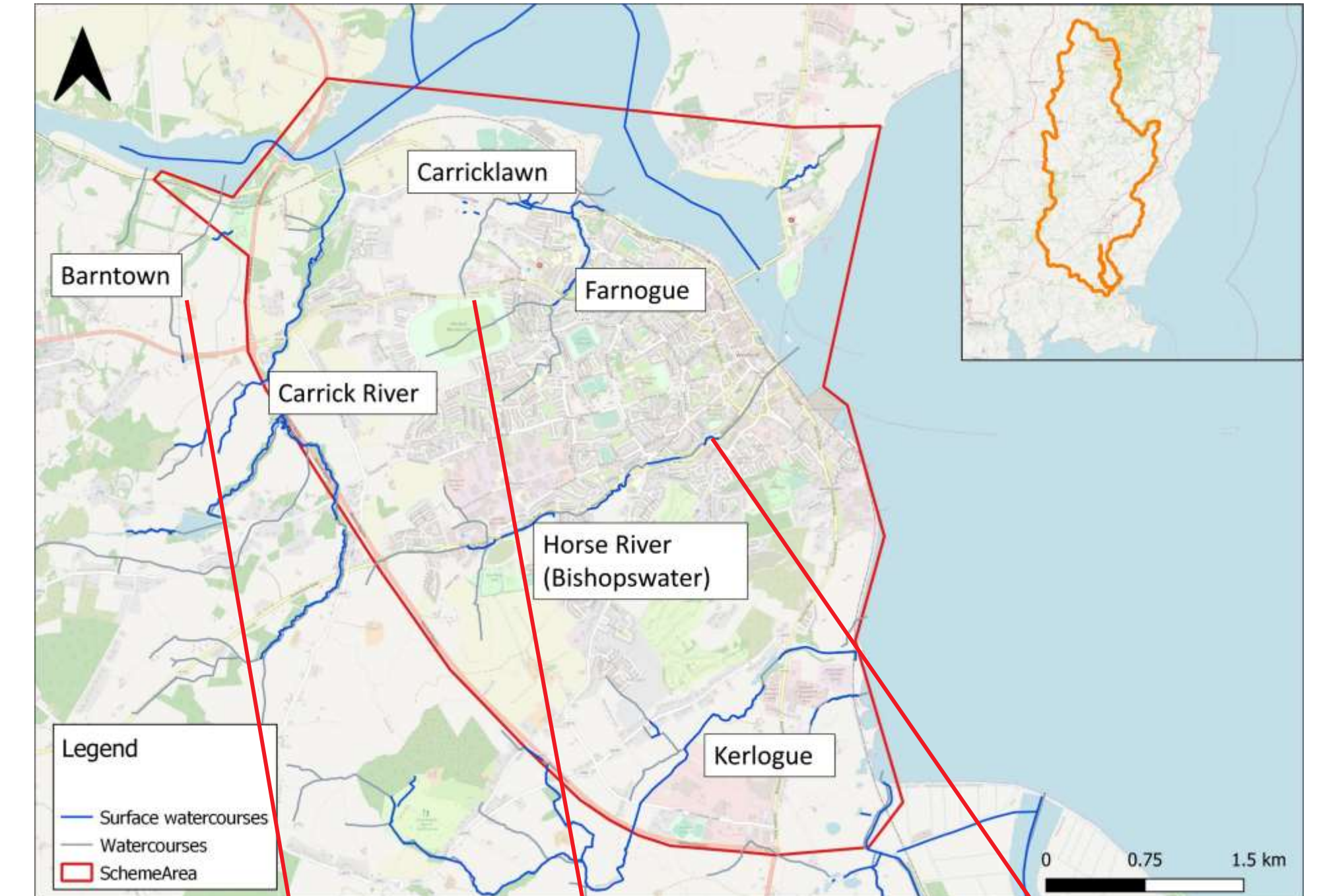
CFRAM FLOOD PROTECTION OPTION



The CFRAM study has proposed a preferred Flood Protection Option consisting of building hard defences and improvement of channel conveyance. At risk properties would be protected by a series of flood embankments and walls, along with improvement of channel conveyance close to the downstream end of the Carricklawn River.

This option will be included in the optioneering process together with other viable options that may result from our analysis.

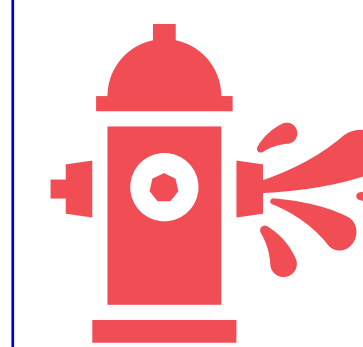
GAPS



Barntown stream was not modelled, but flooding from surface water beside the National Heritage Park has happened in the past

Carricklawn stream was only partially modelled because WCC was carrying out works along the river

No measures were proposed for the Horse River



There are many other possible sources of flooding, such as from surcharged urban drainage systems, ponding rainwater or blockage of structures such as culverts. Flooding from these other sources has not been mapped in the CFRAM Study, so areas that are not shown as being within a flood extent may therefore be at risk from flooding from one or more of these other sources.

Your Feedback



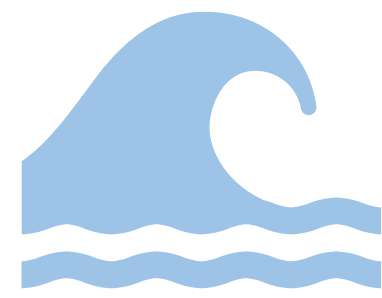
Your Voice Matters:

We seek your initial thoughts on key flood and wave overtopping issues in the area.



Local Insights Wanted:

Share any crucial constraints for the design and sustainability of any measures proposed.



Share your experience:

Tell us about any flood events across the scheme environs. Photos or videos of past events are appreciated.



YOUR NEXT OPPORTUNITY TO TAKE PART

- A second PCD will take place in 2025, Q2 (April – June) once a draft Scheme has been developed to engage public opinion, and to identify key issue and constraints.
- A third PCD will be held in 2025, Q3 (July – September) once a preferred Scheme has been identified and agreed with the Steering Group to close out the stakeholder participation events for Stage I of the Project.

CONTACT US

Please have your say – speak to the project representatives today and fill a consultation questionnaire to ensure your views are known.

You can keep in touch with the project through our website where we will be posting progress updates.

For further enquiries feel free to contact us via email or post at:



Wexford Town Flood Relief Scheme
Nicholas O'Dwyer Ltd. Unit 4E Nutgrove Office Park,
Nutgrove Avenue, Dublin D14 V3F6



WexfordTownFRS@nodwyer.com



www.floodinfo.ie/wexfordfrs



Wexford Town & Environs Flood Relief Scheme



OPW Oifig na nOibreacha Poiblí
Office of Public Works

