

Douglas Flood Relief Scheme (Including Togher Culvert)

Public Information Day No. 2

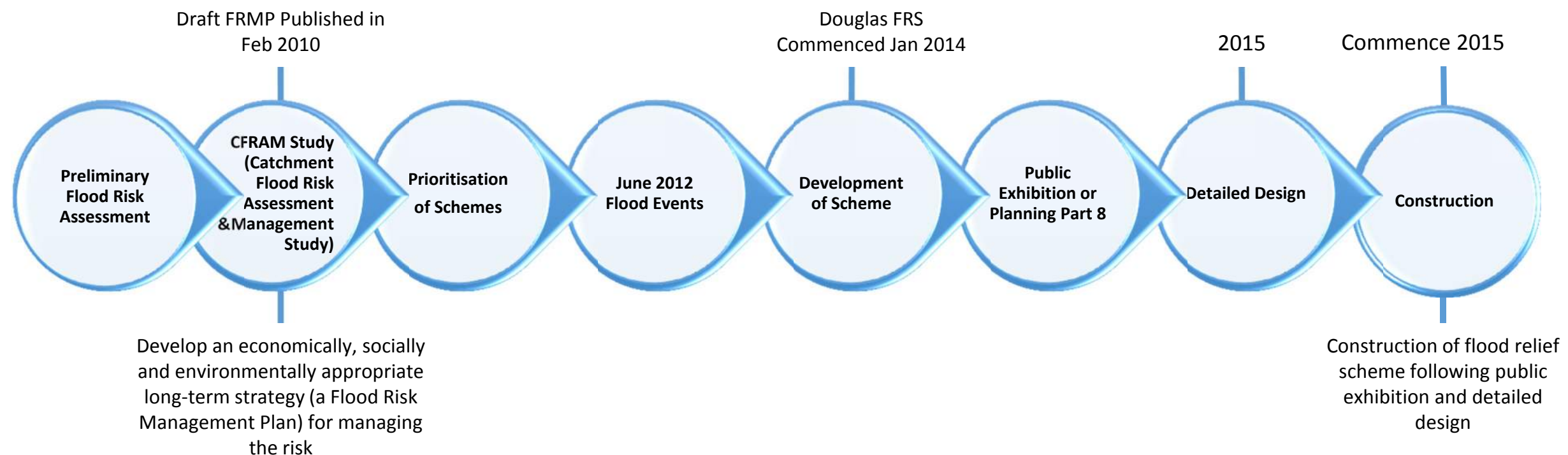


Scheme Objectives and Overview

The Office of Public Works (OPW) have carried out a Catchment Flood Risk Assessment and Management (CFRAM) Study for the Lee Catchment. From this study, the Draft Flood Risk Management Plan, published in February 2010, recommended a new culvert in Togher. It did not recommend flood relief measures for the Douglas area. However, Douglas Village was subsequently badly affected by flooding in June 2012.

Cork County Council/OPW has now commissioned an Engineering and Environmental Study to assess and develop a viable, cost-effective and sustainable Flood Relief Scheme for the Douglas area, and to also include the recommended new culvert in Togher. A report will be prepared describing the findings of the Engineering Study, which will include a description of the measures and scheme options assessed and the justification for its selection.

The Project Team includes a Design Team made up of Arup (consulting engineers), Cork County Council and the OPW. The process of identifying the preferred scheme includes a detailed assessment of a range of flood risk management measures to determine their technical, economic, social and environmental viability.



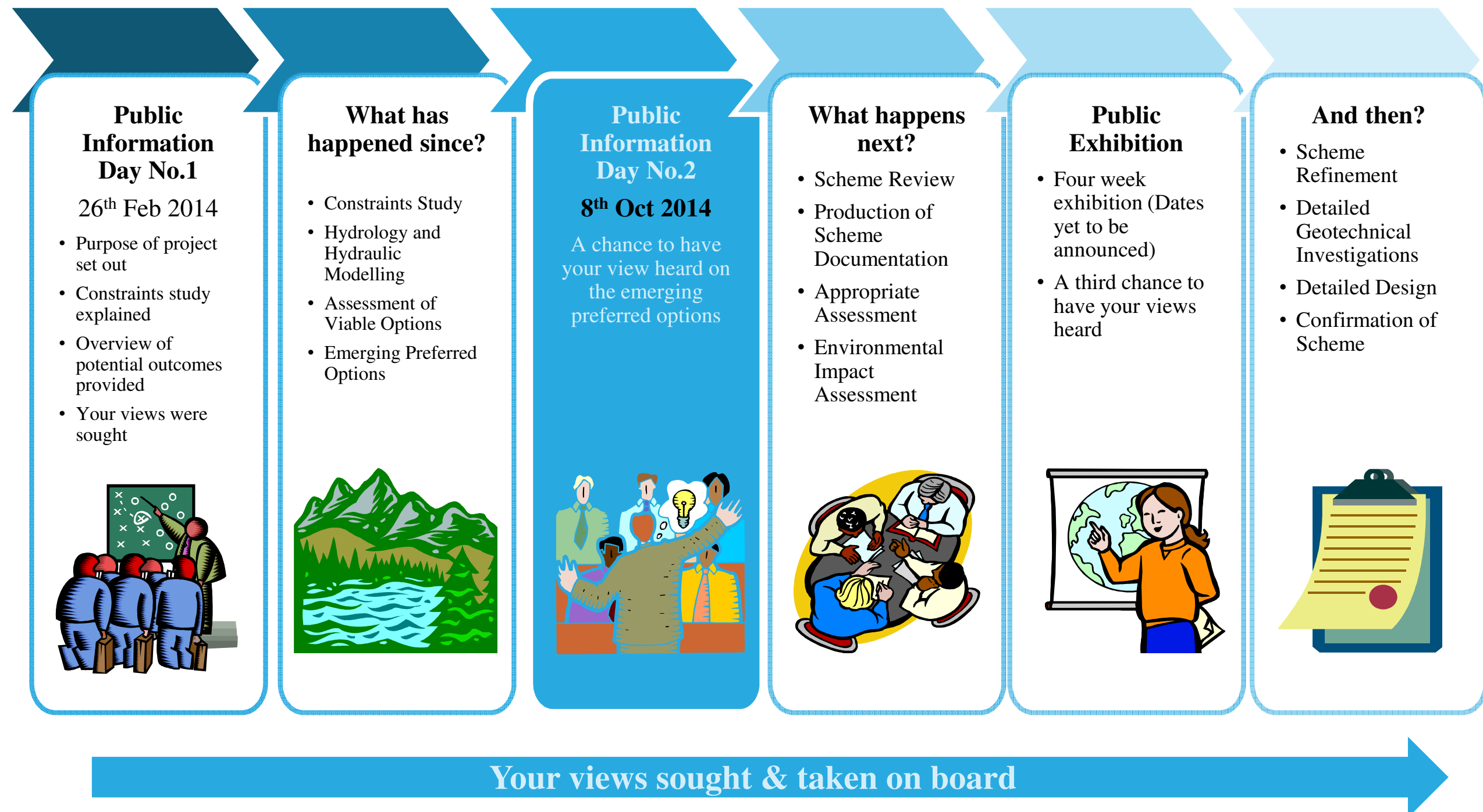
Douglas Flood Relief Scheme (Including Togher Culvert)

Public Information Day No. 2



ARUP

Public Consultation Process



Douglas Flood Relief Scheme (Including Togher Culvert)

Public Information Day No. 2



ARUP

Constraints Study

- The Constraints Study for the Douglas Flood Relief Scheme (including Togher culvert) was completed following the initial public consultation, taking your views into account.
- The purpose of the Constraints Study is to identify the key environmental issues relating to the Scheme Study Area which may be impacted upon by possible flood alleviation measures and/or which may impose constraints on the viability and/or design of these measures.
- Constraints have been documented under the following headings: Human Beings, Ecology, Water, Soils & Geology, Archaeology, Architectural and Cultural Heritage, Landscape, Noise, Air Quality, Climate and Material Assets.
- The key constraints identified include the requirement to minimise disruption to vehicular, cycle and pedestrian traffic and properties and business adjacent to the watercourses and to minimise impacts on sensitive receptors and public amenity areas. Ecological constraints to consider include minimising impacts on designated conservation sites, riparian and terrestrial habitats, fish movement, birds and mammal species. Other constraints include the protection of archaeological, architectural and cultural heritage sites and water quality in the study area.
- A copy of the completed Constraints Study Report is available to download from the project website www.douglasfrs.ie



Douglas Flood Relief Scheme (Including Togher Culvert)

Public Information Day No. 2



ARUP

Ballybrack Stream at Church Road



Existing View



Photomontage of Proposed Scheme

Douglas Flood Relief Scheme (Including Togher Culvert)

Public Information Day No. 2



ARUP

Tramore River at Douglas Mills



Existing View



Photomontage of Proposed Scheme