

**BALLYBOFEY-STRANORLAR**  
FLOOD RELIEF SCHEME



**Comhairle Contae**  
**Dhún na nGall**  
Donegal County Council



Tionscadal Éireann  
Project Ireland  
**2040**

**OPW** Oifig na  
nOibreacha Poiblí  
Office of Public Works

## Ballybofey-Stranorlar Flood Relief Scheme



## Newsletter March 2022

### IN THIS ISSUE

## Latest Overview

This is the third newsletter for the Ballybofey-Stranorlar Flood Relief Scheme. The main activities carried out since the previous newsletter in December 2021 include survey works, environmental activities, hydraulic modelling, and hydrological assessment.

Survey Works

Page 2

Environmental Activities

Page 3

Hydrology & Hydraulics

Page 4

What's Next?

Page 5

# Survey Works & Site Investigations

The condition survey of the existing culverts in the town has been completed. The survey data is currently being reviewed before input to the hydraulic model.

LiDAR survey is used to capture large areas of topography from the sky and is key for developing an accurate hydraulic model. The LiDAR survey was completed in March 2022. The survey data is currently being processed by the Contractor and is expected to be issued in April.

Drone survey was also flown in select locations to provide supplementary topographical data for Ballybofey-Stranorlar.

Tender documents for site investigation works at the embankment of the River Finn at Ballybofey are being finalised. This investigation will provide us with technical information on the condition and make-up of the embankments and will inform overall Scheme development.



*An image of the existing embankment at Ballybofey which will undergo further investigation work to determine its condition*

# Environmental Activities

## Environmental Constraints

The updated environmental constraints report for Ballybofey-Stranorlar was issued to Donegal County Council in February 2022 following feedback from the steering group. The purpose of this report is to identify the key environmental issues associated with the development of a scheme within the Ballybofey-Stranorlar catchment. The final report will be available on the project website soon.

## Invasive Species Management & Treatment

Based on our invasive species surveys, an Invasive Species Management Plan (ISMP) was finalised in February 2022 following feedback from Donegal County Council. We are now in the process of procuring a contractor to undertake treatment in accordance with our ISMP. The treatment of invasive species has been prioritised to minimise risk to the progression of the scheme.

## Appropriate Assessment of Site Investigation Works at the Finn Embankments

The project team are proceeding with Stage 1 screening for Appropriate Assessment and where necessary Stage 2 Appropriate Assessment for the upcoming Site Investigation works along the Finn embankments. This statutory process will ensure that all necessary ecological mitigations to prevent impact to the River Finn Special Area of Conservation are met during and after any works taking place.

## Specialist Surveys

The project team, in coordination with Donegal County Council have progressed with the procurement of third-party environmental specialists. The surveys relate the following specialist areas:

- Air quality
- Aquatic Ecology
- Landscape and Visual
- Wintering Birds
- Noise & Vibration
- Archaeology and Cultural Heritage



*Japanese Knotweed (left) and Himalayan Balsam (above) are both found along the banks of the River Finn in Ballybofey-Stranorlar.*

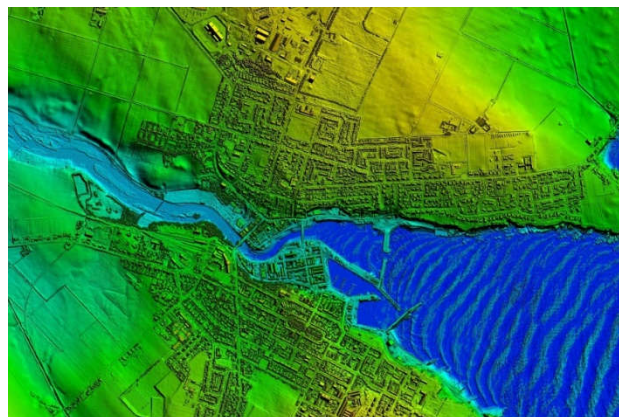


## Hydrological Analysis & Hydraulic Modelling

The draft hydrology report for Ballybofey and Stranorlar was issued to the project Steering Group for review in March 2022. As part of the assessment, rainfall analysis has been undertaken to inform the modelling of overland surface water flows resulting from intense rainfall events.

The development of the hydraulic model is ongoing. The topographical data has been input into the model with the 1d model build nearing completion. The culvert condition survey data is undergoing review before input to the model.

LiDAR survey has now been completed. This data will allow the project team to finalise the 2D hydraulic model build.



## What's Next?

Over the next few months, the Project Team will be working on:

- ➔ Site Investigation of the Finn embankments and condition assessment
- ➔ Appointment of Environmental Specialists.
- ➔ Implementation of our Invasive Species Management Plan for 2022
- ➔ Continuation of Hydraulic Modelling including 2D LiDAR survey data.
- ➔ Assessment of Potential of Natural Water Retention Measures



## Contact Us

If you would like to contact our Project Team about any matter relating to the Ballybofey-Stranorlar Flood Relief Scheme you can do so through the following:

### Email

[Ballybofey-StranorlarFRS@ByrneLooby.com](mailto:Ballybofey-StranorlarFRS@ByrneLooby.com)

### Post

Project Manager Ballybofey-Stranorlar FRS  
ByrneLooby  
Building 2100  
Cork Airport Business Park  
Kinsale Road  
Cork

### Phone

+353 (0) 21 240 7988

If you would like any further information on the Scheme including programme, please visit our website:

[www.floodinfo.ie/frs/en/ballybofey-stranorlar/home/](http://www.floodinfo.ie/frs/en/ballybofey-stranorlar/home/)