

Cork County Council
Midleton Flood Relief Scheme
Public Participation Day No.3
Summary Report

REP/1

Issue | 30 September 2022

This report takes into account the particular instructions and requirements of our client.

It is not intended for and should not be relied upon by any third party and no responsibility is undertaken to any third party.

Job number **252803-00**

Ove Arup & Partners Ireland Ltd

Arup
50 Ringsend Road
DublinCork
Ireland
www.arup.com

ARUP

Document Verification

ARUP

Job title		Midleton (River Owenacurra & River Dungourney) Flood Relief Scheme		Job number		252803-00	
Document title		Public Participation Day No.3 Summary Report		File reference			
Document ref		REP/1					
Revision	Date	Filename	Midleton FRS PPD3 Report Issue.docx				
Issue 1	30/9/2022	Description	Issue 1				
			Prepared by	Checked by	Approved by		
		Name	Daniel Sheahan	Bairbre O'Breasail	Bairbre O'Breasail		
		Signature					
		Filename					
		Description					
			Prepared by	Checked by	Approved by		
		Name					
		Signature					
		Filename					
		Description					
			Prepared by	Checked by	Approved by		
		Name					
		Signature					
		Filename					
		Description					
			Prepared by	Checked by	Approved by		
		Name					
		Signature					

Issue Document Verification with Document
☒

Contents

	Page
1 Introduction	1
2 Public Participation Day Arrangements	1
2.1 Public Participation Day– Presentation of Emerging Preferred Options	1
2.2 Presentation to Councillors	2
2.3 Advertising of the Public Participation Day	2
2.4 Landowner Letter Drop	4
3 Public Participation Day Materials	5
3.1 PPD3 Information Leaflet	5
3.2 PPD3 Questionnaire	5
3.3 PPD3 Posters	5
3.4 PPD3 Props	6
3.5 Project Website	6
4 Public Participation Day Outcome	7
4.1 Number of Attendees	7
4.2 Public Response	7
4.3 Analysis of Questionnaires	8
4.4 Evaluation of Non-Questionnaire Responses	12
4.5 Actions following PPD	15

Appendices

Appendix A

PPD 3 Materials

1 Introduction

The OPW has carried out a Catchment Flood Risk Assessment and Management (CFRAM) Study for the Lee Catchment, which includes the Owenacurra and Dungourney River catchments, as well as tidal flood risk.

Cork County Council (CCC) has recognised that groundwater and pluvial flooding are also very significant sources of flood risk in Midleton. A robust flood scheme for the town needs to address these flood sources. The scheme is therefore to be developed to defend properties at risk from all four sources of flooding.

CCC, acting as Agents for the Office of Public Works (OPW), has commissioned Arup to develop a Flood Relief Scheme for Midleton.

This report provides details and analysis of the Public Participation Day (PPD) held on the 28th July 2022. This was the third public participation day for the project. The aim was to inform the public and stakeholders of the emerging preferred option to alleviate flooding in the Midleton Area. The constraints for each area were also presented, as were landscape architect plans for Baby Walk.

2 Public Participation Day Arrangements

2.1 Public Participation Day– Presentation of Emerging Preferred Options

A PPD was held on the 28th July 2022 in the Midleton Park Hotel. It was held on a Thursday from 2pm – 8pm, as it was considered that this would allow an increased number of people to attend outside of regular working hours.

The purpose of the PPD was to present the emerging preferred option for each area and to seek feedback from the public. The objectives of the Public Participation Day were to:

- Provide an update on progress to date
- Present the emerging preferred option in each area
- Present the findings of the Natural Flood Management Feasibility Study
- Present the findings of the Scheme Climate Change Adaptation Plan
- Obtain other information relevant to the Scheme
- Present the identified constraints in the areas
- Outline the next steps of the Scheme

The PPD was attended and staffed by members of Arup's engineering and environmental teams, representatives of the OPW, CCC and Cunnane Stratton Reynolds. Scheme representatives were available to answer questions from the

members of the public who attended, to explain the options presented, and to accept feedback and information from the attendees.

2.2 Presentation to Councillors

A presentation was made to elected representatives prior to the PPD consultation on the 28th July 2022 at the Midleton Park Hotel, immediately prior to the event opening to the general public.

2.3 Advertising of the Public Participation Day

The project team prepared a publicity brochure, posters, and letters to stakeholders, newspaper and radio advertisements.

Advertising of the PPD was undertaken in the local printed press and on local radio stations in the week preceding the event, as follows.

Advertisements in Local Press:

- Irish Examiner Advert in the Examiner – 26/07/2022
- 2 no adverts in the East Cork News & Advertiser (13/07/2022 and 27/07/2022) – fortnightly local publication

Radio adverts running the week before the event:

- 96 FM
- C103

Information posters were located throughout the town and in key locations, such as commuter points, as shown in Figure 1 below. In addition, posters were displayed on railway carriage "arrow cards" along the Cork Cobh Line.

Figure 1: PPD Information Poster



Invitations were sent to stakeholders and individuals who attended previous consultation days via email.

The event was also publicised through the project website, the CCC website, Irish Examiner website, OPW social media and CCC social media platforms, i.e. CCC Facebook, Twitter and Instagram – including a ‘boosted’ Facebook post which targeted people within 25km of Midleton.

A number of articles written by various local and national news websites;

- <https://www.irishexaminer.com/> on 07-07-2022
- <https://www.echolive.ie/> on 11-07-2022
- <https://www.thecork.ie/> on 17-07-2022
- <https://www.96fm.ie/> on 11-07-2022
- <https://redfm.ie/> on 09-07-2022

In addition, approx. 8,900 information leaflets were delivered using An Post delivery service to local residents in Midleton. Additional leaflets were made available at the CCC local area office and libraries in both Cobh and Midleton.

2.4 Landowner Letter Drop

A number of landowners, approx. 250, who may not have been aware that they could be impacted by the emerging preferred option, were contacted by letter prior to the PPD, inviting them to the PPD and directing to them to the website for further information.

3 Public Participation Day Materials

3.1 PPD3 Information Leaflet

A PPD Information Leaflet was produced for the scheme. This information leaflet outlined the PPD details, the level of protection the scheme will defend to, the number of properties defended and the estimated cost of the scheme. It included a map showing the present-day flood extent of Midleton Town Centre and gave details of the next steps for the scheme. A copy of the information leaflet is attached in **Appendix A**.

3.2 PPD3 Questionnaire

A questionnaire with pre-printed questions was provided to each attendee, in addition to the information leaflet. It provided an opportunity for members of the public to express their views on the emerging preferred options presented at the PPD, in addition to other comments they may have had relating the scheme.

A digital version of the questionnaire was created on the project website, so that additional feedback could be received by members of the public who were unable to attend the event in person. A copy of the blank questionnaire is attached in **Appendix A**.

The return date for receipt of completed questionnaires was the 29th August 2022. Information in addition to the questionnaires was also accepted on the day of the event or subsequently by post/ email.

3.3 PPD3 Posters

The following posters were exhibited at the PPD:

- Scheme Objectives and Overview
- Public consultation process
- Current Flood Extents
- Area 1&2 Constraints
- Area 1&2 Emerging Preferred Option
- Area 3 (North) Constraints
- Area 3 (North) Emerging Preferred Option
- Area (South) Constraints
- Area 3 (South) Emerging Preferred Option
- Area 4 Constraints
- Area 4 Emerging Preferred Option

- Area 5 Constraints
- Area 5 Emerging Preferred Option
- Area 6 Upstream of Water Rock Cave System / Underground Watercourse
- Ongoing and Potential Future Projects
- Natural Flood management Feasibility Study for Midleton
- Scheme Climate Change Adaptation Plan
- Indicative Materials and Character
- Baby's Walk Emerging Preferred Option

Copies of the posters are included in **Appendix A**.

3.4 PPD3 Props

A life size prop was displayed demonstrating the likely maximum flood defence height, this was used to illustrate the defence height relative to attendees and the possible finishes that could be applied to a flood defence.

3.5 Project Website

The dedicated website was updated prior to the PPD. The website address www.midletonfrs.ie was publicised at the PPD, and attendees were informed that all information on display at the public exhibition, including information brochures, posters, questionnaires etc., would be available for download from the website.

It is intended to keep the website live for the duration of the scheme and for it to become a destination for interested members of the public to get project information and news and where project documentation can be made available for download.

4 Public Participation Day Outcome

4.1 Number of Attendees

Members of the public visiting the exhibition were invited to sign a visitors' list to enable a record of the number of attendees to be maintained. Approximately 115 attendees signed the attendance list at the event in the Midleton Park Hotel. However, the total attendance was estimated to be approximately 150 taking into account the people who did not sign in, the people who came in pairs or groups but only signed in as one, and also includes the councillors who attended in the morning.

4.2 Public Response

It was considered that visitors to the PPD had, in the main, a good understanding of the proposals as presented at the exhibition. Feedback was generally positive. Most of those that attended had a particular interest in properties or lands in the study area and outlined the extent to which their properties had been affected by previous flood events.

There were a number of common topics the public raised as outlined below. Clarifications were also sought on the proposed options at particular locations across the study area. Most of these were reflected in the questionnaires and other submissions.

4.2.1 Common topics raised at the PPD

The occurring topics of public interest discussed with project representatives during the PPD are summarised below:

- Programme and construction start date
- Decision to remove Water Rock area from the scheme
- Confirmation of funding
- Climate change / Scheme adaptability
- Potential removal of trees
- Flood insurance queries
- Privacy concerns of residents where embankments are to be raised
- Opposition to realignment of watercourse at Kearney's Cross in Ballinacurra

A "Frequently Asked Questions" section is available on the projects website which provides answers to some of these questions.

4.2.2 Returned Questionnaires

By the 29th August 2022, a total of 29 questionnaires were returned. Additional comments were noted on the day, and numerous emails were also received during the response period. The issues raised are outlined in Section 4.4.

4.3 Analysis of Questionnaires

A total of 29 completed questionnaires were received. 13 of these were physical paper questionnaires completed at the PPD event or posted after, with the remaining 16 comprising of the online version from the project website.

Outlined below is a summary of the information provided in the questionnaires.

4.3.1 Question 1 (Previous attendance)

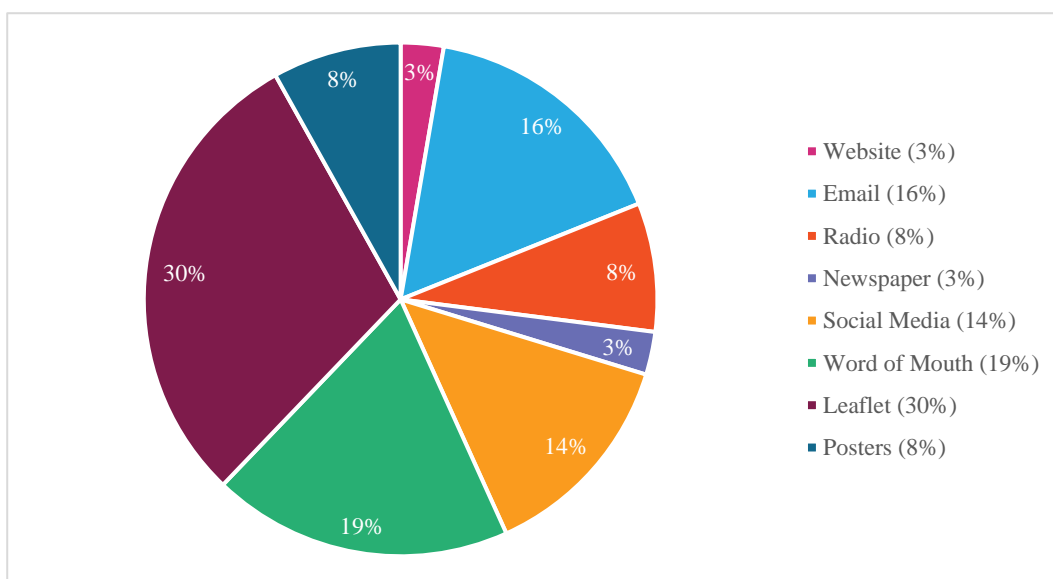
When asked “Did you attend the first Public Participation Day held on 27th March 2017?” 37.9% of indicated they had while 58.6% of individuals indicated they had not. A further 3.4% left the question unanswered.

4.3.2 Question 2 (Previous attendance)

When asked “Did you attend the second Public Participation Day held on 7th March 2020?” 51.7% of indicated they had while 48.3% of individuals indicated they had not.

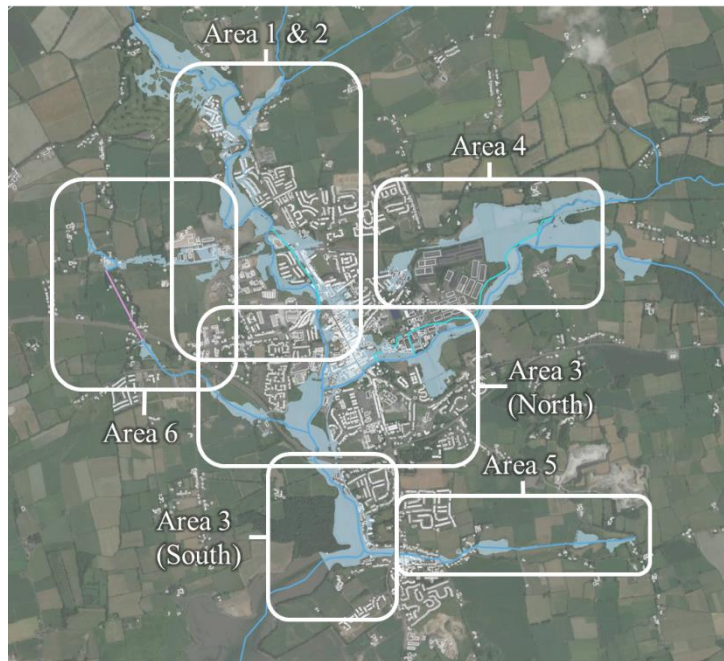
4.3.3 Question 3 (PPD advertisement)

The breakdown of the responses to Question 3: “How did you hear about today’s Public Participation Day?” are detailed below;

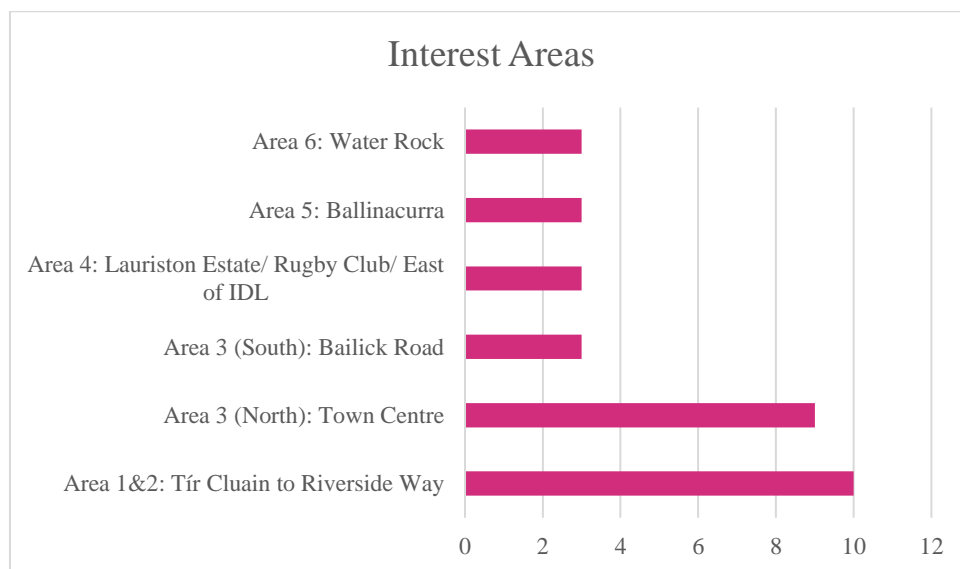


4.3.4 Question 4 (Areas of interest)

In order to assess the geographical areas in which people were most interested in, attendees were asked “*What part of the study area have you a particular interest in?*”. This question was aided with a map to indicate the extent of the areas.



A number of responses indicated an interest in more than one area of the scheme. Analysis of this questions resulted in the below findings;



4.3.5 Question 5 (Personal experience)

In order to develop a greater understanding of public sentiment in areas across the scheme, attendees were asked “*Have you any personal experience of flooding in this area?*”, following on their response from question four. This helped create a better understanding of their experience for the project team, while also increasing

the likelihood that comments received that included previous flooding information was from a primary source. 76% of people indicated that they had personal experience with flooding in their area of interest, compared to 24% who did not or who did not respond.

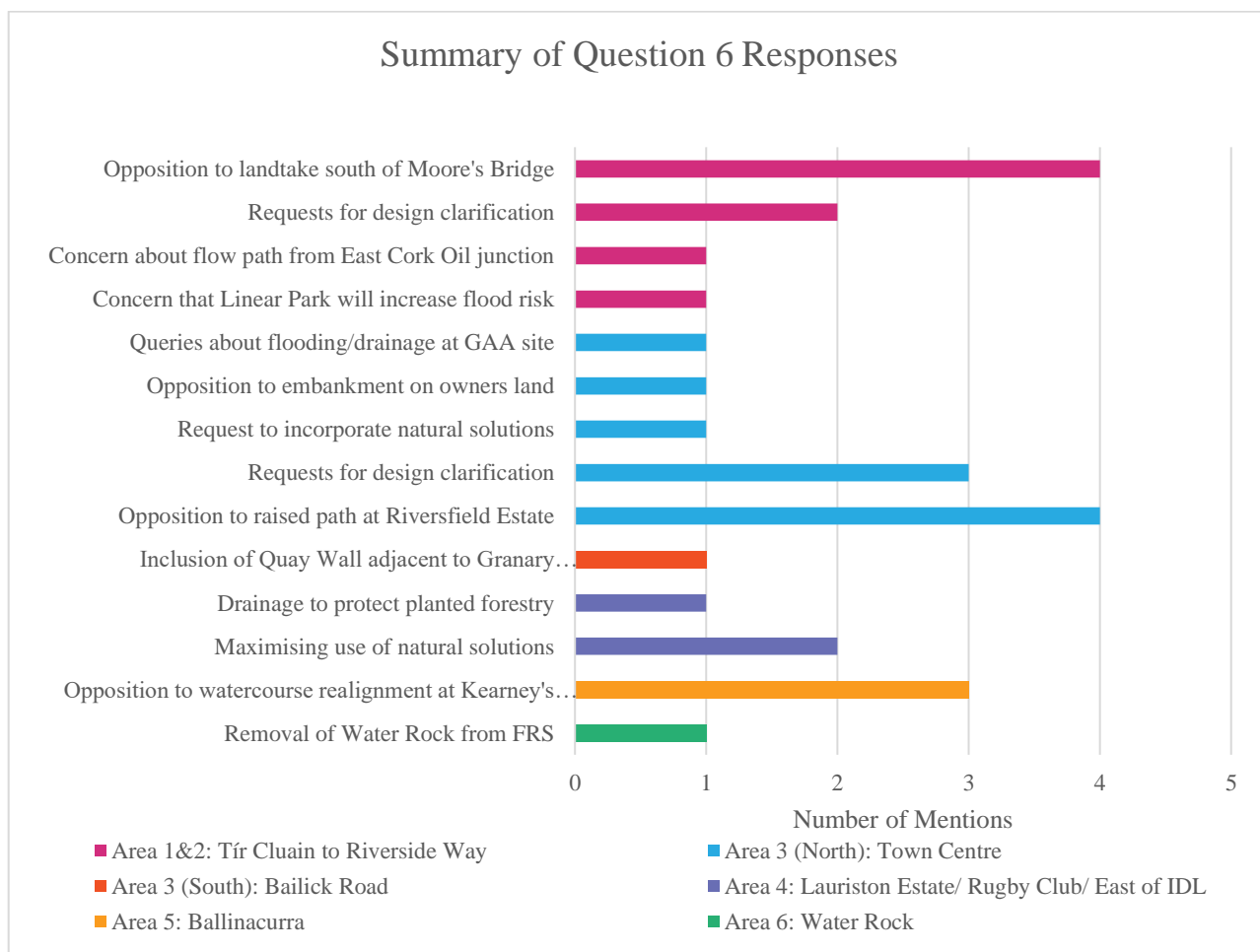
4.3.6 Question 6 (Comments on emerging preferred option in area of interest)

The purpose of question six was to capture public sentiment surrounding the emerging preferred option for their areas of interest. The responses to this question will be used to inform potential modifications to the emerging preferred option if possible.

It is noted that;

- Some responses indicated a preference to several of the options presented
- Some indicated a preference to options in areas they did not state they had an interest in (Question 4)

A breakdown of the responses are detailed below.



4.3.7 Question 7 (Additional constraints)

This question asked attendees *“Having reviewed the identified constraints in the study area you have a particular interest in, would you like to add anything?”*. The purpose of this question was to identify any additional constraints, known through local knowledge, but which may have been missed previously in surveys or desk studies. Feedback from this question is outlined below, and the identified issues will be considered in the finalisation of the emerging preferred scheme.

- Flood plain adjacent to Willowbank has significant amenity value and should be maintained
- Concern that Linear Park will increase flood risk to adjacent areas
- Wants to keep right bank south of Moore's Bridge private
- Concern that bridge upstream (Moore's Bridge) causes the flooding
- Dredging works and raised river bank south of Moore's Bridge on right bank has been undertaken
- Opposition to land take south of Moore's Bridge on right bank
- Request for clarification on potential path along right bank south of Moore's Bridge
- Would like to see multi storey car park by Baby's Walk remain open 7 days a week
- Would like to see a pedestrian priority zone along Distillery Walk , car access for visitor centre and locals only
- Intention to develop old gasworks site, concerns about proposed embankment
- Would like quay wall at The Granary Development included
- Would like to see maintenance work at Kearney's Cross instead of watercourse realignment
- Concern for increase in flood risk arising from housing developments planned in Water Rock

4.3.8 Question 8 (Additional comments)

This question asked attendees to inform the project team of any additional comments they had. This was purposefully an open-ended question, designed to gather any additional comments in relation to the scheme that could not be covered in the other feedback responses. A breakdown of the additional comments received is as below:

- Additional submission from Riversfield Estate residents regarding their opposition to a raised pathway

- Additional statement from Willowbank residents referencing previous submission
- Specific design queries and comments

4.4 Evaluation of Non-Questionnaire Responses / Submissions

This section outlines the comments recorded by staff members on the day of the PPD event and the additional email correspondence and submissions received by the 29th August 2022 submission cut-off date.

4.4.1 Area 1&2: (Tír Cluain to Riverside Way)

This section summarises the feedback received for this area during the PPD event and the two additional email submissions that were received post PPD. Feedback received varied from general comments to useful information which will be considered in the finalisation of the emerging preferred scheme and throughout the planning and detailed design stages.

Most frequently raised comments/submissions/queries received:

- Opposition to Moore's Bridge right bank road realignment land take
- Request for further consultation regarding proposed FRS works in area
- Request that wall cladding would be natural stone finish
- Queries regarding scale of defences (length and height)
- Impact of recent works in area on flood risk to adjacent properties
- Query regarding location of pumping station at Clohessy's Yard
- Carrigogna Bridge watermain diversion requirement
- The Meadows existing embankment suitability
- Suitability of existing roads in Willowbank for construction vehicles
- Removal of access gate by Cork Road Bridge
- It was stated that some Willowbank residents have amended the existing embankment for personal use
- Query regarding overland flow mechanism behind Midleton ETNS
- Existing culvert in Tir Cluainn

4.4.2 Area 3 (North): (Town Centre)

This section summarises the feedback received for this area during the PPD event and the seven additional email submissions that were received post PPD. Six of these email submissions were from a collective group representing residents in Riversfield Estate. Feedback received varied from general comments to useful information which will be considered in the finalisation of the emerging preferred scheme and throughout the planning and detailed design stages.

Most frequently raised comments/submissions/queries received:

- Queries regarding scale of defences (length and height)
- Concern about closing entrance to Baby Walk near Mill Race outlet
- Disruption to businesses along Distillery Walk during construction works
- Concerns regarding flooding and drainage adjacent to and within GAA development site
- Query regarding IDL mill race flow control
- Opposition to raised path at Riversfield Estate (loss of privacy)
- Concerns regarding flooding of Wastewater Treatment Plant

4.4.3 Area 3 (South): Bailick Road

This section summarises the feedback received for this area during the PPD event and the three additional email submissions that were received post PPD. Calls for an inclusion of the quay wall behind The Granary was the most frequent topic in the submissions. Feedback received varied from general comments to useful information which will be considered in the finalisation of the emerging preferred scheme and throughout the planning and detailed design stages.

Most frequently raised comments/submissions/queries received:

- Inclusion of the quay wall behind The Granary
- Queries regarding scale of defences (length and height) and land take requirements
- Concern regarding loss of access to boat ramp
- Advance works on Bailick Rd to close up the gap in defences at the boat ramp

4.4.4 Area 4: (Lauriston Estate/ Rugby Club/ East of IDL)

This section summarises the feedback received for this area during the PPD event and the two additional email submissions that were received post PPD. Feedback received focused on drainage concerns and requests for additional protection to Lauriston Estate. Feedback received varied from general comments to useful information which will be considered in the finalisation of the emerging preferred scheme and throughout the planning and detailed design stages.

Most frequently raised comments/submissions/queries received:

- Concerns regarding drainage of newly constructed Greenway
- Request for back-up flood defence between rugby club and Lauriston estate
- Query regarding groundwater supply to IDL

4.4.5 Area 5: (Ballinacurra)

This section summarises the feedback received for this area during the PPD event and the two additional submissions that were received post PPD. One of these submissions was signed by 19 local residents and was focused on maintaining the watercourse flow as is at the water feature located at Kearney's Cross as this is of local cultural heritage value to the area. All feedback received will be considered in the finalisation of the emerging preferred scheme and throughout the planning and detailed design stages.

Most frequently raised comments/submissions/queries received:

- Opposition to realignment of watercourse at Kearney's Cross
- Queries regarding pumping station location downstream and required infrastructure under Co-op and Whitegate Rd
- Queries regarding drainage works downstream of Kearney's Cross
- Queries regarding maintenance of open channel area of Kearney's Cross

4.4.6 Area 6: (Water Rock)

A flood relief solution that achieves the target standard of protection and is cost beneficial was not deemed feasible in this area. Therefore, the flood relief culvert as proposed at PPD2 was not presented as part of the emerging preferred option. It is proposed that further investigation be undertaken in this area. The feedback received, at both the PPD and within submissions received post PPD, call for the inclusion of the area into the flood relief scheme.

Most frequently raised comments/submissions/queries received:

- Opposition to exclusion of Water Rock area
- Concerns regarding the impact of the proposed LIHAF development on the flood risk in the area
- Concerns regarding the impact of the proposed Irish Rail twin tracking project on the cave system and consequently on the flood risk in the area
- Suggestion that downstream conveyance improvements would mitigate flood risk upstream
- Suggestion that maintenance of Water Rock stream would mitigate flood risk
- Suggestion that drainage maintenance on Ballyvodock Rd continue at regular intervals
- Request for further consultation regarding potential flood mitigation works in area

4.5 Actions following PPD

The more specific queries from individual landowners are not included here for privacy reasons. However they are noted and will be responded to separately.

The following actions will be ongoing throughout the finalisation of the emerging preferred scheme and will continue as required in the planning and detailed design stages.

- Liaison with various landowners and stakeholder groups regarding their comments and concerns
- Responses to ongoing queries by email
- Consideration of location of pathway beside Riverside Way embankment, instead of on top of proposed flood embankment
- Consideration of realignment of watercourse at Kearney's Cross, by maintaining water flow on road side of existing wall
- Consideration of suitability of existing embankments with further topographical and geotechnical investigation
- Continuation of liaison with proposed interacting infrastructure projects
- Consultation with landowners at Water Rock regarding potential flood mitigation measures

Appendix A

PPD 3 Materials

A1 Information Leaflet

A copy of the PPD Information Leaflet is provided overleaf.



MIDLETON FLOOD RELIEF SCHEME

PUBLIC PARTICIPATION DAY

Thursday 28th July
Midleton Park Hotel
2.00pm-8.00pm

July 2022

Over the past number of months, work on the Midleton Flood Relief Scheme has progressed to narrow down the potential options for each area into one Emerging Preferred Option. This has been done with regard for the constraints of each area, the cost of the technically feasible options and your previous feedback.

In doing so, our ambition has been to present to you an option which:

- Protects homes and businesses to a high level
- Has a strong business case for implementation
- Minimises impacts on Midleton's environmental, social, visual, heritage and archaeological features
- Encompasses community wishes

We are hosting a third Public Participation Day on the **28th of July 2022**, where we will be presenting to you:

- The Emerging Preferred Options for each area
- The findings of the Natural Flood Management Feasibility Study
- The Scheme Climate Change Adaptation Plan

We will be publishing this information to www.midletonfrs.ie in advance of the Public Participation Day, so that you may have an opportunity to examine the Emerging Preferred Option for your area of interest before joining us. If you cannot make it on the day, we would encourage you to make your thoughts heard by submitting your feedback through the online questionnaire that will be live on the website later this month, or by emailing us at midletonfrs@arup.com.

Alternatively, you can write to: Bairbre O'Breasail, Project manager, Arup, One Albert Quay, Cork.

Midleton's flood events have fallen under four categories; flooding from rainfall (pluvial), flooding from rivers (fluvial), flooding from the sea (tidal) and flooding from underground water. Our team of engineers, hydraulic modellers, hydrologists, ecologists, project managers and architects have collaborated to provide solutions to these sources in a comprehensive manner.

The below infographic provides details of the levels of protection that our Emerging Preferred Options have been designed to provide.



With 580 properties potentially protected by the scheme, it also serves as a reminder of why work on this project is so important to the area.

A2 Questionnaire

A copy of the blank questionnaire is provided overleaf.

Midleton Flood Relief Scheme PUBLIC PARTICIPATION DAY NO.3 EMERGING PREFERRED OPTIONS QUESTIONNAIRE

(Please complete this questionnaire and return to Bairbre O'Breasail, Arup, One Albert Quay, Cork, T12 X8N6, or midletonfrs@arup.com by Monday 29th August 2022)

Questions:

1. Did you attend the first Public Participation Day held on 23rd March 2017? Yes ☐ No ☐

2. Did you attend the second Public Participation Day held on 7th March 2020? Yes ☐ No ☐

3. How did you hear about today's Public Participation Day? (Indicate all that are relevant)

- ☐ Project Website
- ☐ Email
- ☐ Radio
- ☐ Newspaper
- ☐ Social Media
- ☐ Word of Mouth
- ☐ Information Leaflet
- ☐ Information Posters

4. What parts of the study area have you a particular interest in (please indicate with X)? Select more than one area if applicable.

Area 1&2: Tír Cluain to Riverside Way ☐

Area 3 (North): Town Centre ☐

Area 3 (South): Bailick Road ☐

Area 4: Lauriston Estate/ Rugby Club/ East of IDL ☐

Area 5: Ballinacurra ☐

Area 6: Water Rock ☐



5. Have you any personal experience of flooding in this area?

Yes ☐ No ☐

6. Having reviewed the emerging preferred option in the study area you have a particular interest in, have you any comments you would like to share? We value your feedback.

7. Having reviewed the identified constraints in the study area you have a particular interest in, would you like to add anything?

Yes ☐ No ☐

If yes, please give details:

8. Please let us know if you have any other comments:

Name (optional): _____

Address (optional): _____

Email (optional): _____ **Phone (optional):** _____

I agree to Cork County Council using my contact details to inform me regarding this scheme.

Signed: _____

Privacy & Data Protection:

Personal information collected by Cork County Council is done so in order for us to engage with you in relation to the Midleton Flood Relief Scheme. Legally we can process this information as you have given your consent by signing this form. If you wish to remove your name from this list email midletonfrs@arup.com. The protection of your personal data is a key priority for the Council and your data will be processed in line with our Privacy policy which is available at <https://www.corkcoco.ie/privacy-statement-cork-county-council> or hardcopy from our offices at County Hall, Carrigrohane Road Cork, Ireland. Should you have any questions about our privacy policy or the information we hold about you please contact us by email to dpo@corkcoco.ie or write to us at Data Protection Officer, Cork County Council, County Hall, Carrigrohane Road Cork, Ireland.

THANK YOU FOR YOUR CO-OPERATION

A3 Posters

Links to the posters are provided below.

[Board No. 01- Scheme Objectives and Overview](#)

[Board No. 02- Public Consultation Process](#)

[Board No. 03- Scheme Area](#)

[Board No. 04- Area 1 & 2 Constraints](#)

[Board No. 05- Area 1 & 2 Emerging Preferred Option](#)

[Board No. 06- Area 3 \(North\) Constraints](#)

[Board No. 07- Area 3 \(North\) Emerging Preferred Option](#)

[Board No. 08- Area 3 \(South\) Constraints](#)

[Board No. 09- Area 3 \(South\) Emerging Preferred Option](#)

[Board No. 10- Area 4 Constraints](#)

[Board No. 11- Area 4 Emerging Preferred Option](#)

[Board No. 12- Area 5 Constraints](#)

[Board No. 13- Area 5 Emerging Preferred Option](#)

[Board No. 14- Area 6 Upstream of Water Rock Cave System/ Underground Watercourse](#)

[Board No. 15- Ongoing and Potential Future Projects](#)

[Board No. 16- Natural Flood Management Feasibility Study](#)

[Board No. 17- Scheme Climate Change Adaptation Plan](#)

[Board No. 18- Baby's Walk Emerging Preferred Option \(1 of 2\)](#)

[Board No. 19- Baby's Walk Emerging Preferred Option \(2 of 2\)](#)

[Board No. 20- Flood Defence: Indicative Materials and Character](#)

[Board No. 21- Baby's Walk: Enhancing Heritage and Placemaking](#)