

Contact Us

You can keep in touch with the project through our website where we will be posting updates on progress and details of ongoing works.

For further enquiries feel free to contact us via email or post at:

 **Portarlington Flood Relief Scheme Project Manager**

Binnies, Bluebell Business Centre,
Old Naas Road, Bluebell, Dublin 12
Co. Dublin, D12 NXF5, Ireland

 PortarlingtonFRS@binnies.com

 floodinfo.ie/portarlingtonfrs



Laois County Council
Áras an Chontae, Portlaoise, Co. Laois



OPW

Oifig na nOibreacha Poiblí
Office of Public Works



Tionscadal Éireann
Project Ireland
2040



Comhairle Chontae Uíbh Fhailí
Offaly County Council



How you can get involved

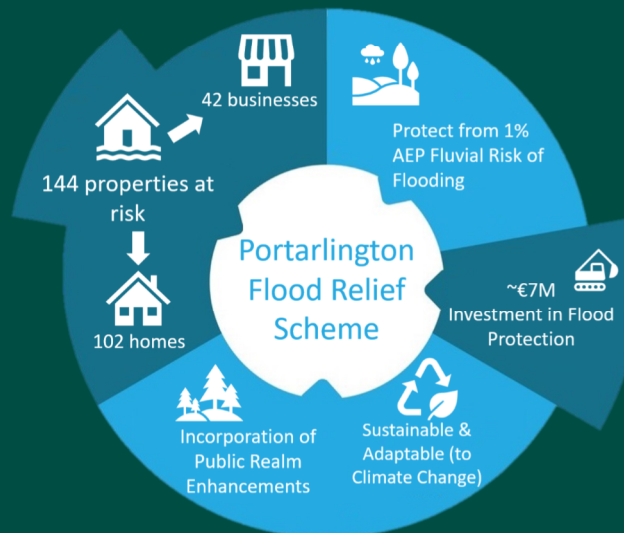
We want to consider all viewpoints in relation to the scheme, and this is your opportunity to take part at an early stage. Any time spent communicating your views is greatly appreciated.

- Please visit the project website to view our virtual public consultation presentation to meet the team and hear more about the project:

www.floodinfo.ie/portarlingtonfrs

- Questionnaire forms are available on our website and local council offices or public libraries. These can be completed today, or returned at a later date.
- We will hold more consultation days as the project progresses and you will be given the chance to comment again as the scheme develops.
- Closing date for submissions is **5th January 2021**

For more information visit our website or get in touch via the contact details on the back page.



PORTARLINGTON FLOOD RELIEF SCHEME

Residents, Businesses and
interested parties are invited to our
Virtual Public Consultation Event

*Presentation available to view on
the project website.*

BACKGROUND TO THE STUDY

Portarlinton is a town on the border of County Laois and County Offaly. Having suffered many previous flooding events, notably in August 2008, winter 2015/16 and November 2017, the need for a sensitive flood relief scheme to be constructed and protect Portarlinton from future flood events is apparent.

Portarlinton is split by the River Barrow which is a Special Area of Conservation (SAC), including conservation efforts for the restoration of favourable conditions for Salmon and being a catchment with previous records of Margaritifera (an endangered species of freshwater mussel).

In August 2020, Laois County Council appointed Binnies and Nicholas O'Dwyer (NOD) to develop a flood relief scheme, which is socially, environmentally, economically, and technically acceptable, to protect Portarlinton.

The Project Team consists of the Binnies/NOD joint venture, Laois Co. Co., the OPW, and Offaly Co. Co..



Figure 1— A view from the north (Spa St) into Portarlinton.

WHAT STAGE IS THE STUDY AT?

Since appointment, the Binnies/NOD team have been reviewing all relevant sources of information, including the previous CFRAM study, to identify any gaps where additional surveys or information may be required.

In addition to reviewing existing data, the hydrological analysis is currently being finalised and work has also commenced on environmental baseline surveys.

Breeding Snipe surveys, Bat Roosting surveys, and topographical surveys have been completed. A culvert and manhole CCTV survey is currently underway to investigate the condition of culverts.

Binnies/NOD have been working towards an understanding of the interactions and dependencies between rainfall, river water level and flow, and topography as well as the geology of Portarlinton, and how these factors influence the flow in watercourses in the area.

Past flood events have been taken into consideration, too. The findings of those studies, together with the results from the topographical and CCTV surveys, will form part of our hydraulic computer model.

Outline Scheme Programme

ACTIVITY	2020	2021	2022	2023	2024	2025	2026	2027
Data Collection & surveys	■	■	■					
Hydrological analysis		■	■	■				
Hydraulic analysis			■	■	■			
Scheme development				■	■	■		
Public Exhibition					■	■		
Detailed design						■	■	
Confirmation by authorities							■	■
Construction works								■
Scheme Operational								■

*Timelines provided as current best estimate and are subject to revision

NEXT STEPS

Data Collection and Review: Ongoing task where Binnies/NOD will continue to collect data, such as photos, videos, sketches, imagery, and any other relevant information which will help inform subsequent design stages and act as modes of model verification / calibration.

Detailed Surveys Once survey packages have been finalised between the Steering Group and Binnies/NOD, they will go out for tender. Any subsequent bids will be reviewed to enable the completion of the survey work, with the appointment of a specialist survey contractor. Survey works will commence as soon as possible after this.

Environmental Assessment: Binnies/NOD will continue to focus on providing the relevant environmental information to support the optioneering of the scheme design and to continue to develop the scope of works required for the environmental assessments.

Hydrological Analysis: Modelling is being progressed to understand how the river systems respond to weather events. Up to date rainfall and river flow data is being incorporated to ensure calibration to recent events.

Hydraulic Modelling: The detailed hydraulic model is being constructed and tested to produce a detailed estimation of the flood risk in the area. This includes a calibration and verification to historical events and a validity check of the existing models used for the CFRAM study.

Scheme Development and Design: All comments received in writing or through the website will be considered by the Project Team in developing the scheme from an environmental and engineering perspective.

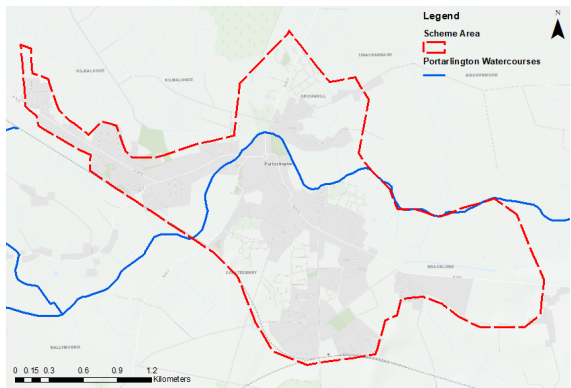


Figure 2 — Portarlinton Scheme Area.

YOUR OPPORTUNITY TO TAKE PART

At this early stage of the project it is important that we have the opportunity to listen to the views of those who will be living and working near the scheme, and others who may also have an interest in the long term plans.

The virtual public engagement event is a chance to meet the team and hear more about the project. See the other side of the brochure to find out details and other ways that you can get involved.



Figure 3 — River Barrow at Portarlinton Gauging Station.