

Background to the Study

Flood risk to Portarlington and the surroundings with possible mitigation measures were assessed in detail as part of the South Eastern Catchment Flood Risk Assessment and Management Study (South Eastern CFRAM Study). The results of the CFRAM study were used to develop a strategy and set cost-effective measures for the long-term management of flood risk along the River Barrow as set out in the Barrow Flood Risk Management Plan (FRMP) (Office of Public Works, 2017).

In August 2020, Binnies UK Limited (Binnies) and Nicholas O'Dwyer Limited (NOD) Joint Venture were commissioned to carry out the Portarlington Flood Relief Scheme (FRS) by Laois County Council (LCC), working in partnership with the OPW.

Project Timeline and Key Milestones

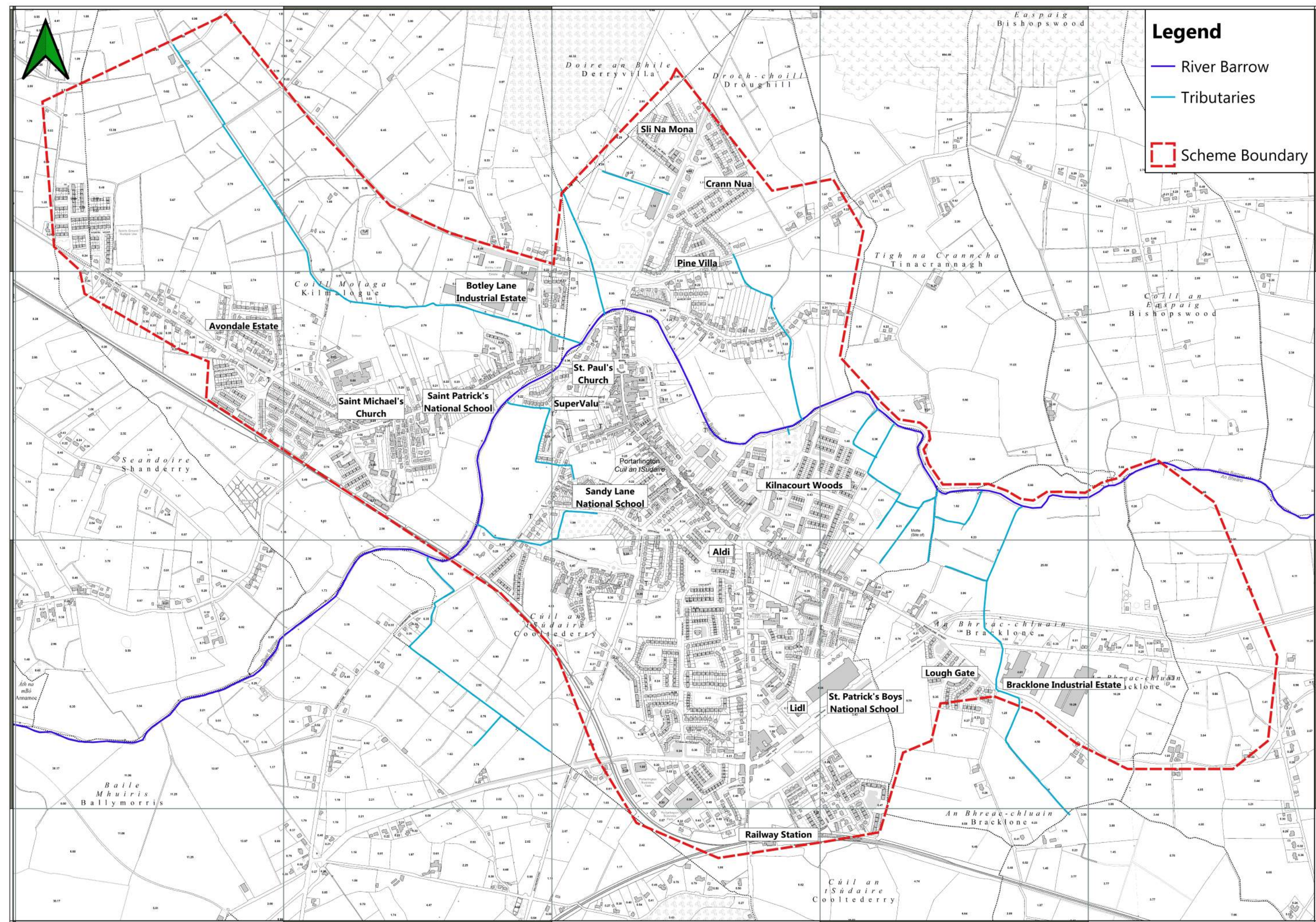
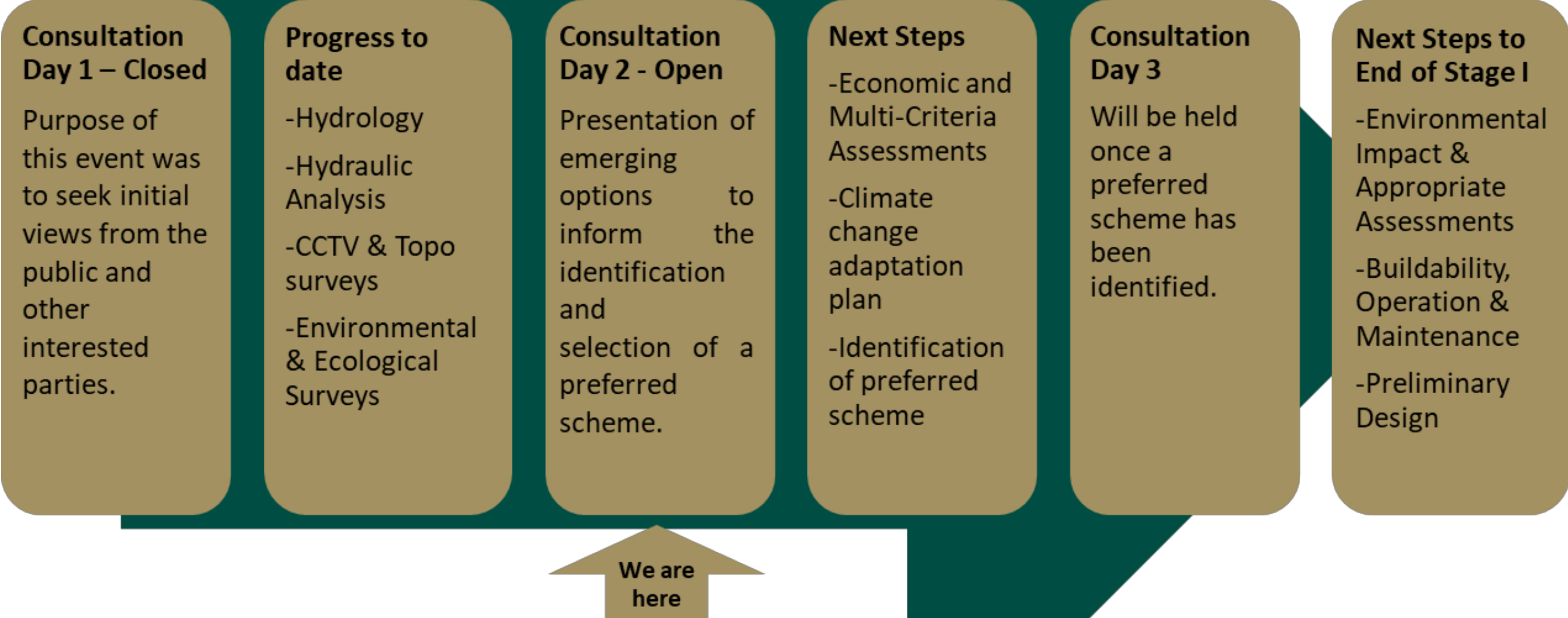
TIMELINE OF SCHEME PROGRAMME									
ACTIVITY	2020	2021	2022	2023	2024	2025	2026	2027	2028
Stage I - Scheme Development and Design									
Stage II - Planning Process									
Stage III - Detailed Construction Design and Tender									
Stage IV - Construction									
Stage V - Handover									

Project Objectives

The objective of this project is the identification, design and submission (for planning consent) of a Flood Relief Scheme, that is:

- Technically,
- Socially,
- Environmentally, and
- Economically

acceptable, to alleviate the risk of flooding to the Community of Portarlington to a determined Standard of Protection.



Standard of Protection

The Standard of Protection (SoP) for the Portarlington FRS is the 1% Annual Exceedance Probability (AEP) event.

This corresponds to the flooding caused by a 100-year return period event.

The scheme will also be assessed for adaption to climate change for flood events that are greater than the SoP.

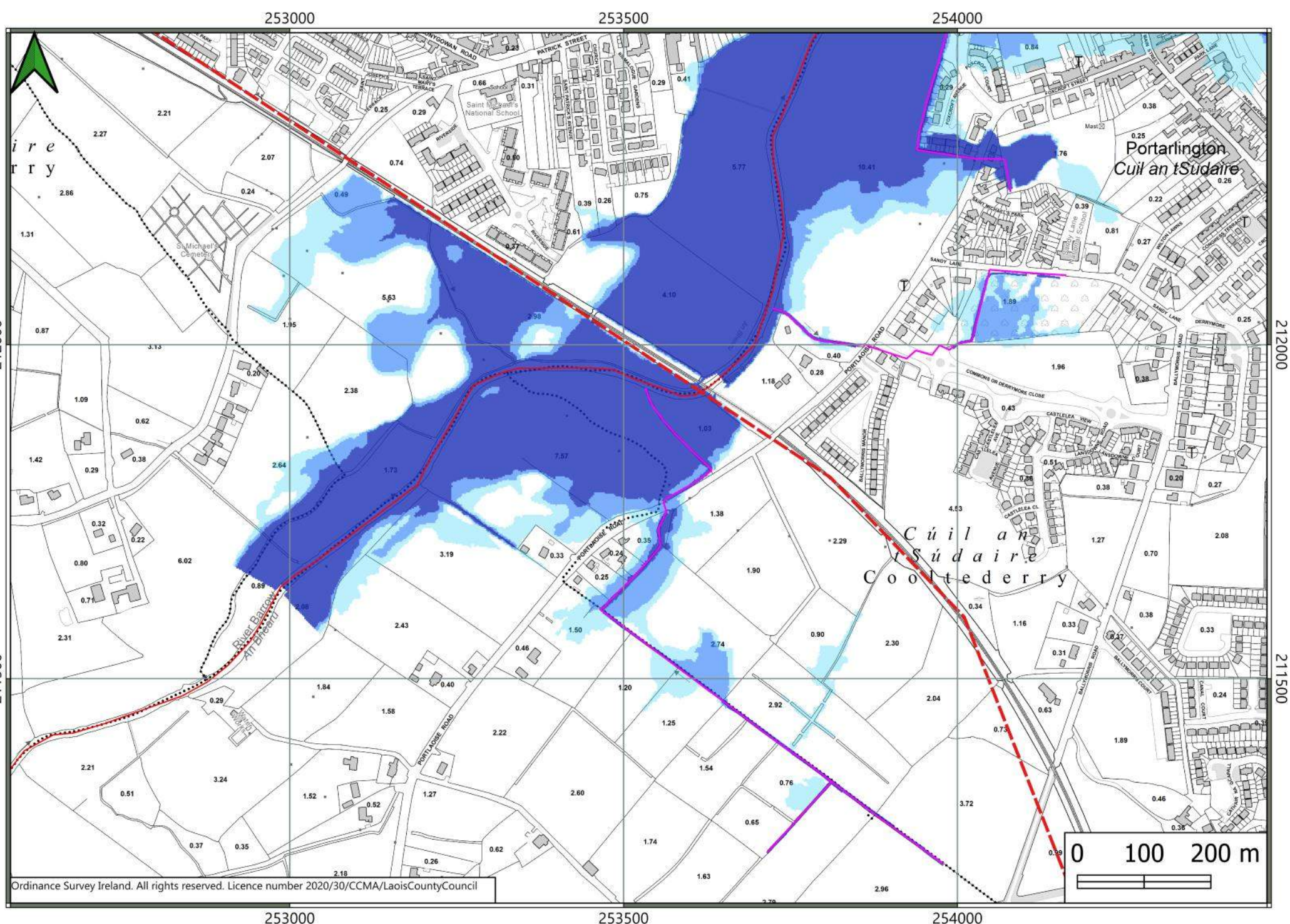


# PORTARLINGTON FLOOD RELIEF SCHEME

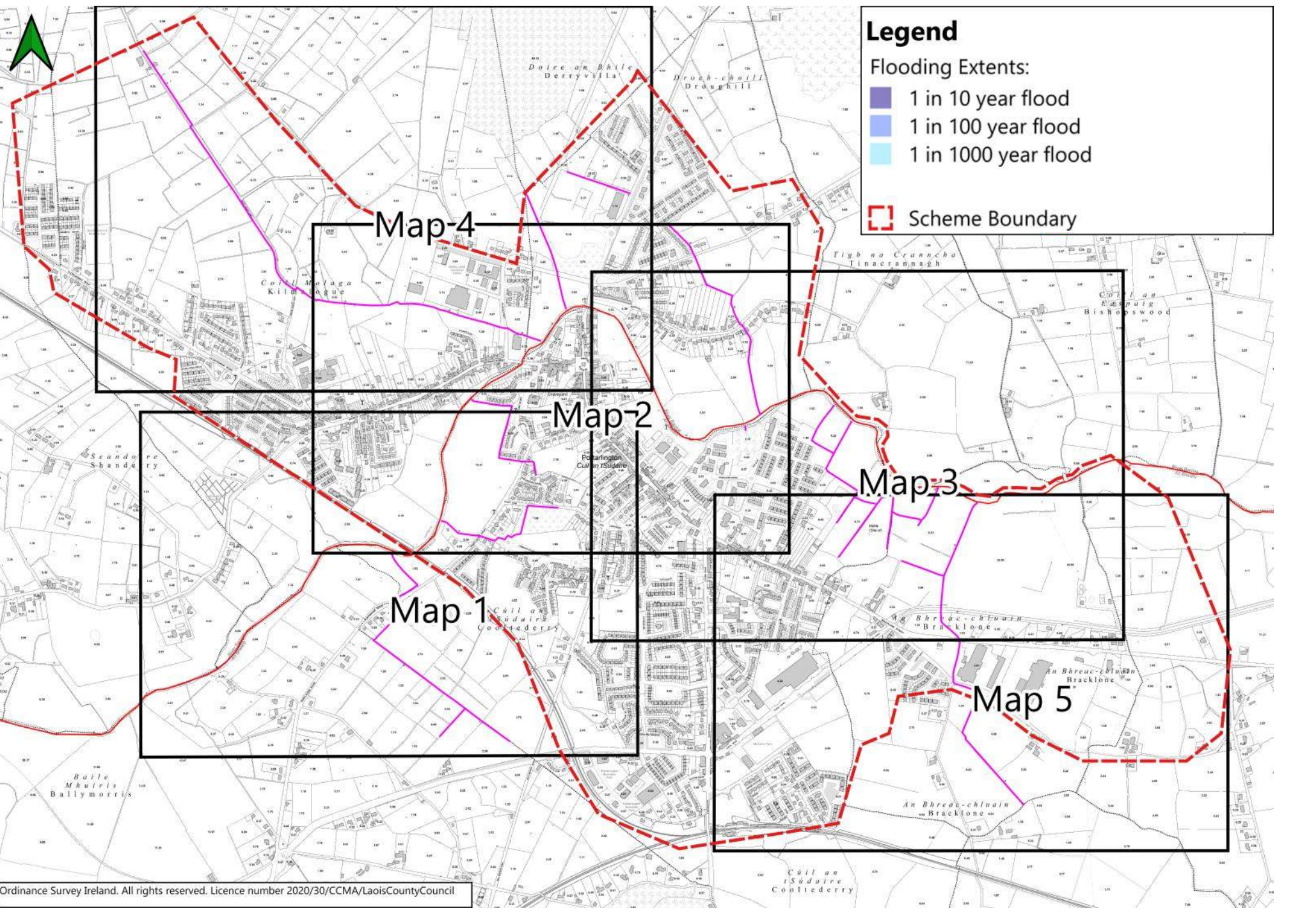
## Present Day Scenario - Flood Extent Maps

### Flood Extent Mapping

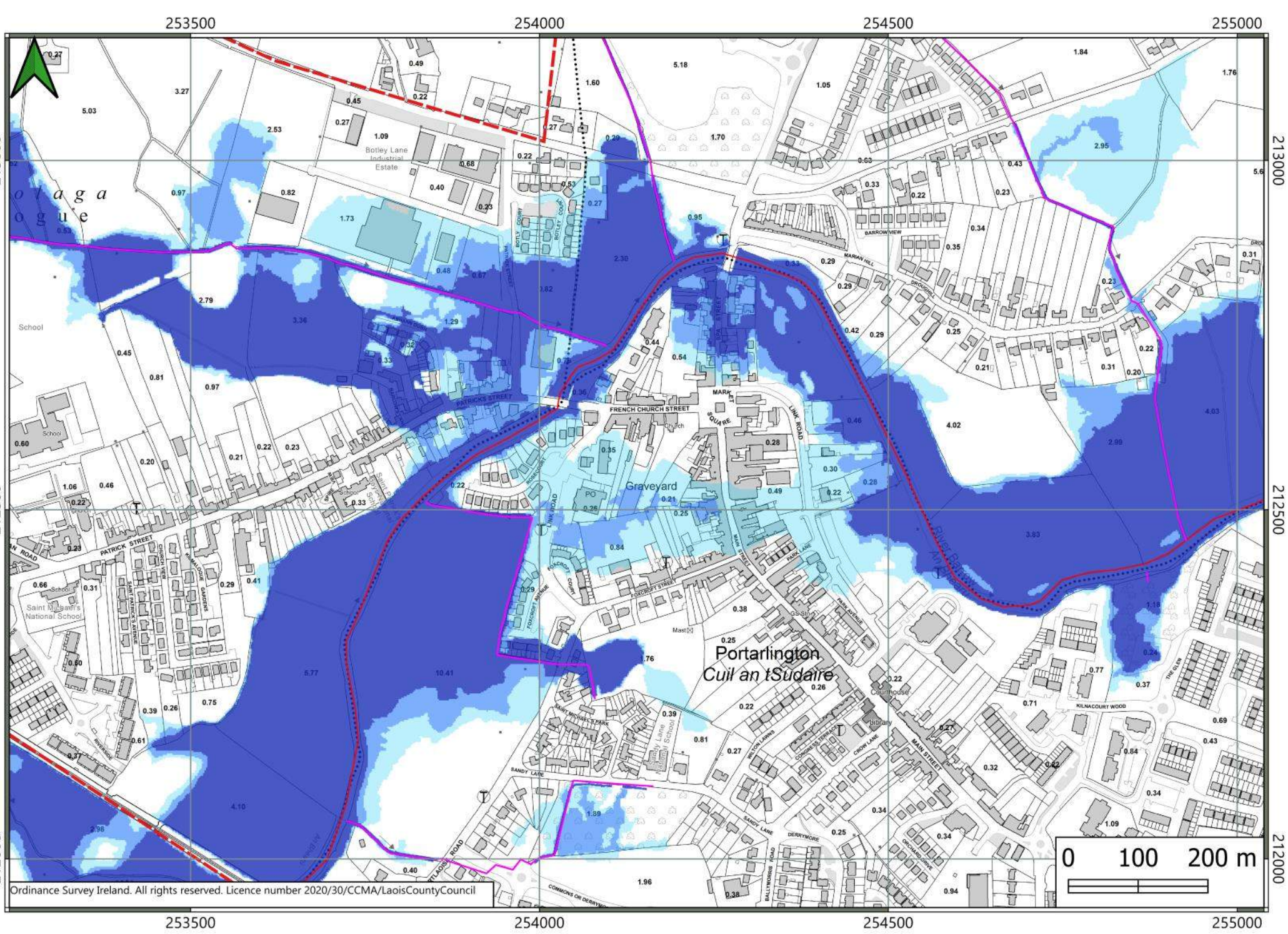
Flood Extent Map 1



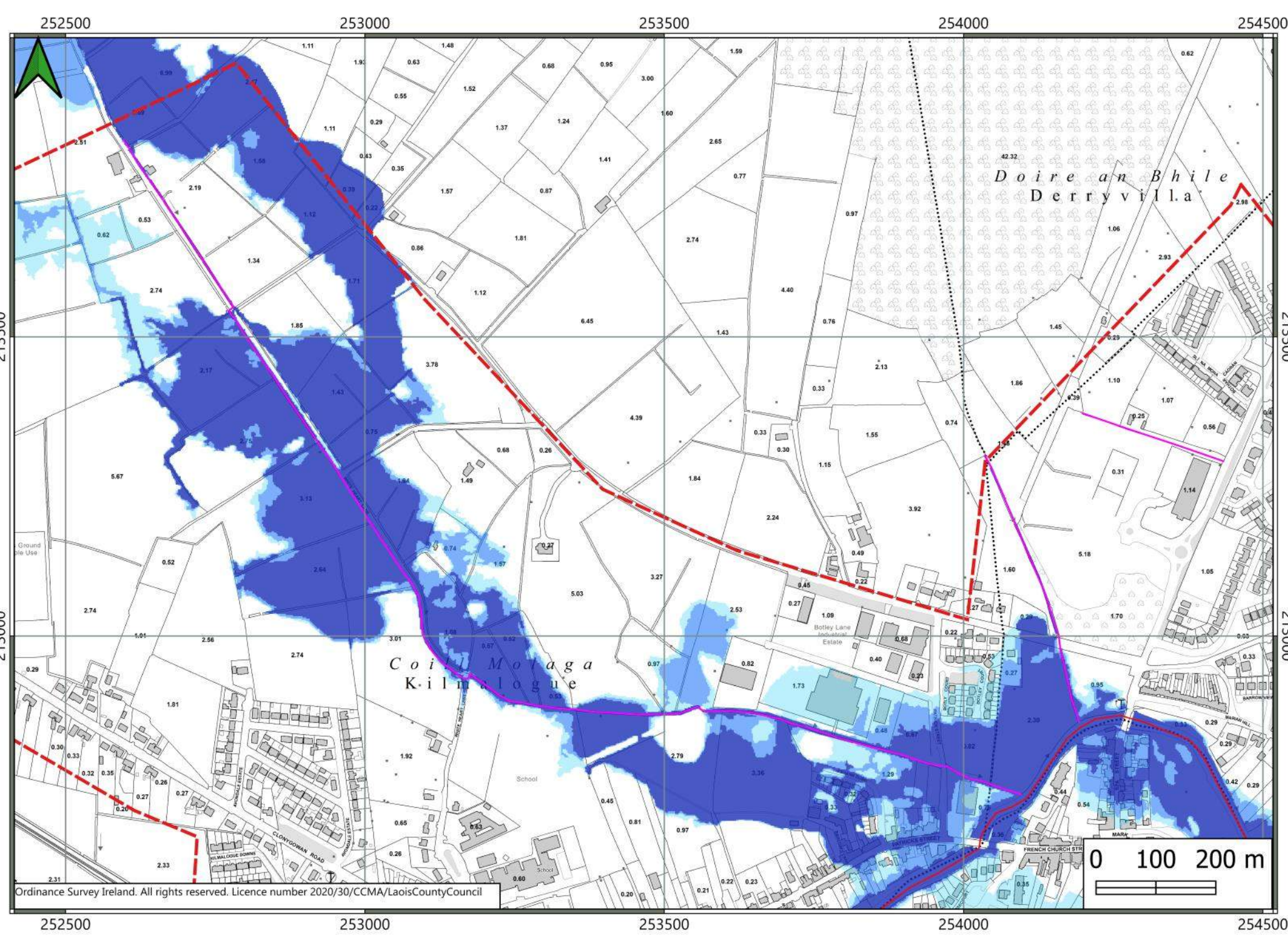
Key Map



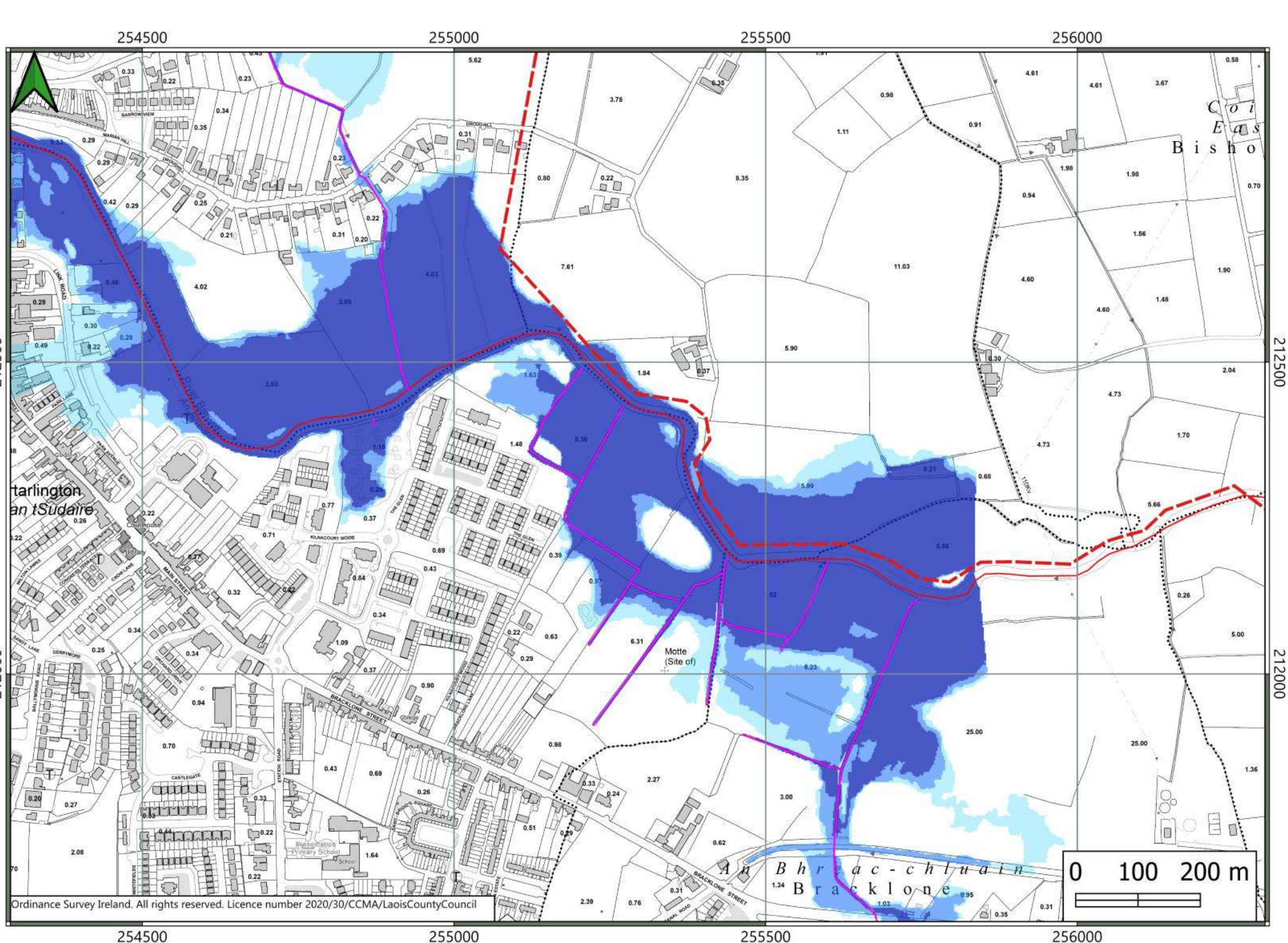
Flood Extent Map 2



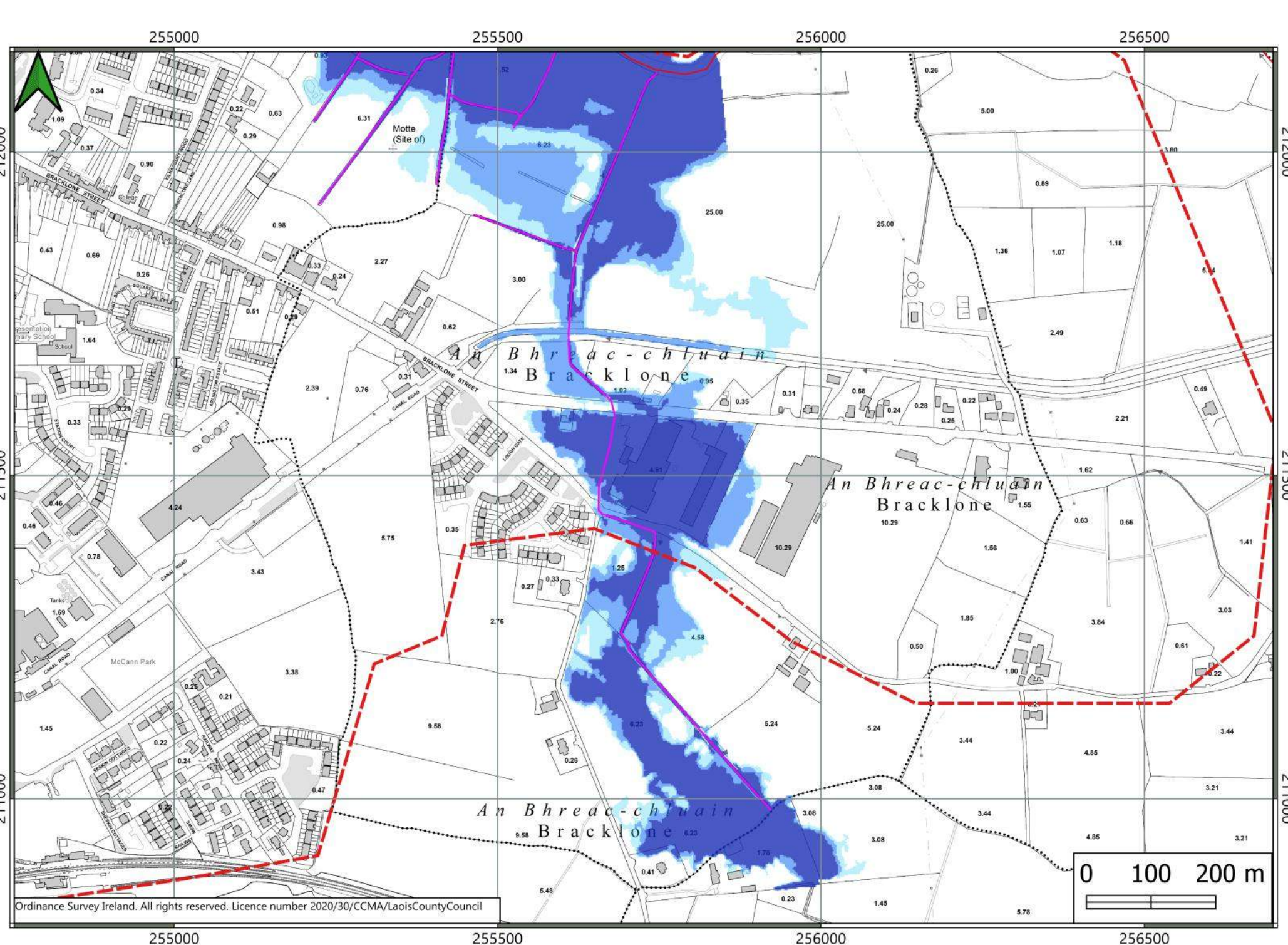
Flood Extent Map 4



Flood Extent Map 3



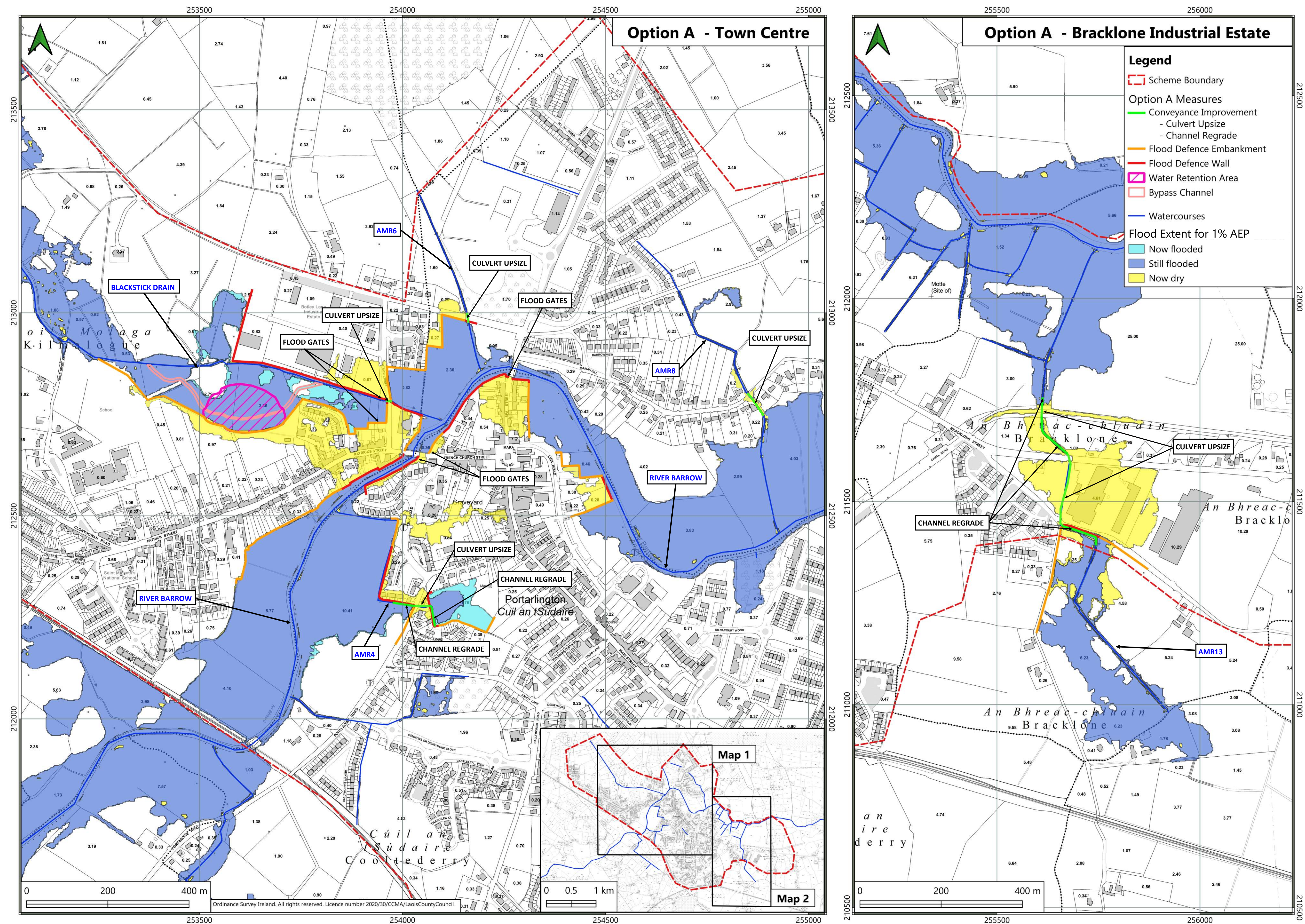
Flood Extent Map 5





# PORTARLINGTON FLOOD RELIEF SCHEME

## Emerging Option A - Proposed Flood Relief Measures





# PORTARLINGTON FLOOD RELIEF SCHEME

## Emerging Option B - Proposed Flood Relief Measures

