

Newsletter

Ballina Flood Relief Scheme



Tionscadal Éireann
Project Ireland
2040



Project Newsletter 2022

Issue 3, September



Comhairle Contae Mhaigh Eo
Mayo County Council



OPW

Oifig na
nOibreacha Poiblí
Office of Public Works



Newsletter

Ballina Flood Relief Scheme



WHAT STAGE IS THE STUDY AT?

In the period since the last Project Newsletter was issued (July 2022) the project steering group (comprising of Mayo County Council, the OPW and RPS) are continuing to ensure that the development of the scheme is based on the most accurate and up to date information.

The Hydraulic Report and Nature-based Catchment Management Feasibility Study are now completed.

Scheme Analysis and Development tasks are also nearing completion.

The RPS Environmental Team are completing additional environmental survey works in areas not previously captured and some additional targeted surveys. These surveys include habitat surveys, mammal surveys, bird surveys and bat surveys. A license application for undertaking underwater Archaeological Survey is currently being made with the survey to be undertaken in the coming weeks.

The RPS Environmental Team are currently preparing an EIAR Scoping Report.

OPTION ASSESSMENTS AND PREFERRED OPTION IDENTIFICATION:

The assessment and comparison of all potential engineering options to reduce the flood risk in Ballina using the final hydraulic model have been largely completed. Emerging preferred options for the River Moy and associated tributaries are currently being finalised through hydraulic modelling and using the outcomes of Multi-Criteria Analysis (MCA) for all potential options.

Additional topographical survey information required for carrying out detailed design of the flood protection measures are also completed at this stage.

NEXT STEPS

CONSULTATIONS: Following the identification of an emerging preferred option, a collaborative workshop with all relevant stakeholders will be organized to review the emerging preferred options. Any comments or recommendations received will be incorporated into the final preferred option insofar as is possible.

Newsletter

Ballina Flood Relief Scheme

A second, Public Consultation Day (PCD) will be held once a preferred Scheme has been identified and agreed with the Steering Group to ensure that all stakeholders and the public have an opportunity to review the proposed scheme. The comments and queries raised at the PCD shall be considered in the Scheme design and during the preparation of the EIAR.

PRELIMINARY SCHEME DEVELOPMENT: Once a preferred scheme is agreed with the Steering Group following incorporation of comments received through Stakeholder and Public Consultations, the final preferred scheme will be developed to a sufficient detail to allow the Environmental Impact Assessment process to commence.

ENVIRONMENTAL IMPACT ASSESSMENTS:

Specialist environmental assessments for the final scheme will be undertaken by the RPS Environmental Team which will inform the Environmental Impact Assessment Report (EIAR).

The Environmental Impact Assessment (EIA) process ensures that projects that are likely to have a significant effect on the environment, are assessed in advance, so that people are aware of what those effects are likely to be. The full list of projects and threshold limits above which an EIAR is required are set out in the Planning and Development Regulations. Based on the works completed to date and the likely preferred scheme it is expected that an EIAR will be required for the Ballina FRS.

The EIAR will contain an analysis of the likely effects (positive and negative), of the proposed works on the environment. This includes the likely effects on:

- People
- Flora
- Fauna
- Soil
- Water
- Air
- Landscape & Cultural Heritage

The EIAR will also set out proposals to deal with any negative effects. The EIAR must include a non-technical summary. The Environmental Protection Agency (EPA) has published guidelines on the information to be contained in an Environmental Impact Assessment Report. Further Consultations will be undertaken during the preparation of the EIAR.

Any interested individual may get a copy of any EIAR used in a planning application from the local authority or An Bord Pleanála. Individuals may comment on an EIAR in the same way as any other aspect of a planning application.

Newsletter

Ballina Flood Relief Scheme

SCHEME STAGES:

Stage I: Option Assessment, Scheme Development and Design

- Data Gathering /Topographical Survey
- Hydrological Analysis & Hydraulic Modelling
- Option Assessments & Preferred Option Selection
- Environmental Assessment (EIAR)

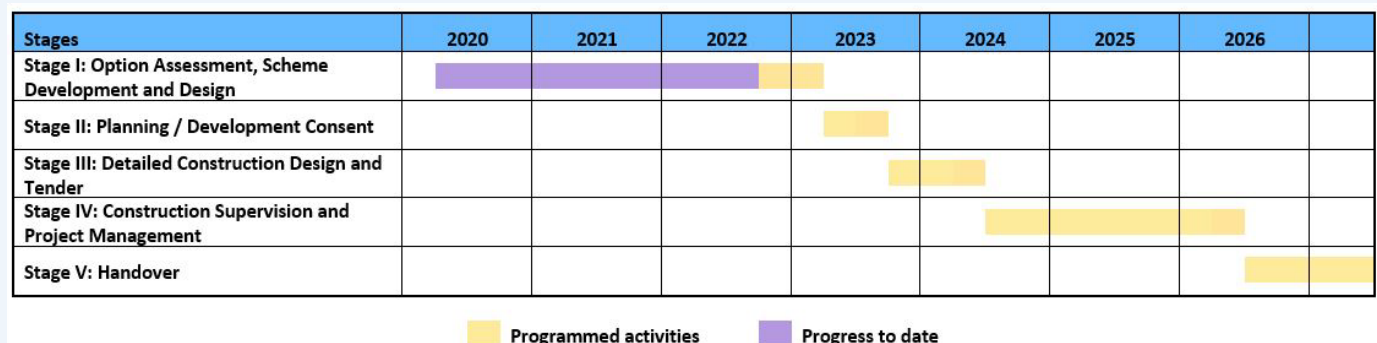
Stage II: Planning / Development Consent

Stage III: Detailed Construction Design and Tender

Stage IV: Construction Supervision and Project Management

Stage V: Handover

OUTLINE PROGRAMME:



Note: Timelines are the current best estimate but are subject to revision and approval

Contact us:

Ballina Flood Relief Scheme Project Manager
RPS Consulting Engineers, Lyrr 2, IDA Business and Technology Park,
Mervue, Galway, H91 H9CK.
Telephone: +353 91 400 200
Email: ballinafrs@rpsgroup.com