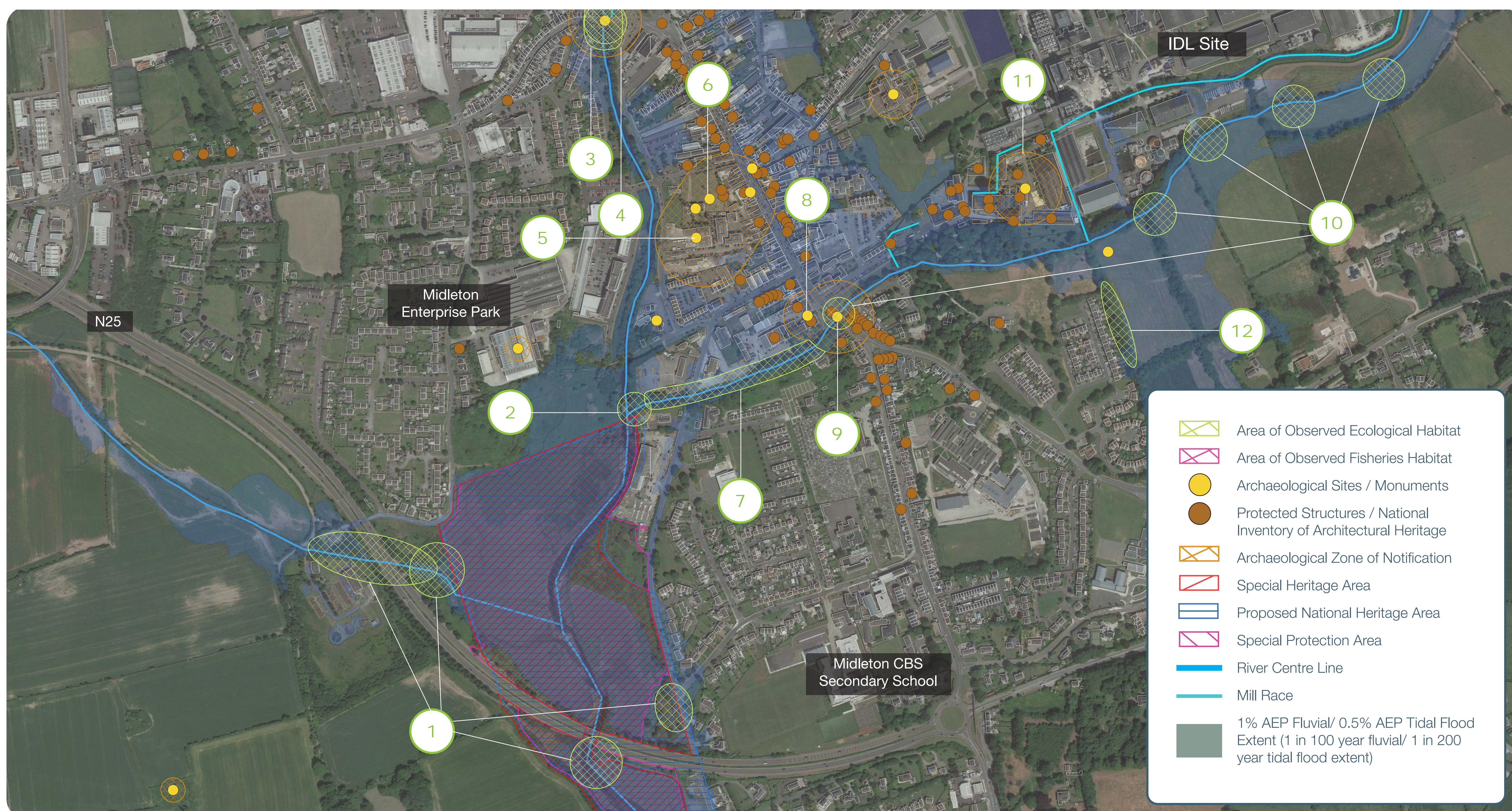


Area 3 (North) Constraints

Board
06



Constraints Map

1. Otter and bat activity was noted west of the wastewater treatment plant, and throughout the floodplains of the Owenacurra River
2. Evidence of otter activity was noted at the confluence of the Owenacurra and Dungourney Rivers
3. Three bat species were recorded along the banks of the Owenacurra River east of Market Green Shopping Centre
4. Otter activity was noted
5. Former site of the Cistercian Abbey of Chore
6. St. John the Baptist Anglican Church and graveyard
7. Two species of bat were observed along the banks of the Dungourney River in this area
8. Midleton House
9. Lewis Bridge
10. Otter activity was noted south of the IDL site and along the Dungourney River
11. Midleton distillery complex
12. Bat activity was observed east of Beechwood Drive

One option was presented at Public Participation Day No. 2 for this area as no other options were considered technically, environmentally or economically feasible:

Option 3A:

Direct defences only

Following a multi criteria analysis taking into account environmental, social, technical, and economic objectives, and feedback from the public and various stakeholders, refinements were made to the option.

Option 3A: Direct defences has been selected as the Emerging Preferred Option.

Environmental outcomes

- ✓ Minimal impact on Water Framework Directive conservation objectives, limited in-stream works required
- ✓ Minimal direct impact on Habitats and Birds Directive conservation objectives, limited in-stream works required
- ✓ Minimal impact on fisheries resource within non sensitive water body
- Some impact on landscape character and visual amenity within the river corridor/zone of influence, however defence heights are not significant and mitigation is possible through design
- ✓ Some impact on features of cultural heritage importance, however mitigation is possible and option provides increased level of protection from flooding for architectural and archaeological features of value

Technical outcomes

- ✓ Operationally robust option, minimises operation and maintenance requirements
- ✓ Adaptable to climate change, no impediment to future interventions to address future flood risk
- ✓ Interaction with existing infrastructure is manageable through design

Social outcomes

- ✓ Proportional to the impacted community
- ✓ Minimal impact on those landowners/ stakeholders who are not at risk from flooding
- ✓ Provides opportunity for additional social infrastructure, including the Baby Walk and People's Park Public Realm upgrade
- ✓ Facilitates other CCC infrastructure projects including the Pedestrian and Cycle Route from Ballinacurra to Midleton Train Station