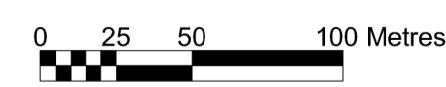


For Continuation See Drg No. LL_120

See Drg No. LL_122

For Continuation

Location Plan



- Legend:**
- 1% AEP Fluvial (River Lee) / 0.5% AEP Tidal Flood Extent (1 in 100 year fluvial / 1 in 200 year tidal flood extent)
 - Benefiting Lands (Defended against River Lee events up to the 1% AEP Fluvial / 0.5% AEP Tidal)
 - Watercourse
 - Channel Centreline Reference (C01) and Chainage (1250)

Scale 1:2,500 at A1
Scale 1:5,000 at A3

Drg. No. LL_121 Flood Extents and Benefiting Areas (Sheet 2 of 9)

- Notes:**
1. Do not scale from drawing.
 2. The channels on this drawing have been assigned colours for the purpose of assigning identification labels and interference references.
 3. This drawing should be read in conjunction with all other Lower Lee (Cork City) Drainage Scheme Exhibition Drawings and Schedules.



One Aup & Partners Ireland Ltd,
One Albert Quay,
Cork, Ireland.
Tel: +353 (0)21 4277670
Fax: +353 (0)21 4272545



24 Grove Island,
County Kerry,
Co Limerick,
Ireland.
Tel: +353 (0) 61 345463
Fax: +353 (0) 61 280146



Cork City Council,
City Hall, Anglesea Street,
Cork, Ireland.
Tel: +353 (0) 21 4960222
Fax: +353 (0) 21 4314236



Cork County Council Headquarters,
County Hall, Carrigrohane Road,
Cork, Ireland.
Tel: +00 353 (0) 21 4276891
Fax: +00 353 (0) 21 4276321



51 St. Stephen's Green,
Dublin 2,
Ireland.
Tel: +353 (0) 1 647 6000
Fax: +353 (0) 1 661 0147