

SORENSEN

Monthly Site Environmental Audit

SPILL CONTROL
OIL
ABSORBENT
GRANULES

INVASIVE
PLANT
SPECIES
AREA



Glanmire Flood Relief Scheme

02/01/24 To 26/01/24

Details			
Project:	Glanmire Flood Relief Scheme		
Auditor:	TF/SD/LD	Audit Period:	January
Locations Audited: All sites.			

Week Commencing 2nd January

Comments/Observations

- Silt mitigation measures reimplemented at Sallybrook attenuation area – silt curtains, straw bales, gravel dams. (oil booms added as a precautionary measure.)
- Extension of Reg 49 licence to transport Japanese knotweed infested material applied for.
- Otter derogation licence applied for holts and couches likely to be impacted by 2024 works, as per 2023 survey reports.
- POD –contaminated waters discharging through drainage line, filtering out through drainage stone and Terram to back of temporary sheet piles (Sallybrook) 2no. silt curtains and oil booms added downstream of discharge point. Visual checks completed daily for contamination. Turbidity monitored daily. (Figure 1 + 11)
- Incident report for Siltation event @ Meadowbrook Housing Estate (14th Dec 2023) attached as separate document.

Week Commencing 8th January

Comments/Observations

- Extension of Reg 49 licence received from NPWS, licence expires: 30/06/24
- Timber removed from Area 1 embankment under supervision from IAPS Specialist + outfall pipe from manhole dug through embankment. (Figure 2)
- Buddleia (*Buddleja davidii*) removed from Hazelwood following NRA *guidelines on the management of noxious weeds and non-native invasive plant species*. Root ball removed from plant and smashed to prevent regrowth. (Figure 3)
- Environmental Tour completed. Hazardous liquids correctly stored on spill tray, Area 1 compound. Spill kits appropriately positioned by active works POD yard. Visual check of waters discharging from POD yard found to be clean with no contamination residue/sheen present.
- NPWS Ranger site visit – discussions held on the potential for Kingfisher, *Alcedo atthis*, to nest in the vicinity (within 150m) of works planned for during the 2024 bird nesting season (March – August incl.). Discussions concluded that if nesting occurs in the bank (Figure 4 - blue dots) then works may proceed no closer than beyond that (south) of the red line (Figure 4). All works must cease in March to allow surveys of banks to be done and confirm the location of Kingfisher nests – if nesting occurs in a bank, other than that marked with blue dots and within the vicinity of works, NPWS will be consulted prior to works continuing.

Week Commencing 15th January**Comments/Observations**

- Embankment works commenced under supervision of IAPS Specialist. Improvements made to the access/egress point of the Japanese knotweed exclusion area, risk of unauthorized entry reduced (Figure 5).
- Label stickers ordered for storage containers on site.
- Area 1 stockpiles in compound moved on health and safety grounds. Stockpiles placed on separation layer in area marked as potentially infested with knotweed. During relocation one stockpile was tipped too close to the edge of the separation layer resulting in a small amount of material coming in contact with potentially infested ground – this was amended once brought to the attention of Environmental Team. Deemed inconsequential/low risk due to freezing conditions of infested ground inhibiting the movement of potentially infested material.
- Coir mesh (erosion protection) placed at Cuil Chluthair and on the head wall at Sallybrook (Area 1). (Figure 6)
- Plant washed down and removed from Japanese knotweed exclusion site (Figure 7)
- POD yard – contaminated material stockpiled in Sallybrook compound as instructed by RE. Covered with H.D. Polythene prior to rainfall events. (Figure 8 & 9)
- Topsoil laid at Cuil Chluthair – grass/tree area.
- IFI site visit – discussions had on proposed 2024 instream works. Requirement of electrofishing during Cois na Gleann culvert works discussed – electrofishing not required for upper culvert (R615) and likely is required for the lower culvert (R639).

Week Commencing 22nd January**Comments/Observations**

- Funeral home RC wall works – Japanese knotweed area marked out on the ground by the engineer as per drawing series -040-. Works supervised by site ecologist as IAPS specialist unavailable. Boot brush in place and yard brush plus Terram available at site should infestation be encountered – no infestation found, no evidence of living or chemically treated stems or rhizomes present at site.
- Funeral home – riverbank partially de-vegetated, requires erosion protection be placed prior to rainfall event.
- Plant (digger and dumper) washed down and removed from Japanese knotweed exclusion site (Figure 10)
- Fencing of Area 1 Japanese knotweed exclusion site improved to reduce the risk of unauthorized personnel entering the infested area.
- Otter activity surveys completed by consulting otter specialist – awaiting report.

Ecological Licenses Schedule

Comments/Observations

GFRS – Ecological Licences

Ecological Feature	Licence Type	Status	Start Date	Expiry Date
Badgers	Derogation	Not Required	N/A	N/A
Bats	Derogation	Not Required	N/A	N/A
IAPS	Transport - JKW	Active	02/01/2024	31/06/2024
Otters	Derogation	Active – Holts N2 & N6	TBC	TBC

Action	Assigned to	Action Close Out Date
Place erosion protection on exposed riverbank @ Funeral home site	SD/MC	05/02/24
Settlement tank @ POD yard – contents need to be disposed of appropriately before tank is brought back into use.	MH	N/A
Discuss placement of 1FF Bat Boxes @ Cuil Chluthair with Client ECoW	SD	01/02/24

Audit Acceptance/Sign-Off

Auditor Signature	Site Representative Signature
T. Field S. Dale L. Dolan	J. O'Sullivan

Space provided on following pages for Figures

Photo 1



Photo 2



Caption 1 **Section** W/C 02/01/24

(Left) Terram and stone used to filter water being discharged from POD yard (Right) Water emerging clean from drainage stones.

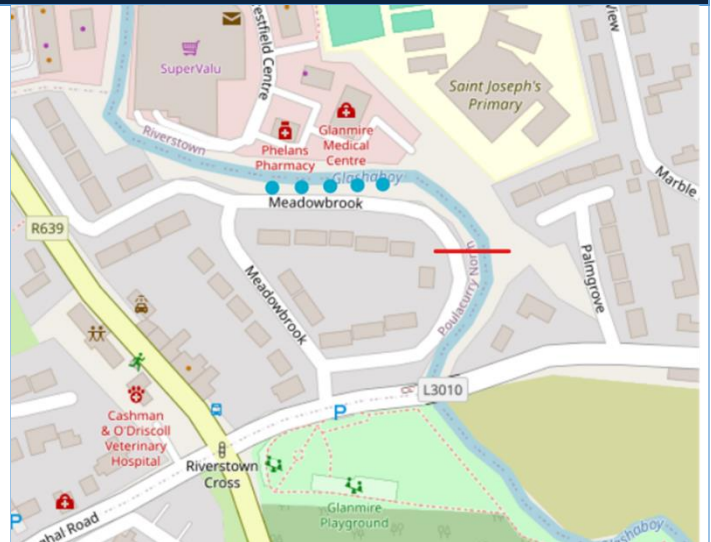
Caption 2 **Section** W/C 08/01/24

Timber removed from embankment at Area 1 under supervision by IAPS specialist with biosecurity measures in place.

Photo 3



Photo 4



Caption 3 **Section** W/C 08/01/24

Root ball being crushed and removed from Buddleia bush to prevent regrowth.

Caption 4 **Section** W/C 08/01/24

Map of Meadowbrook estate showing potential Kingfisher nesting bank (blue dots) and the agreed upon point that works can continue beyond if nesting occurs (red line – agreed with NPWS Ranger)

Photo 5



Photo 6

**Caption 5****Section**

W/C 15/01/24

Improved access/egress biosecurity procedure at Area 1 Japanese knotweed exclusion area.

Caption 6**Section**

W/C 15/01/24

Erosion control placed on bank at Cuil Cluthair

Photo 7

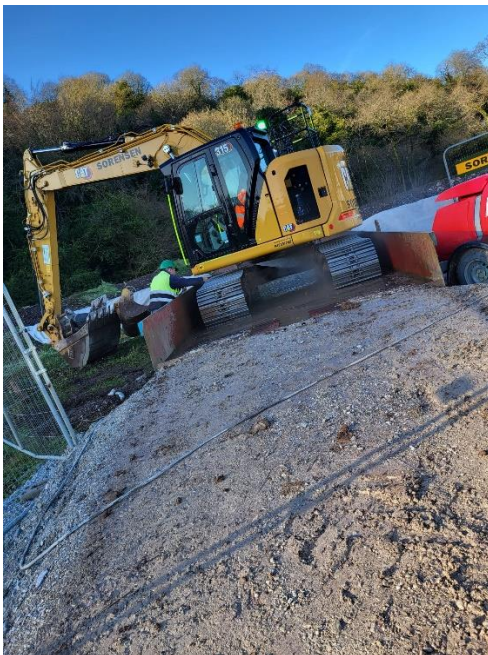


Photo 8

**Caption 7****Section**

W/C 15/01/24

Washdown procedure being implemented on plant exiting Japanese knotweed infested area.

Caption 8**Section**

W/C 15/01/24

POD yard - contaminated material correctly stored and banded in Area 1 compound.

Photo 9



Photo 10



Caption 9

Section

W/C 15/01/24

POD yard - contaminated material correctly stored and banded in Area 1 compound.

Caption 10

Section

W/C 22/01/24

Washdown procedure being implemented on plant exiting Japanese knotweed infested area.

Photo 11

SORENSEN

Discharge Water Quality Monitoring – January 2024 (GFRS)

[illegible]

Caption 11

Section

Water quality monitoring sheet - January

