

Ballina-Killaloe Flood Relief Scheme

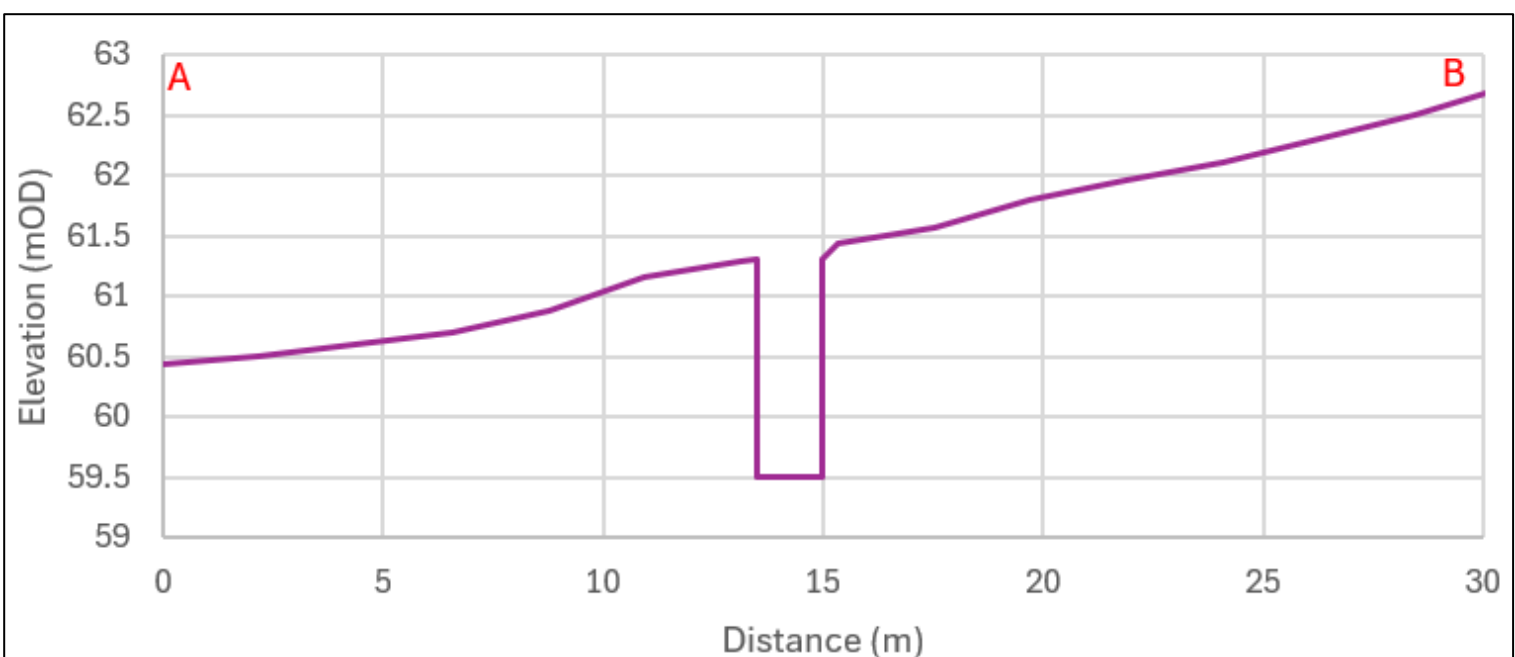
The development of the emerging option was informed by a Constraints Study, Public Consultation, stakeholders, multi-criteria assessment, an environmental appraisal (incl. climate change implications).

The preferred option for Ballina is Option 3 - the series of proposed culverted and open channel watercourses diverting the Drumbane River along Grange Road to connect with the existing watercourse at McKeogh's Yard.

This Option was also selected as the preferred option as the proposed works as McKeogh's Yard will also mitigate against the surface water flood risk in the area. Therefore, Option 3 will alleviate flooding from both fluvial (from rivers) and surface water sources, unlike the other options discussed.



Example of a typical river diversion

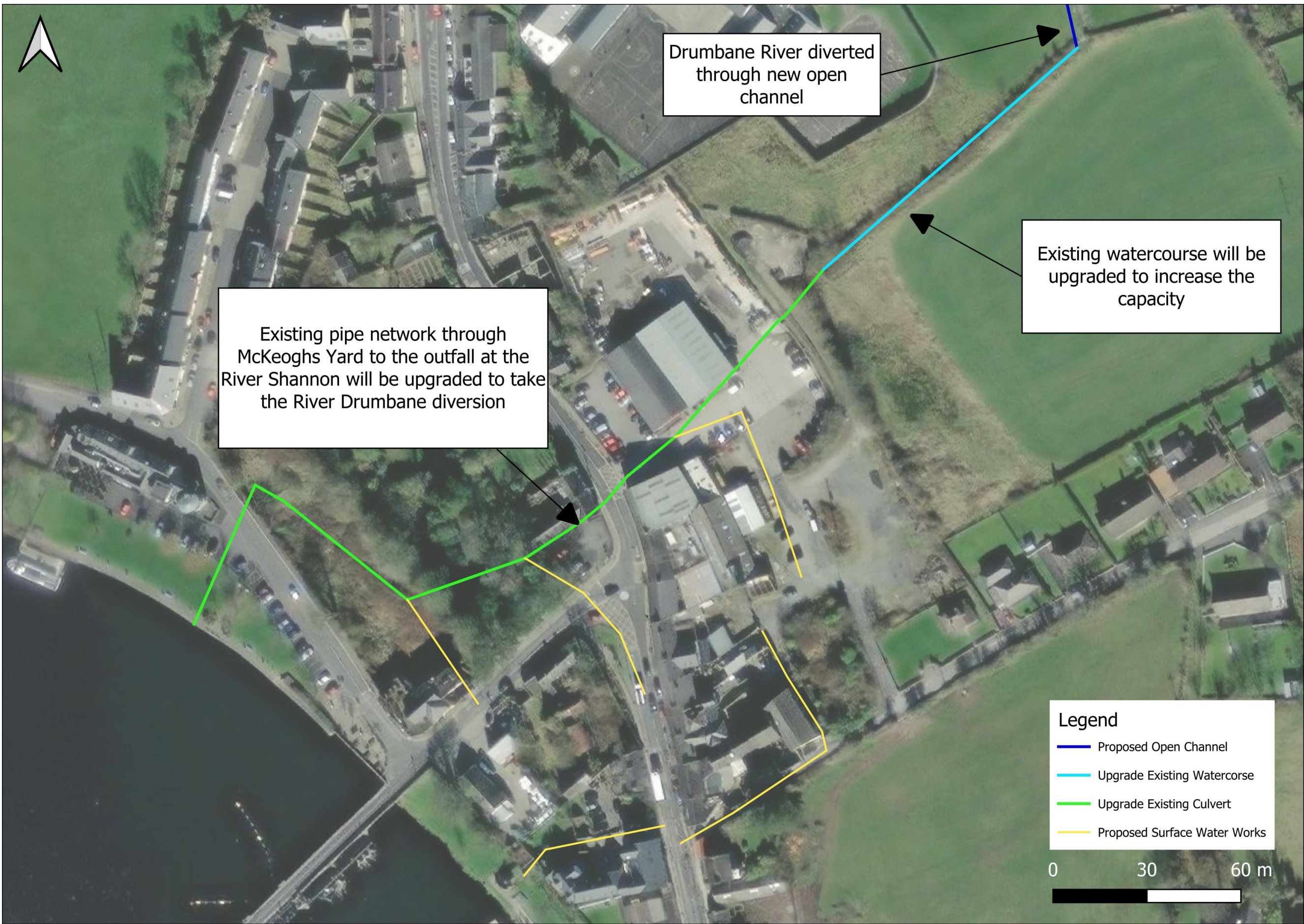


Open channel cross section design (Line A-B on figure, right)

Area 1 - Upstream



Area 2 - Downstream



Example of a typical culvert being installed



Example headwall

Refer to Board 7 for Surface Water Details