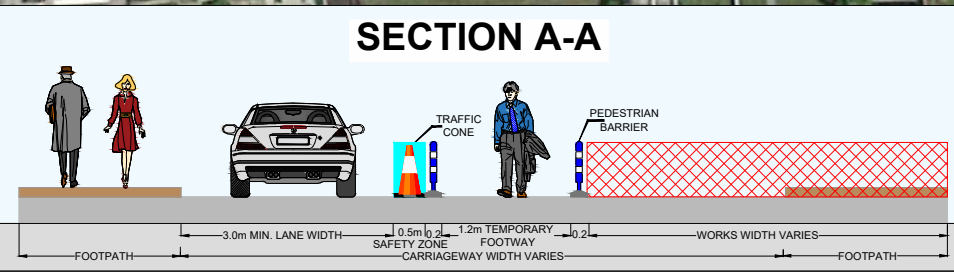
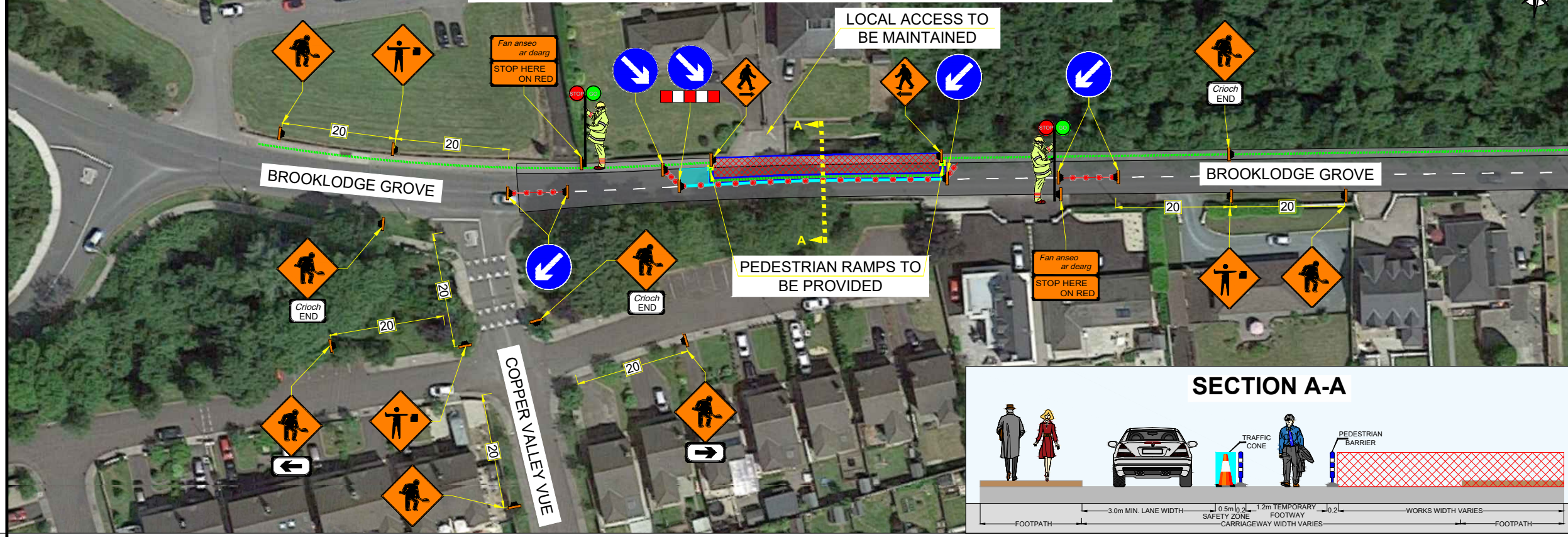
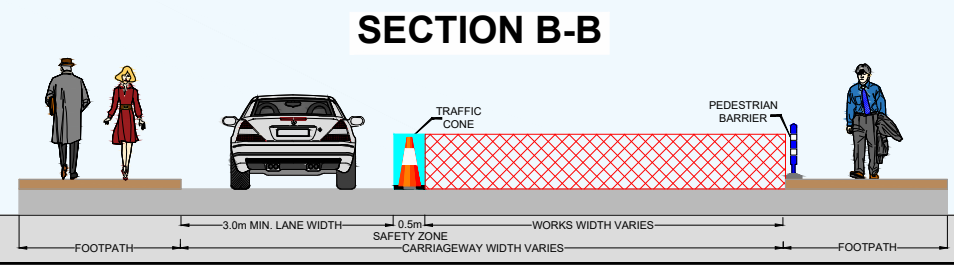
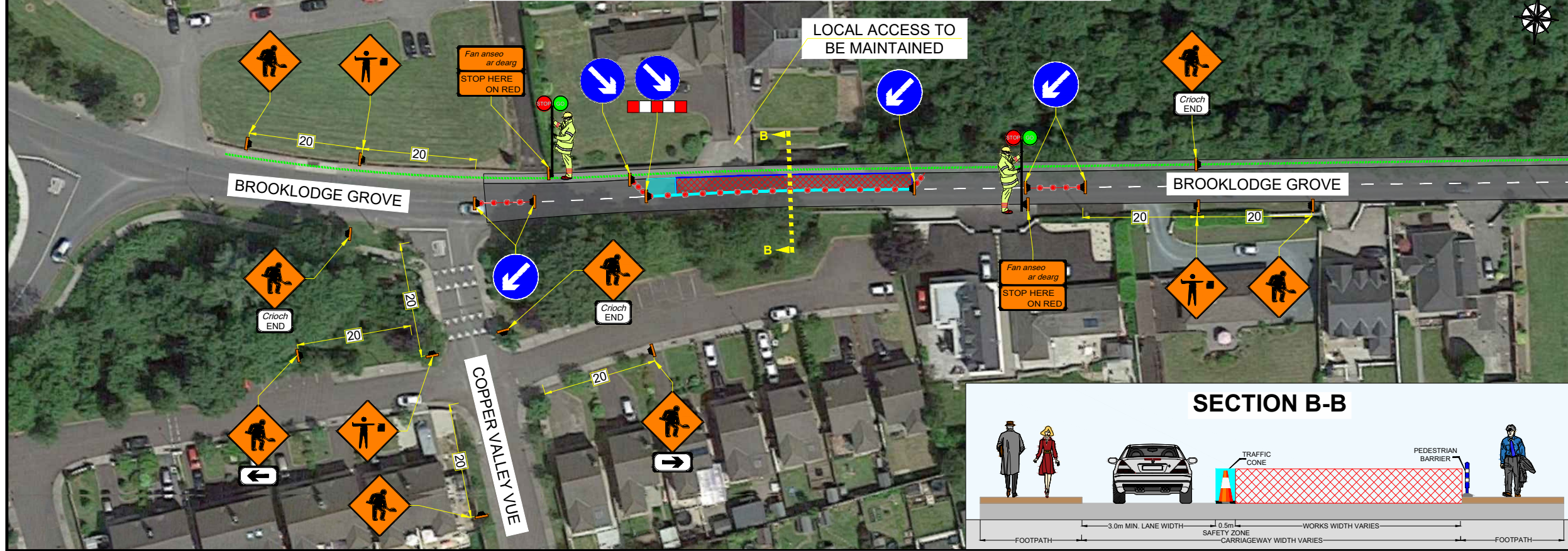


GLASHABOY RIVER DRAINAGE SCHEME, CO. CORK

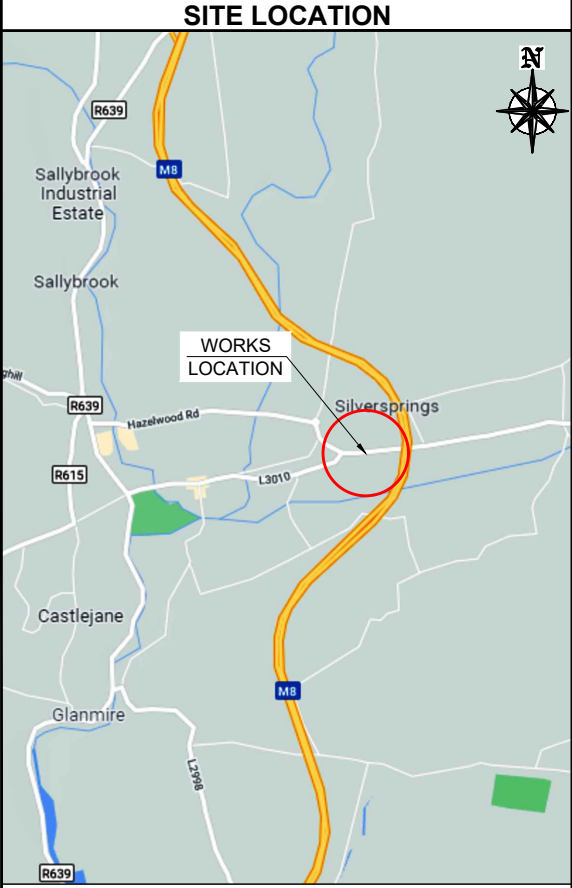
AREA 2 BROOKLUDGE GROVE - STOP & GO - PHASE 1



AREA 2 BROOKLUDGE GROVE - STOP & GO - PHASE 2



DESIGN PARAMETERS	
CHAPTER 8 ROAD LEVEL:	1(III)
SPEED LIMIT:	50km/h
ROADWORKS TYPE:	B
NUMBER OF SIGNS:	2
SIGN VISIBILITY:	50m
DISTANCE BETWEEN SIGNS:	20m
SIGNS SIZE RECTANGULAR - MIN.:	600mm
SIGNS SIZE CIRCULAR - MIN.:	600mm
CONE HEIGHT - MIN.:	750mm
TAPER CONE SPACING:	1m
LONGITUDINAL CONE SPACING:	3m
RATE OF TAPER:	45°
SAFETY ZONE:	LONGITUDINAL-5m; LATERAL-0.5m
UNOBSTRUCTED WIDTH:	3.3m
MAXIMUM LENGTH OF SHUTTLE:	500m
MINIMUM LANE WIDTH:	3.0m
TM SYSTEM:	STOP & GO



LEGEND	
	- TEMPORARY TRAFFIC SIGN
	- TRAFFIC CONES
	- WORKS AREA
	- SAFETY ZONE
	- PEDESTRIAN BARRIER
	- PEDESTRIAN ROUTE

REV	DESCRIPTION	DATE	REV BY	CHK BY

CLIENT:

PROJECT:
GLASHABOY RIVER DRAINAGE SCHEME,
CO. CORK

TITLE:
AREA 2 - BROOKLUDGE GROVE
STOP & GO

DIRECTOR:	BE	PM:	MC	CHECKED:	MC	
SCALE:	NTS	DRAWN BY:	TM	DATE:	10/01/22	
STAGE:	CONSTRUCTION					
DRAWING NO.:	EN 6312 - 004 - 005				REV:	00

COMPLETE HIGHWAY MAINTENANCE

UNIT 28, SECOND AVE TEL: (01) 424 2070
COOKSTOWN IND. EST. EMAIL: info@chmtd.ie
TALLAGHT, D24, IRELAND WEB: www.chmtd.ie

GENERAL NOTES

- THIS TRAFFIC MANAGEMENT PLAN MAY ONLY BE IMPLEMENTED BY A TEMPORARY TRAFFIC OPERATIONS SUPERVISOR (TTOS) WHO MUST CARRY OUT A SITE RISK ASSESSMENT TO MODIFY (IF NECESSARY) THE MEASURES DESCRIBED TO SUIT ACTUAL SITE CONDITIONS BEFORE IMPLEMENTATION.
- THE TTOS MUST BE IN POSSESSION OF THE VALID CONSTRUCTION SKILLS REGISTRATION CARD 'SIGNING, LIGHTING, AND GUARDING AT ROADWORKS' CONSTRUCTION REGULATIONS 2006.
- THE TTOS TO DETERMINE EXACT POSITION OF SIGNS CONSIDERING THE SITE SPECIFICS.

- IN ORDER THAT THE REQUIREMENTS SET OUT IN SECTION 17(2) OF THE SAFETY, HEALTH & WELFARE ACT (2005) AND SECTION 16 (F) OF THE CONSTRUCTION REGULATIONS ARE MET, THE PSCS MUST ADVISE THE PSDP AND ALL RELEVANT PARTIES OF ANY CHANGE TO THE TEMPORARY TRAFFIC MANAGEMENT PLAN.
- ALL WORKS ARE TO BE CARRIED OUT IN ACCORDANCE WITH LOCAL AUTHORITY REQUIREMENTS AND TO BE INCLUDED IN THE SITE SPECIFIC SAFETY & HEALTH PLAN.
- MAINTENANCE CHECKS SHOULD BE CARRIED OUT AT REGULAR INTERVALS AND IN ACCORDANCE WITH CONTRACT SPECIFICATIONS.
- TEMPORARY SIGNS SUPPORTS OR STANDS SHOULD BE DESIGNED IN ACCORDANCE WITH SPECIFICATION TS4.

- CONTRACTOR TO CARRY OUT A SITE RISK ASSESSMENT PRIOR TO THE INSTALLATION OF THE TRAFFIC MANAGEMENT PLAN TO ENSURE THAT CONDITIONS REFLECT THOSE CONSIDERED FOR DESIGN POST SUBMISSION.
- ALL SIGNS USED FOR THIS TRAFFIC MANAGEMENT PLAN MUST COMPLY WITH CHAPTER 8 OF TRAFFIC SIGNS MANUAL LATEST EDITION.
- WK 052 SHOULD BE USED TO INDICATE THE POSITION OF A SITE ENTRANCE AND/OR EXIT. REFER TO CH. 8 FOR USAGE. BANKSMEN TO MANAGE SITE ACCESS & EGRESS.
- THE ABSOLUTE MINIMUM WIDTH ALLOWED FOR PEDESTRIANS IS 1.0m.
- SAFETY BARRIERS USED FOR THIS TMP MUST COMPLY WITH TII DN-REQ-03034-1 IS EN 1317-1 e) TEMPORARY SAFETY BARRIER

- THE CONTRACTOR SHALL BE RESPONSIBLE FOR PROVIDING ALL REQUIRED RAMP ACCESS TO ALL CHANGES IN ROAD SURFACE LEVEL WHERE TRAFFIC RUNS ON A TEMPORARY SURFACE AND ALSO FOR CYCLE/PEDESTRIAN RAMPS WHERE THERE IS A LEVEL DISCONTINUITY AS A RESULT OF THE WORKS ON CYCLE PATHS & FOOTPATHS.
- ADDITIONAL SIGNS MAY BE USED TO COMPLEMENT THE SPECIFIC SIGNS USED AT THE ROADWORKS: WARNING SIGNS - YELLOW BACKGROUND - DESCRIBED IN CHAPTER 6. REGULATORY SIGNS - DESCRIBED IN CHAPTER 5. ETC. THEY ALL MUST COMPLY WITH THE SPECIFICATIONS OF 'TRAFFIC SIGNS MANUAL' AND 'TS4: GUIDELINES, CERTIFICATION SCHEME AND SPECIFICATION FOR CONSTRUCTION OF TRAFFIC SIGNS'.

COPYRIGHT © 2022
THIS DRAWING AND ANY DESIGN HEREON IS THE COPYRIGHT OF CHM GROUP AND MUST NOT BE REPRODUCED WITHOUT THEIR WRITTEN CONSENT. ALL DRAWINGS REMAIN THE PROPERTY OF CHM GROUP.