



Kilkenny County Council
Comhairle Chontae Chill Chainnigh

In association with



OPW
Oifig na nOibreacha Poiblí
Office of Public Works



Tionscadal Éireann
Project Ireland
2040



Graiguenamanagh-Tinnahinch Flood Relief Scheme



Newsletter February 2025

IN THIS ISSUE

Introduction

A brief overview of progress on the project.

Page 2

Environmental

Overview of the environmental assessment process and progress completed in the last period.

Page 3

Hydraulic Modelling

Progress on hydraulic modelling updates

Page 3

Scheme Development

Updates from the previous period

Page 4

Public Engagement

Updates on the third public engagement event

Page 5

What's Next?

Page 6

PURPOSE

The purpose of the Graiguenamanagh-Tinnahinch Flood Relief Scheme is to alleviate the risk of flooding to the Community of Graiguenamanagh-Tinnahinch by providing a scheme that is technically, socially, environmentally, and economically acceptable.

Introduction

Kilkenny County Council in partnership with Carlow County Council and The Office of Public Works (OPW) are advancing with the Graiguenamanagh-Tinnahinch Flood Relief Scheme, (GTFRS) as abbreviated within the Newsletter.

This newsletter covers the teams progress from November 2024 to February 2025. Previous newsletters are located under 'Project Documents' on the scheme website.

The scheme is currently at Stage 1 – Scheme Development and Preliminary Design, this stage is intended to be completed in Q2 2025 and Stage 2 – Planning is due to commence in 2025.



Drone Photo of Graiguenamanagh-Tinnahinch looking upstream

Hydraulic Modelling

The project team have completed final modelling to allow the climate change assessment tasks to be finalized. From these results the project team have developed a scheme climate change adaptation plan. This plan is a live document and will be monitored, reviewed, and amended as the scheme progresses through to the completion and operational phase.

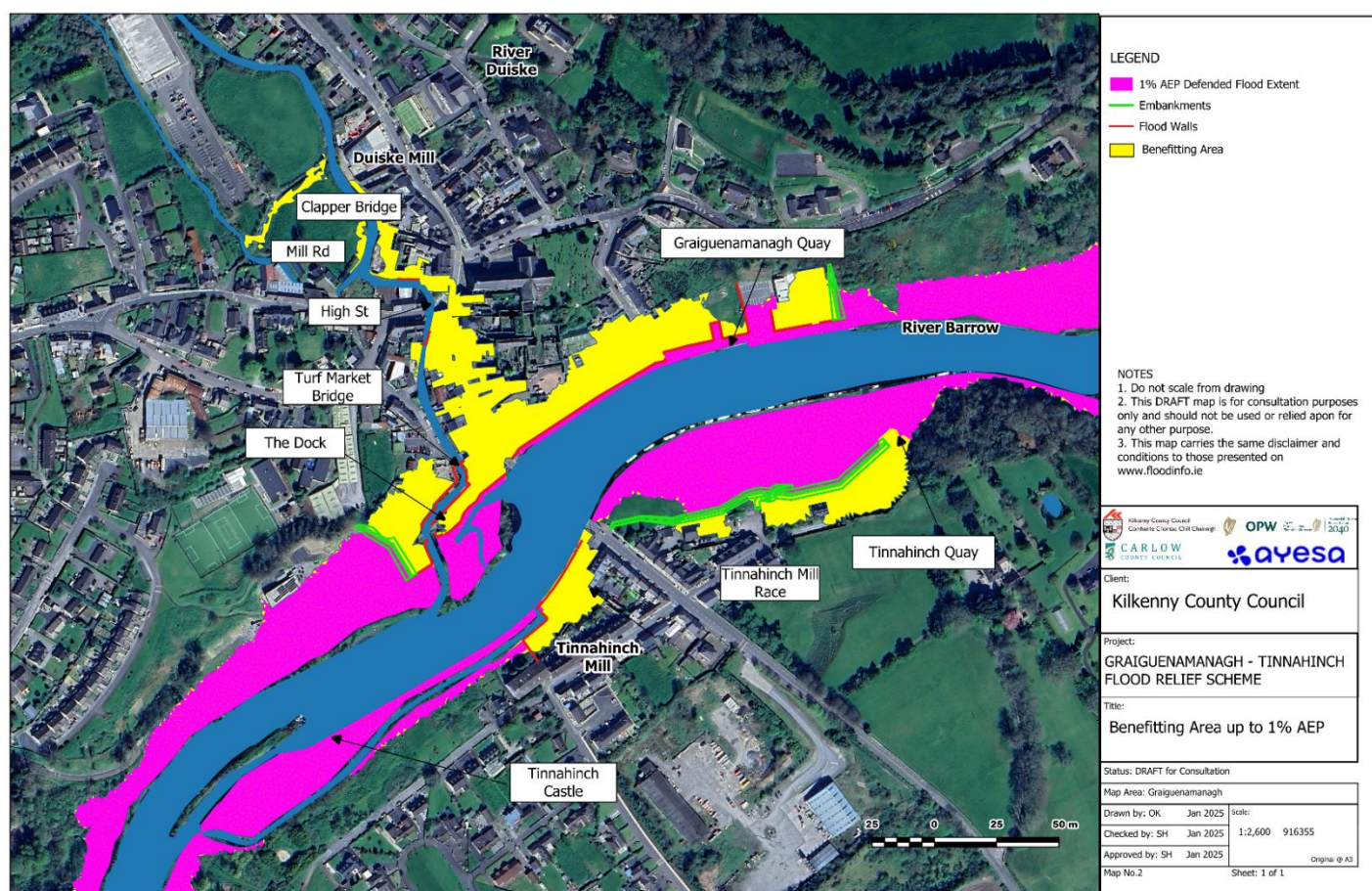
Model runs were conducted with the further developed preferred scheme options to highlight the benefitting area from the scheme compared to a 1% AEP flood event.

The benefitting area for the scheme (subject to finalisation) is outlined below.

Environmental

The Environmental Impact Assessment Report (EIAR) has progressed over the last period. Surveys, detailed designs, model runs etc., are being incorporated into respective EIAR chapters.

A detailed outline of the contents of the EIAR will be published in the last newsletter for Stage 1.



Scheme Benefitting Area – 1% AEP

Scheme Development

Ayesa have redefined the property footprints along the Duiske to represent changes in threshold levels within property boundaries. This was conducted using drone imagery and threshold survey data recorded throughout the scheme and implemented back into hydraulic modelling to compare flood levels to property thresholds along the Duiske. Pump sumps, repointing of selected walls and properties requiring flood doors have been identified to ensure robust protection from Well Lane to Turf Market.

Ayesa is developing templates and finalising documents required for planning.

Options Report

The GTFRS Options Report has been updated and finalized following the recent public display event. The report follows the process of potential measures from preliminary design, collaboration of measures into five options to the determination of the preferred option.

The preferred option was selected with considerations of public consultation feedback, stakeholder engagements, cost-benefit analysis, multicriteria analysis and damages.

The report details how the preferred option was further developed with the inclusion of the climate change adaptation plan mentioned under 'Hydraulic Modelling'.

The options report will be added to the scheme website under project documents at the end of Stage 1.

GTFRS Stage 1 Final Report

The GTFRS final report has been drafted and submitted to KCC for approval. The purpose of this report is to give summary and collate individual reporting deliverables conducted as part Stage 1 reporting of the Graiguenamanagh-Tinnahinch Flood Relief Scheme.

The final report contents include:

- Hydrological Analysis
- Hydraulic Analysis
- Technical Surveys
- Environmental Assessment
- Public Events
- Scheme Analysis
- Conclusions
- Recommendations

Public Engagement

The third public event was held on the 23rd of January 2025 in The Hub, Graiguenamanagh, between 2pm and 7pm.

Posters of the emerging option of each area requiring protection were presented. Specialist Landscape drawings, Photomontages and engineering drawings alongside planning approach, cultural heritage, environmental, and biodiversity were included in the display.

The collection of posters is available on the scheme website under Project Documents – Public Consultation Documents

<https://www.floodinfo.ie/frs/en/grauguenamanagh-tinnahinchfrs/project-info/project-documents/>

An attendance sheet was provided at the consultation to document any queries or concerns raised from the proposed option. Further questions or information can be received by contacting the project team at GTFRS@Ayesa.com.

A summary report of the Public Consultation has been developed and will be available for public viewing under the website link.



Public Consultation Event 03 – 23rd of January 2025

What's Next?

Over the next few months, the Project Team will be working on:

- ➔ Environmental Impact Assessment for the emerging option.
- ➔ Closing out Stage 1
- ➔ Preparing Land Acquisition & Wayleave Maps

Website

Details of scheme progress and documentation are available on the scheme website.



Contact Us

If you would like to contact our Project Team about any matter relating to the Graiguenamanagh-Tinnahinch Flood Relief Scheme you can do so through the following:

Email

GTFRS@Ayesa.com

Phone

021 – 2407988

Post

Project Manager Graiguenamanagh-Tinnahinch FRS
Ayesa
Building 2100
Cork Airport Business Park
Kinsale Road
Cork

If you would like any further information on the Scheme, please visit our website:

<https://www.floodinfo.ie/frs/en/grauguenamanagh-tinnahinchfrs/home/>