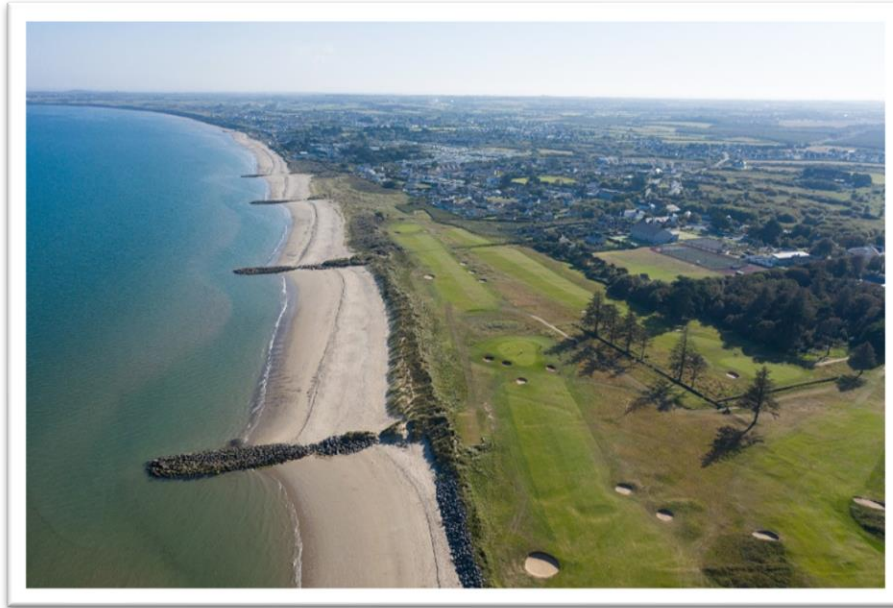


# Newsletter

## Rosslare Coastal Erosion and Flood Relief Scheme



**Coastal  
Erosion  
& Flood  
Relief  
Scheme**



**ROSSLARE COASTAL EROSION & FLOOD RELIEF SCHEME**

**Newsletter No. 01 | September 2022**



Tionscadal Éireann  
Project Ireland  
**2040**



**OPW**

Oifig na  
nOibreacha Poiblí  
Office of Public Works



**Comhairle Contae Loch Garman  
Wexford County Council**



**NICHOLAS  
O'DWYER**

# Newsletter

## Rosslare Coastal Erosion and Flood Relief Scheme

### SCHEME BACKGROUND

Rosslare Strand in County Wexford is a popular tourist destination in the southeast; it comprises a low-lying village adjacent to an extensive coastal dune system and is fronted by a sandy beach.

The coastline at Rosslare Strand has been subjected to erosion over many decades as well as repeated flooding in 1997, and in 2000 and floods that date back to 1916. In addition, there are identified areas of the coast that need to be protected in order to safeguard properties, businesses and the community. At the northern section of Rosslare Point, a number of properties are also at risk of coastal flooding.

In December 2021, WCC appointed Nicholas O'Dwyer Ltd. (NOD) to develop, design, and construct a Coastal Erosion and Flood Relief Scheme (CEFRS), that is technically, socially, environmentally, and economically acceptable, for the community of Rosslare.

The project shall be carried out in five stages:

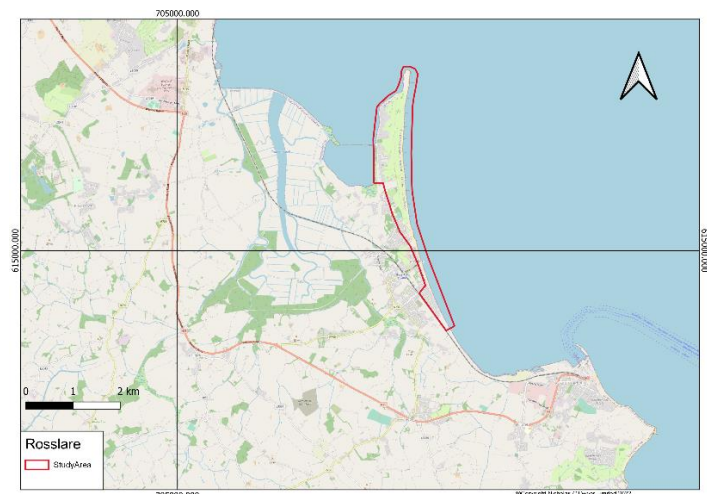
1. Options Assessment, Scheme development and Preliminary Design
2. 2(a) Planning / Development Consent Process  
2(b) Detailed Construction Design
3. Tender Process Evaluation and Award
4. Construction
5. Handover of Works

The proposed works will be designed to suit the local context and to be fully compliant with all relevant environmental legislation.

### SCHEME AREA

Shown herewith is the study area (red border) which consists of Rosslare Strand extending around Rosslare Point to the inner bay area by Burrow Road.

Refer to the map across for the extent of the proposed scheme.



### WHAT STAGE IS THE STUDY AT?

The importance of the project calls for methodological and accurate assessment of each step. The steering group members (comprising of Wexford County Council, the Office of Public Works and Nicholas O'Dwyer) have already started reviewing existing information and identification of gaps where more data or survey is required.

#### Hydrological & Hydraulic Analysis:

The Hydrology Report, containing detailed assessment to determine the tidal level estimates, fluvial hydrographs has already been prepared, which will form the basis for hydraulic modelling assessment of the Rosslare peninsula. The hydraulic modelling exercise has begun, which will help to quantify coastal processes, tidal flood risk and erosion mechanisms, in order to then develop flood protection and erosion protection options.

#### Scoping for Surveys:

Topographic Survey scope has been prepared and request for quotes are to be issued in August. Survey works are proposed to be carried out in Rosslare in coming weeks and residents will be notified in advance for access to their property.

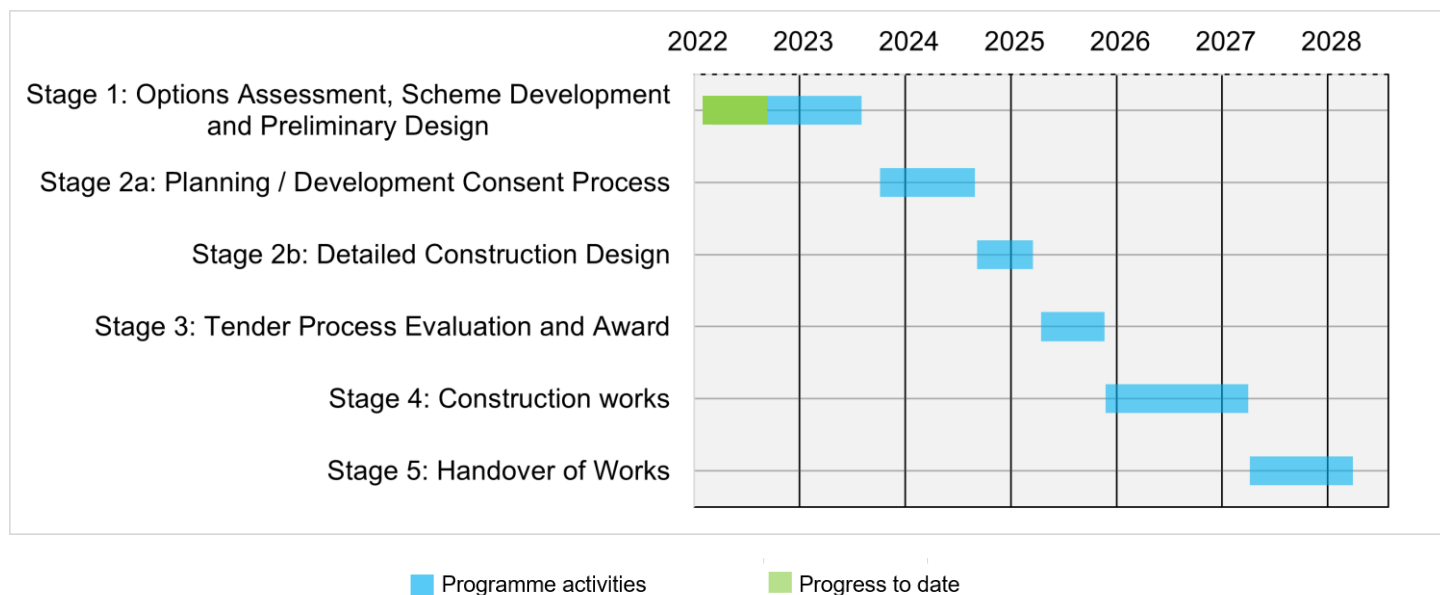
#### Environmental Assessments:

Environmental Constraints Study was completed in July which highlighted the anticipated environmental sensitivities in the study area and has identified where further habitat and species surveys are required for the coming seasons.

# Newsletter

## Rosslare Coastal Erosion and Flood Relief Scheme

### OUTLINE OF SCHEME PROGRAMME



Note : Timelines are the current best estimate but are subject to revision

### NEXT STEPS

**Data collection and Surveys:** Additional data shall be collected through threshold and topographical survey. In addition, a Survey questionnaire is being conducted by WCC on beach users, tourists and residents in Rosslare for the summer season to build an understanding of the social, leisure and economic activity in the area during peak summertime.

**Modelling:** Detailed hydraulic modelling is underway out to determine flood and erosion risk. Modelling will be done for tidal and storm event for a range of different return periods.

**Website:** The Scheme website will be live from September 2022 following a presentation to Elected Members held in July.

[www.floodinfo.ie/frs/en/rosslare/home](http://www.floodinfo.ie/frs/en/rosslare/home)



#### Contact Us:

Rosslare Coastal Erosion & Flood Relief Scheme Project Team,  
Nicholas O'Dwyer  
E4, Nutgrove Office Park, Nutgrove Avenue, Dublin 14, D14V3F6  
Telephone: +353 1 296 9000  
Email: [RosslareCEFRS@nodwyer.com](mailto:RosslareCEFRS@nodwyer.com)