



## Coirib go Cósta

Scéim Faoisimh Tuilte Chathair na Gaillimhe  
Galway City Flood Relief Scheme

Board

Public Engagement - Day No.1

# 3

## Opportunities and Constraints



*“The Environmental Area is the area within which the environmental and engineering specialists will assess for potential impacts of the scheme.”*

### What is happening now?

The scheme development is currently at Phase 1 - Identification and Development of Preferred Scheme. Establishing the Constraints Study is currently underway alongside a number of surveys within the scheme area.

### Constraints and Opportunities Study

The key environmental constraints and opportunities being considered will at a minimum be those set out in the European Environmental Impact Assessment (EIA) Directive 2014/52/ EU including:

- Biodiversity
- Land, soils and groundwater
- Hydrology and water quality
- Air quality
- Climate change
- Noise and vibration
- Population and human health
- Cultural heritage including archaeological and architectural heritage
- Landscape and visual

### The Environmental Study Area

The Environmental Study Area is the area within which the environmental and engineering specialists will assess for potential impacts of the scheme. The extent of the Environmental Study Area will depend on the nature of the constraints being identified. The Environmental Study Area will continue to be defined throughout the stages of the Scheme.

An interactive web mapper is available in this virtual room with all different constraints' layers. You can have a look at it and turn on and off the different layers and zoom in to your areas of interest, it will look like the example below. Please let us know in the questionnaire available in the room if you have any concerns.

The web mapper can be accessed at [www.coiribgocosta.ie](http://www.coiribgocosta.ie)

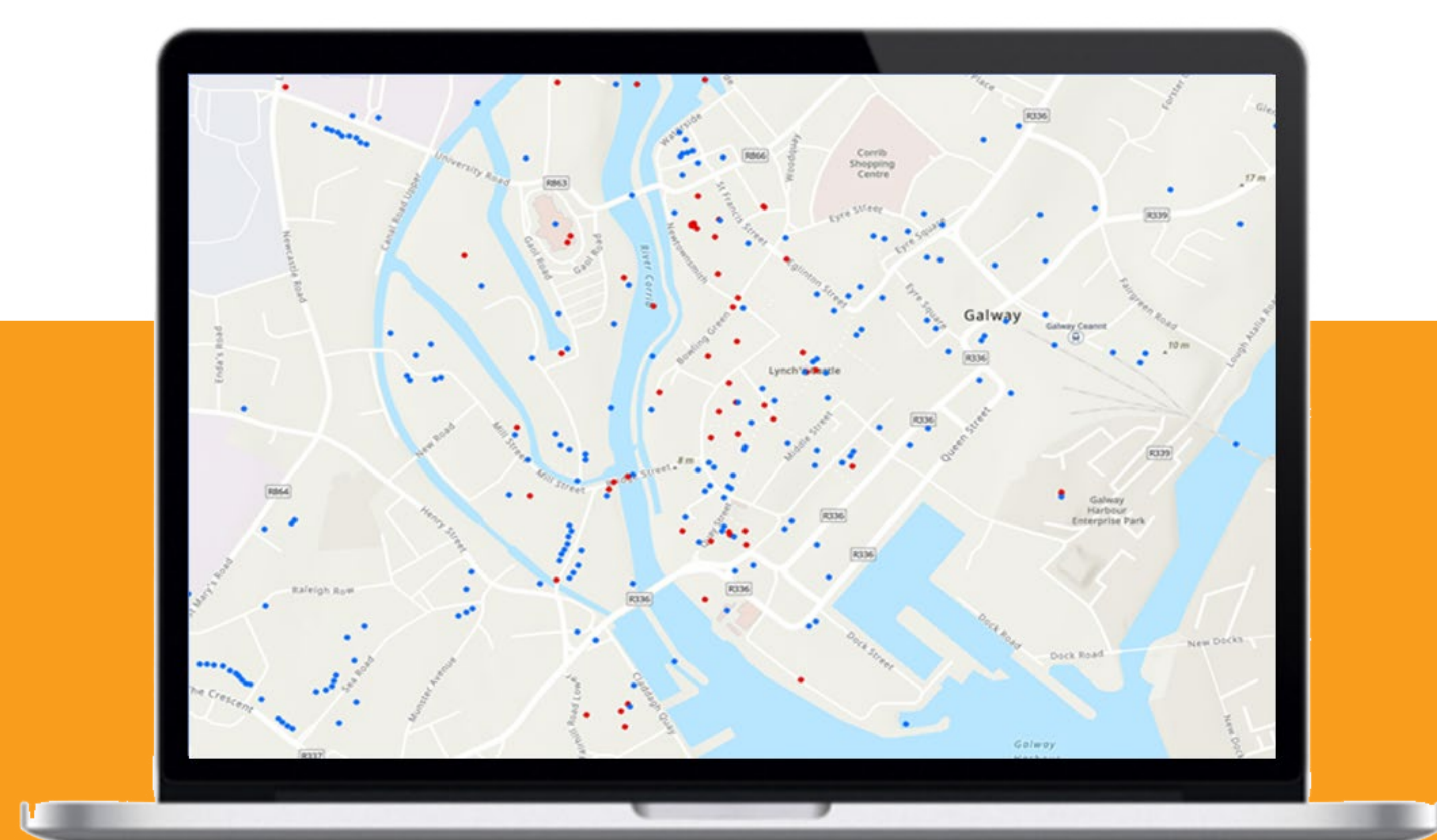
### Some of the environmental constraints defined:

**SACs** - Special Areas of Conservation (SACs) are designated sites that are recognised for their ecological value at a European level under the EU Habitats Directive (1992/43/EEC).

**SPAs** - Special Protection Areas (SPAs) are designated areas of habitat for the protection of endangered species of wild birds and Ireland is obliged under the EU Birds Directive (2009/147/EC) to designate such habitats.

**Both EU Directives (1992/43/EEC and 2009/147/EC)** were transposed into Irish law by the European Communities (Birds and Natural Habitats) Regulations (S.I. No. 477 of 2011). SPA and SAC sites are referred to as **'Natura 2000'** sites.

**NIAH** – National Inventory of Architectural Heritage



A set of drawings with the individual constraints being assessed is also available. All maps have a legend identifying the constraint and where it is located within the study area.

