

# Knocklofty Flood Relief Scheme

## Ecological Impact Assessment

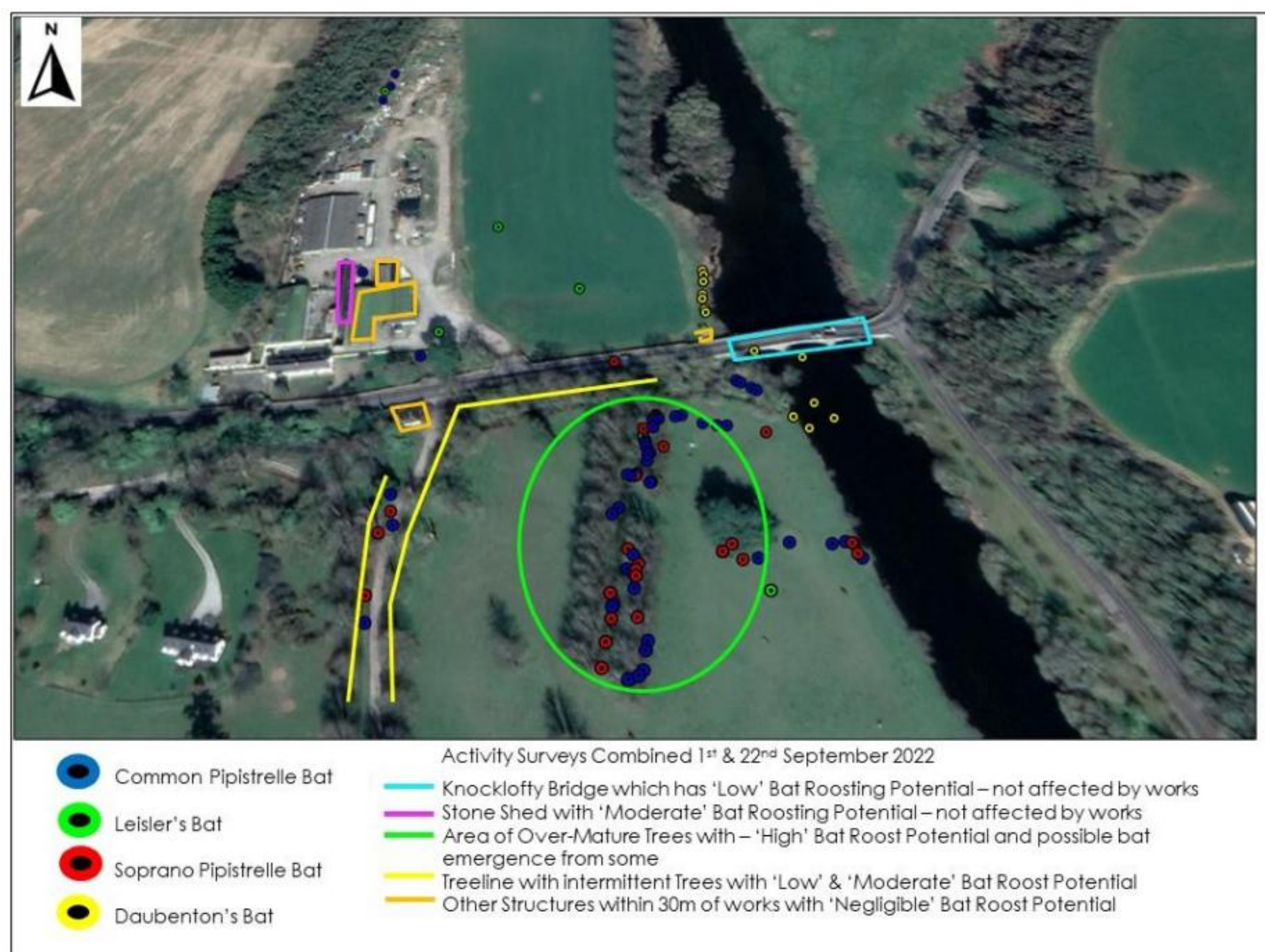
The proposed scheme area has been subject to a number of site visits by our ecologists. The following surveys have been complete:

- Habitats Walkover
- Bat Survey
- Invasive Species Survey
- Tree Survey
- Mammal Survey

The area is ecologically sensitive due to the presence of mature trees, bats and otters. The Ecological Impact Assessment has found that the construction and operation of the proposed development will **not have a significant negative impact** on biodiversity.



Mature Lime Treeline recorded during tree survey



Bat Activity Survey and Roost Potential

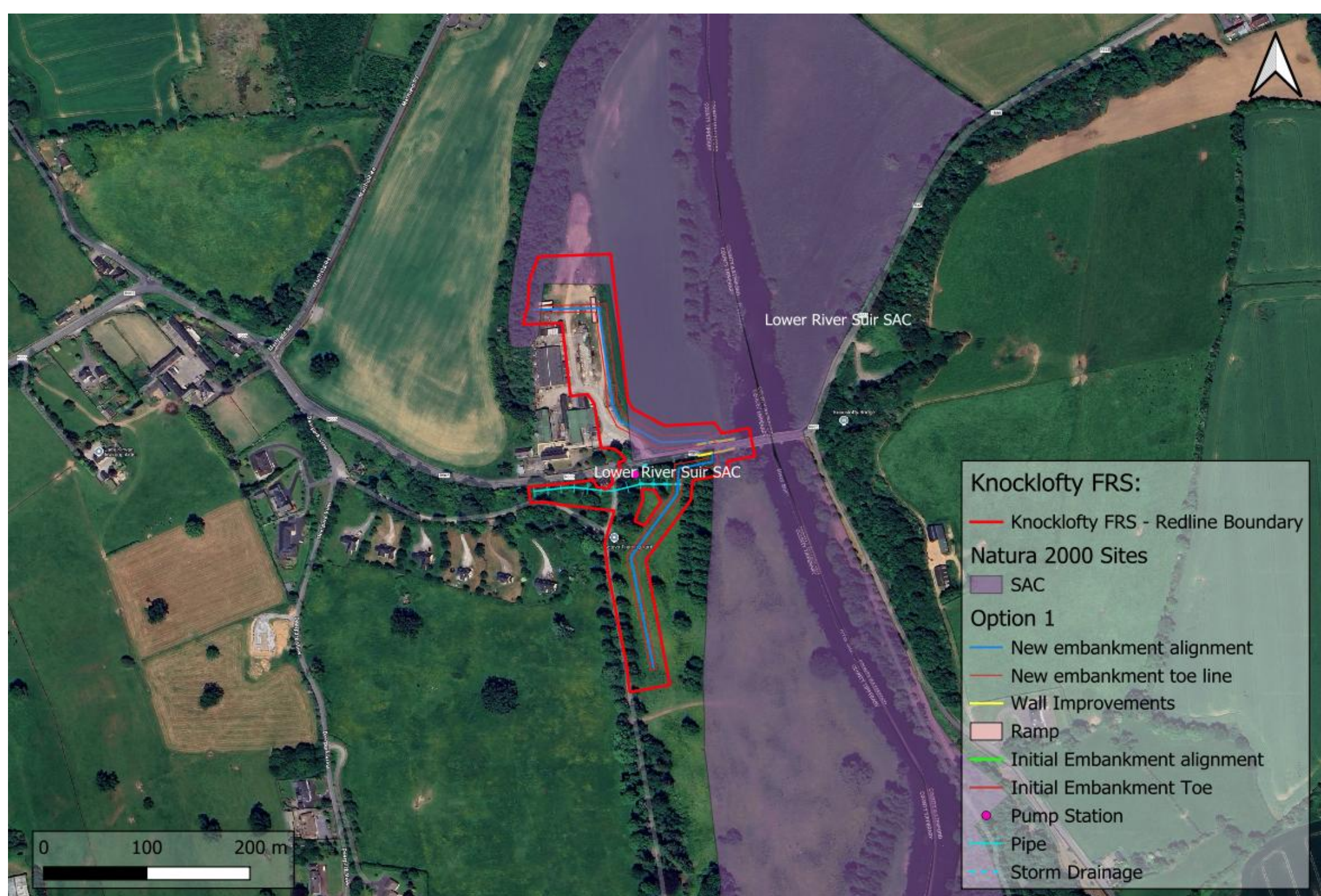


Tree survey results which informed the alignment of the embankment to minimise impacts as far as reasonable.

## Appropriate Assessment

The scheme has also undergone the Appropriate Assessment (AA) process, and a Natura Impact Statement has been drafted to assess potential impacts on European protected sites, particularly the River Suir Special Area of Conservation (SAC)

**Qualifying Interests for the River Suir SAC are:**



Lower River Suir SAC and its proximity to the proposed scheme

The draft NIS concludes that there will be **no significant adverse impacts** on the integrity of Lower River Suir SAC as a result of the proposed scheme. An Bord Pleanála will review the NIS as part of the planning process (see poster 8) and make a determination on the nature of impacts.

### Habitats :

- Atlantic salt meadows (*Glauco-Puccinellietalia maritima*) [1330]
- Mediterranean salt meadows (*Juncetalia maritimi*) [1410]
- Water courses of plain to montane levels with the *Ranunculion fluitantis* and *Callitriche-Batrachion* vegetation [3260]
- Hydrophilous tall herb fringe communities of plains and of the montane to alpine levels [6430]
- Old sessile oak woods with *Ilex* and *Blechnum* in the British Isles [91A0]
- Alluvial forests with *Alnus glutinosa* and *Fraxinus excelsior* (*Alno-Padion*, *Alnion incanae*, *Salicion albae*) [91E0]
- Taxus baccata* woods of the British Isles [91J0]

### Species:

- Freshwater Pearl Mussel (*Margaritifera margaritifera*) [1029]
- White-clawed Crayfish (*Austropotamobius pallipes*) [1092]
- Sea Lamprey (*Petromyzon marinus*) [1095]
- Brook Lamprey (*Lampetra planeri*) [1096]
- River Lamprey (*Lampetra fluviatilis*) [1099]
- Twaite Shad (*Alosa fallax fallax*) [1103]
- Otter (*Lutra lutra*) [1106]
- Salmon (*Salmo salar*) [1355]