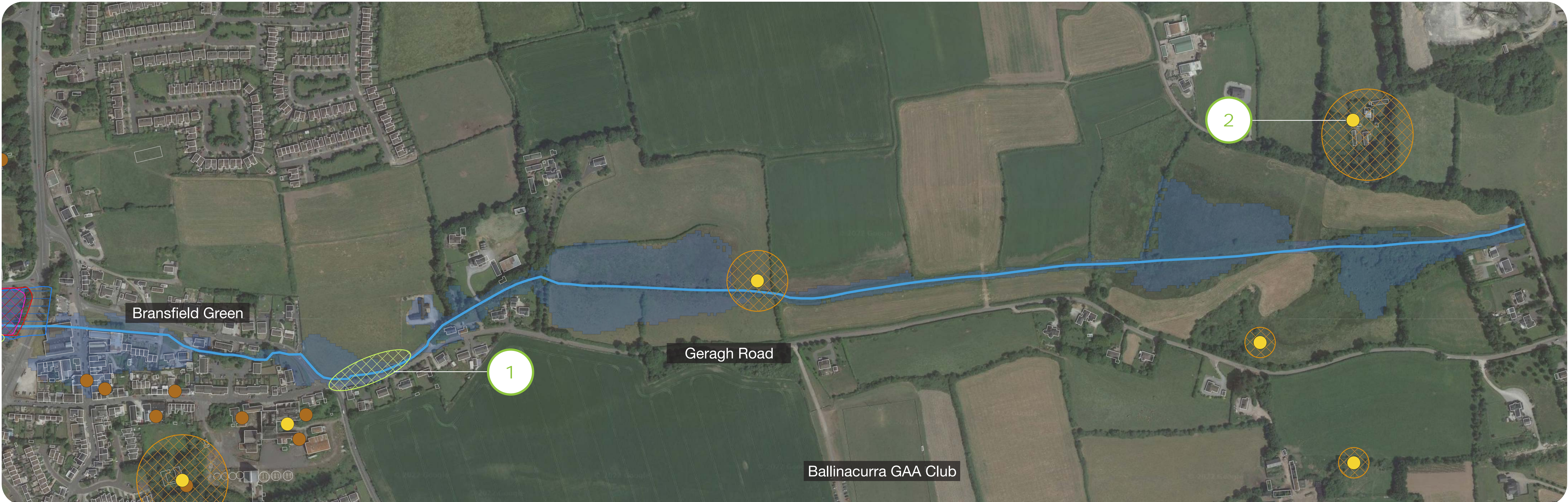


Area 5
Constraints



Area of Observed Ecological Habitat

Area of Observed Fisheries Habitat

Archaeological Sites / Monuments

Protected Structures / National Inventory of Architectural Heritage

Archaeological Zone of Notification

Special Heritage Area

Proposed National Heritage Area

Special Protection Area

River Centre Line

1% AEP Fluvial/ 0.5% AEP Tidal Flood Extent (1 in 100 year fluvial/ 1 in 200 year tidal flood extent)

Constraints Map

1. Bat activity was noted in Ballinacurra

2. Coppingerstown Castle

Two options were presented at Public Participation Day No. 2 for this area, Options 5A and 5B. A further 3 options were subsequently developed since, Options 5B-1, 5C and 5D.

- Option 5A:**

Direct defences
- Option 5C:**

Optimised direct defences and overpumping
- Option 5B:**

Upstream storage and overpumping
- Option 5D:**

Optimised direct defences, upstream storage and overpumping

Option 5B-1:

Upstream storage – Refined storage area (smaller footprint than Option 5B) and overpumping

Following a multi criteria analysis taking into account environmental, social, technical, and economic objectives, and feedback from the public and various stakeholders, **Option 5B-1: Upstream storage – Refined storage area** (smaller footprint than Option 5B) and overpumping has been selected as the Emerging Preferred Option.

This option is considered the preferred option for the following reasons:

Technical outcomes

- ✓ Some operation and maintenance requirements with upstream storage flow control structure
- ✓ Adaptable to climate change. Assumptive approach is proposed, designing the scheme now to account for an assumed future flood risk scenario
- ✓ Minimal interaction with existing infrastructure

Social outcomes

- ✓ Potential to facilitate a project of social value within the storage area

Environmental outcomes

- ✓ No direct impact on Habitats and Birds Directive conservation objectives
- ✓ No impact on landscape character and visual amenity in Ballinacurra village
- ✓ Some impact on landscape character and visual amenity upstream, however defence heights are not significant
- ✓ Some impact on features of cultural heritage importance, however option provides increased level of protection from flooding for architectural and archaeological features of value downstream

