



Plate 151: East-facing view of river channel with Lancaster Quay delineating its north side; first of three modern bridges that truncate the structure also shown.



Plate 152: North-facing view of upstream section of Lancaster Quay (1m scale).



Plate 153: Northeast-facing view along an upstream section of Lancaster Quay.



Plate 154: East-facing view along section of the original quayside forming Wandersford Quay (1m scale); Clarke's Bridge in background.



Plate 155: South-facing view showing the downstream terminus of Wandersford Quay, where it con-joints with the northern end of Crosse's Green Quay (1m scale).



Plate 156: Southwest-facing view showing the upstream (modern) section of Wandersford Quay.



Plate 157: South-facing view showing the fabric of Wandersford Quay.



Plate 158: South-facing view showing the transition between the original quayside masonry and the later addition of a rubble-stone wall at Wandersford Quay (150mm scale).



Plate 159: Southwest-facing view along Crosse's Green Quay (150mm scale).



Plate 160: West-facing view of an arched-culvert located at the southern terminus of Crosse's Green Quay (150mm scale).



Plate 161: Twentieth-century photograph showing Frenches Quay (source: *Cork Camera Club Historical Photographs*, www.corkpastandpresent.ie).



Plate 162: West-facing view of south channel from South Gate Bridge with French's Quay delineating the south side of the waterway.



Plate 163: East-facing view along French's Quay with South Gate Bridge in the distance.



Plate 164: Detail shot of drain feature located along French's Quay (150mm scale).



Plate 165: South-facing view of a section of French's Quay re-built in the Nineteenth-century (1 m scale).



Plate 166: West-facing view of an arched-culvert located at the upstream end of French's Quay (1m scale).



Plate 167: Internal view of the culvert structure located at the upstream end of French's Quay.

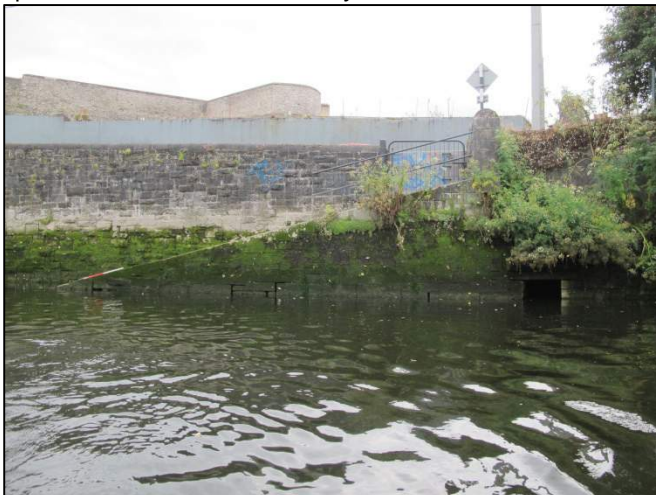


Plate 168: West-facing view of slipway located at the upstream limit of French's Quay (1m scale).

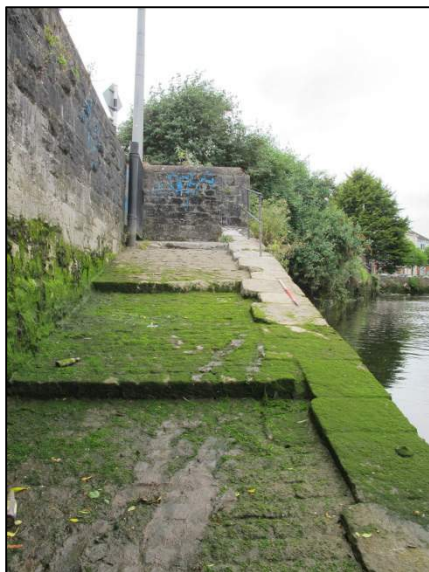


Plate 169: Northwest-facing view of slipway located at the upstream limit of French's Quay (1m scale).



Plate 170: Early twentieth-century photograph showing Sullivan's Quay to left and South Gate Bridge in distance (source: *Lawrence Collection*, www.corkpastandpresent.ie).



Plate 171: East-facing view along Sullivan's Quay on the downstream side of Nano Nagle Bridge.



Plate 172: West-facing view along Sullivan's Quay on the upstream side of Nano Nagle Bridge, South Gate bridge in distance.



Plate 173: West-facing view of the south channel showing Sullivan's Quay on left of picture, Nano Nagle Bridge in distance.



Plate 174: Flight of river-access steps built into Sullivan's Quay.



Plate 175: East-facing view of light of river-access steps built into unnamed quay on the South Mall, located opposite Sullivan's Quay (1m scale).



Plate 176: North-facing view of arched culvert located at the terminus of an unnamed quay on the South Mall, F039 (1m scale).



Plate 177: East-facing view along George's Quay from downstream side of Parliament Bridge.

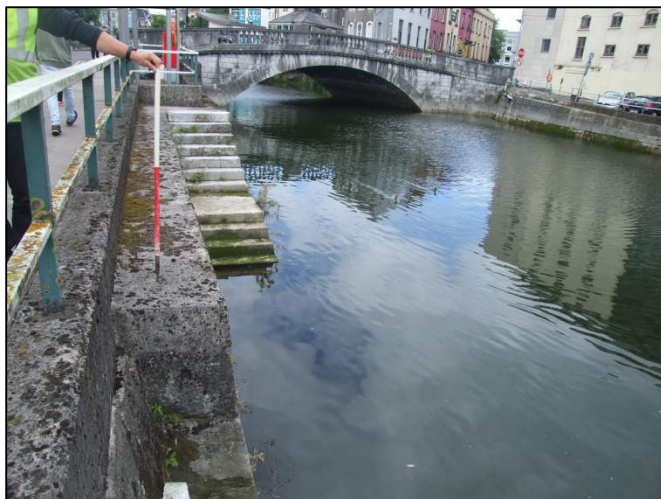


Plate 178: West-facing of river-access steps located on George's Quay, located a short distance downstream of Parliament Bridge (1m scale).



Plate 179: Example of wrought iron mooring-rings located along Georges Quay (150mm scale).

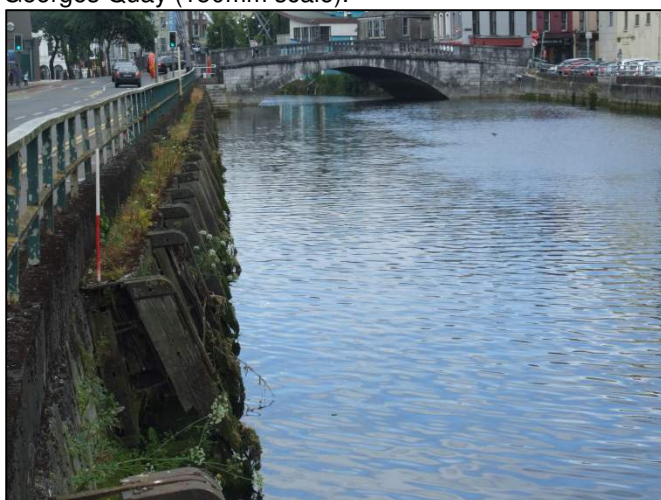


Plate 180: West-facing of view along George's Quay showing series of timber fenders (1m scale).



Plate 181: South-facing view of timber fender from George's Quay showing iron fastening at the top of timber (150mm scale).

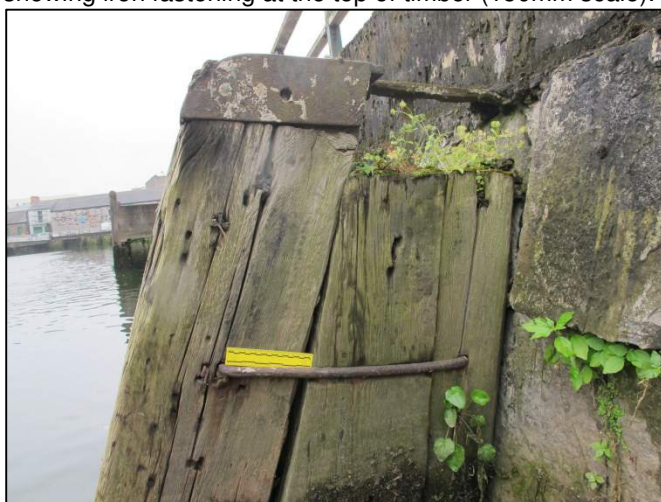


Plate 182: East-facing view of timber fender from George's Quay, showing use iron tie-fastenings (150mm scale).



Plate 183: East-facing view of composite timber/concrete wharf located along the downstream side of George's Quay.



Plate 184: East-facing view of timber fenders located at the downstream terminus of George's Quay (1m scale).



Plate 185: East-facing view along Union Quay, Parnell Bridge in distance (1m scale).



Plate 186: Detail shot of masonry comprising from Union Quay, (1m scale).



Plate 187: East-facing view of a section of timber wharf located at Union Quay, immediately downstream of Trinity Footbridge (1m scale).



Plate 188: Detail shot showing iron strap-fastenings used to secure wharf timber to the quayside (150mm scale).



Plate 189: Detail shot showing the timber assemblage that supports the wharf's timber deck.



Plate 190: Southeast-facing view of timber shuttering and concrete used to underpin Union Quay at the location of timber wharf (1m scale).



Plate 191: South-facing view of keyhole-shaped arched-culvert located along the upstream side of Union Quay (1m scale).

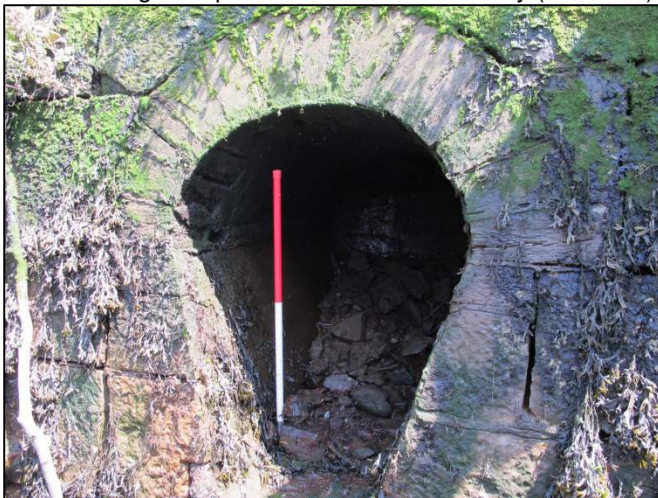


Plate 192: South-facing detail view of the arch-ring from the culvert located on Union Quay (1m scale).



Plate 193: West-facing view of a flight of river-access steps located at the upstream end of Union Quay (1m scale).



Plate 194: South-facing view of timber piles used to underpin the quay wall (1m scale).

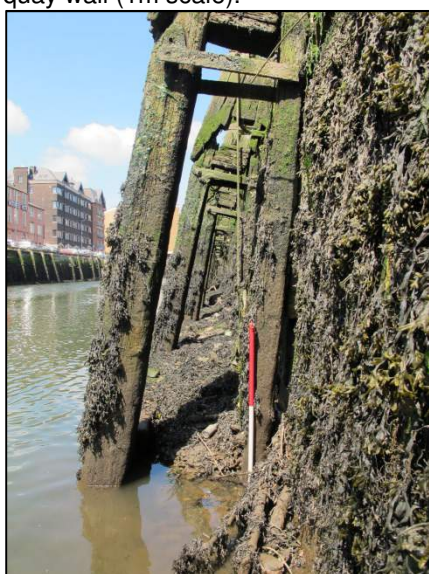


Plate 195: East-facing view of timber fenders running along Union Quay (1m scale).



Plate 196: Southwest-facing view of timber fenders running along Union Quay.



Plate 197: Example shot of drain features located along Union Quay (1m scale).

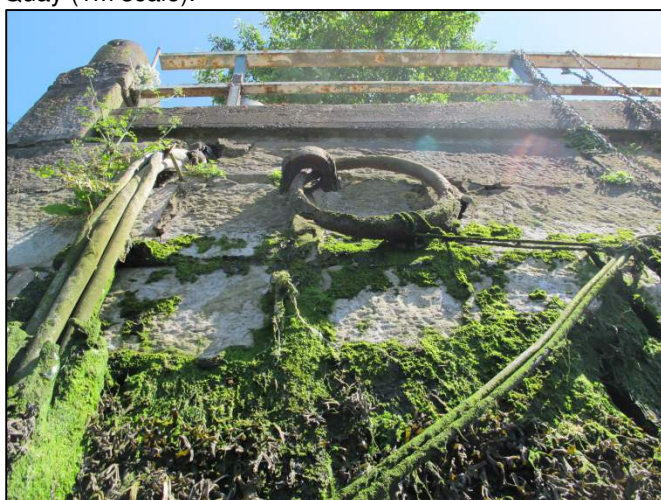


Plate 198: Example shot of mooring-rings located along Union Quay.



Plate 199: East-facing view of river-access steps located at downstream terminus of Union Quay (1m scale).



Plate 200: Northeast-facing view along upstream side of Morrison's Quay.



Plate 201: Northeast-facing view showing the fabric of the quay structure forming Father Matthew Quay and Morrison's Quay (1m scale).



Plate 202: Example shot of timber piles and concrete used to underpin section of Father Matthew Quay/Morrison's Quay (1m scale).



Plate 203: Example shot of timber piles set flush to the quay wall along Father Matthew Quay (1m scale).



Plate 204: Example shot of timber fenders used along Father Matthew Quay/Morrison's Quay (1m scale).



Plate 205: Example shot showing the top components of the timber fenders used along Father Matthew Quay/Morrison's Quay (1m scale).



Plate 206: Example shot showing one of three identical sets of river-access steps located along Father Matthew Quay/Morrison's Quay (1m scale).



Plate 207: Example shot showing one of the rectangular drain features located along Father Matthew Quay/Morrison's Quay (1m scale).

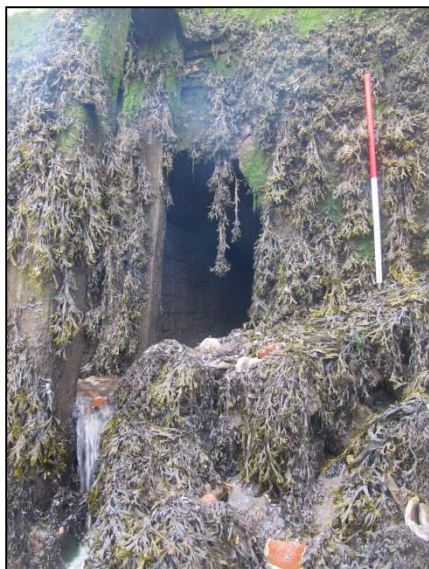


Plate 208: North-facing view of an ached-culvert located Morrison's Quay (1m scale).



Plate 209: East-facing view of the South Channel from Clontarf Bridge showing Lapp's Quay to the north and Terrance MacSweeney Quay to the South.



Plate 210: Example shot of mooring post located at Lapp's Quay (1m scale).



Plate 211: Example shot of one of the mooring bollards located at Lapp's Quay (1m scale).



Plate 212: East-facing view of modern boardwalk development along the downstream side of Lapp's Quay.



Plate 213: South-facing view showing fabric of Albert Quay beneath an adjoin timber wharf (1m scale).



Plate 214: Example shot of one of the mooring bollards located at Albert Quay (1m scale).

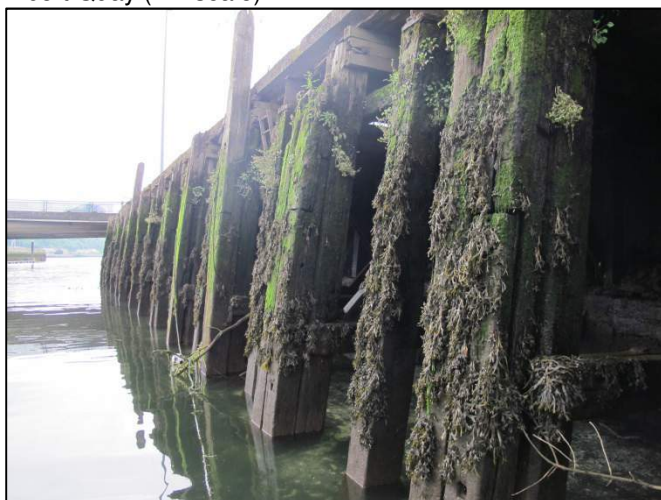


Plate 215: East-facing view along timber wharf located along downstream side of Albert Quay, on the upstream side of Clontarf Bridge (1m scale).



Plate 216: East-facing view of the timber wharfs sub-structure (1m scale).



Plate 217: View along the underside of the timber wharf at Albert Quay.



Plate 218: East-facing view along Albert Quay; shot taken beneath Clontarf Bridge. Note timber fenders running toward the timber wharf in distance (1m scale).

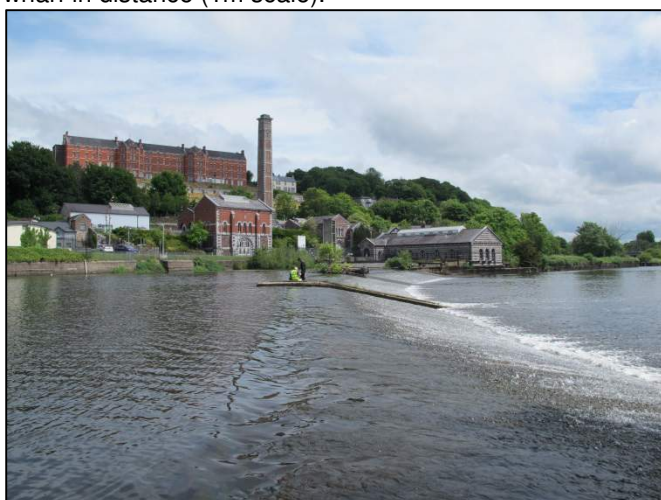


Plate 219: North-facing view along Weir F046.



Plate 220: East-facing view of downstream face of Weir F047.



Plate 221: East-facing view along river wall/ tailrace F048.

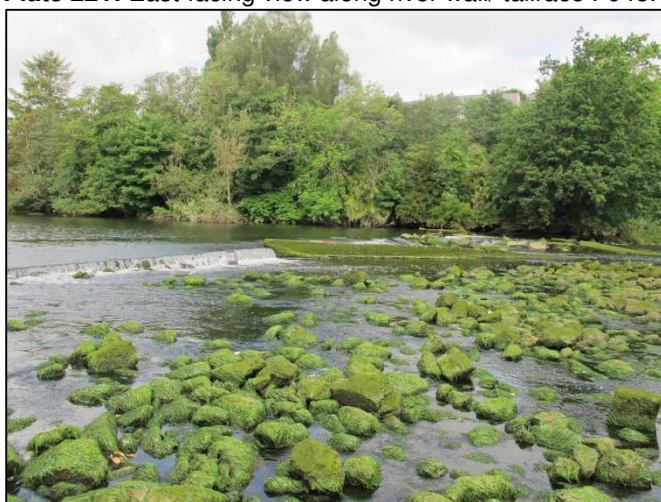


Plate 222: North-facing view along Weir F049.



Plate 223: West-facing view of remains of fish-pass at Weir F049 (1m scale).



Plate 224: North-facing view of remains of Weir F050 (1m scale).



Plate 225: West-facing view of Weir F051 (Gill Abbey Weir).