



Coirib go Cósta

Scéim Faoisimh Tuilte Chathair na Gaillimhe
Galway City Flood Relief Scheme

Board

Public Engagement - Day No.1

2

Overview of the scheme & project area



Historic Flood Risk



© Connacht Tribune

Galway City is exposed to flooding from a variety of sources, including the River Corrib tidal extremes, wind direction, storm surges, overtopping and inflow of stormwater drains. In most cases, these sources of flooding coincide, and their combined effect can cause extensive destruction to property and local life.

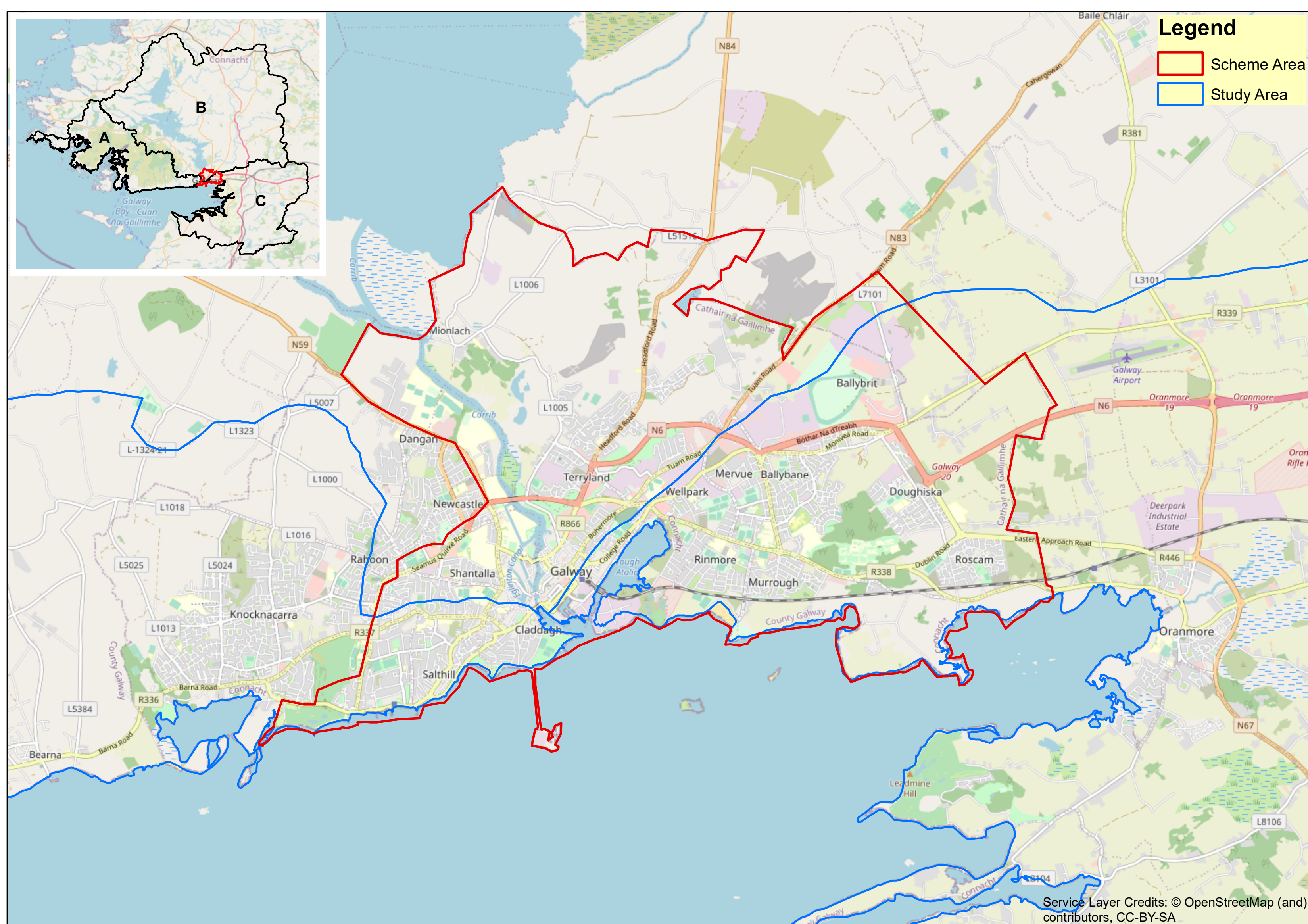
Areas such as Spanish Arch, Quay Street, Flood Street, Father Griffin Road, The Docks Area and the Salthill area have historically been exposed to recurring flooding.

In recent years, severe storms from the Atlantic have resulted in wave overtopping and breaching of local flood defences in the Salthill area, Galway Port and the Docks. In February 2014 and January 2018, the combined effect of high waves, a storm surge, spring tides and high levels in the Corrib resulted in a significant number of properties being flooded.

Scheme Overview

The OPW in partnership with Galway City Council and other Local Authorities have carried out the Western Catchment Flood Risk Assessment and Management (CFRAM) study for the Corrib River Basin.

Figure Indicative scheme area



A. Galway Bay North B. Corrib | C. Galway Bay South East

Galway City was included as an Area for Further Assessment (AFA) and concluded that a flood relief scheme would be viable and effective for the community. As a result, Galway City Council, and the OPW have now commissioned the **Coirib go Cósta** Galway City Flood Relief Scheme.

An indicative scheme area has been identified and the initial stages of the **Coirib go Cósta** have commenced, including Constraints and Opportunities Study and preliminary Design Surveys. The Study Area and Scheme Area for the project are outlined in the map on the left.

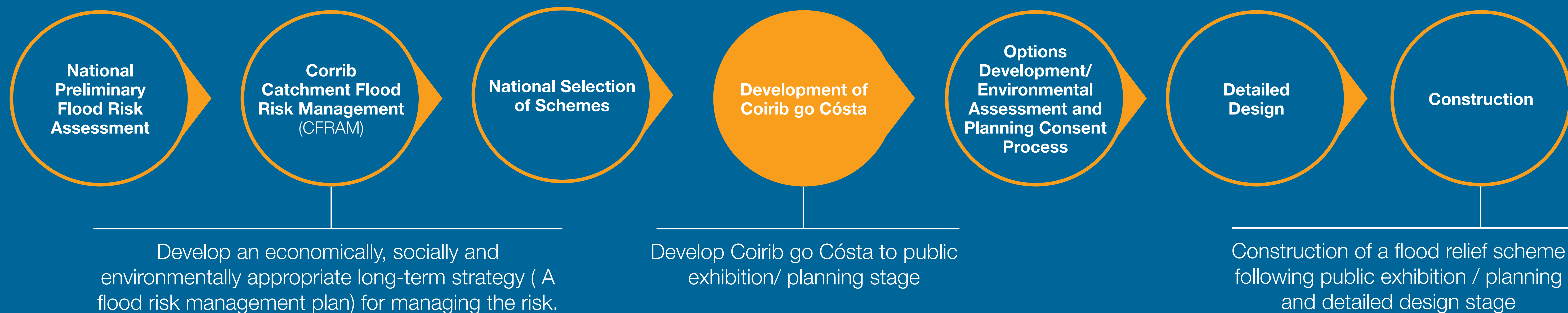
An indicative flow chart showing the process from inception through to construction for the **Coirib go Cósta** project is shown below.

Study Area: Contains lengths of river channel/watercourse that hydraulic influence on the area intended to benefit from, and be protected by, any feasible scheme. Areas that require environmental assessments and full hydrological catchment areas that have an influence in the scheme area watercourses.

Scheme Area: area within which physical works are proposed to be constructed, accessed or maintained as part of any feasible scheme.

Indicative Flow Chart

We are here



Project Objective

The objective of this Project is to assess and develop a Flood Relief Scheme, that is technically, socially, environmentally, aesthetically and economically acceptable, to alleviate the risk of flooding in Galway City.

Current Status

Coirib go Cósta is at an early stage, and GCC in conjunction with the recently appointed engineering and environmental team at Arup, are keen to incorporate the views and knowledge of the local Galway City communities and all interested parties.



Coirib go Cósta

Scéim Faoisimh Tuilte Chathair na Gaillimhe
Galway City Flood Relief Scheme

Board

Public Engagement - Day No.1

3

Opportunities and Constraints



“The Environmental Area is the area within which the environmental and engineering specialists will assess for potential impacts of the scheme.”

What is happening now?

The scheme development is currently at Phase 1 - Identification and Development of Preferred Scheme. Establishing the Constraints Study is currently underway alongside a number of surveys within the scheme area.

Constraints and Opportunities Study

The key environmental constraints and opportunities being considered will at a minimum be those set out in the European Environmental Impact Assessment (EIA) Directive 2014/52/EU including:

- Biodiversity
- Land, soils and groundwater
- Hydrology and water quality
- Air quality
- Climate change
- Noise and vibration
- Population and human health
- Cultural heritage including archaeological and architectural heritage
- Landscape and visual

Some of the environmental constraints defined:

SACs - Special Areas of Conservation (SACs) are designated sites that are recognised for their ecological value at a European level under the EU Habitats Directive (1992/43/EEC).

SPAs - Special Protection Areas (SPAs) are designated areas of habitat for the protection of endangered species of wild birds and Ireland is obliged under the EU Birds Directive (2009/147/EC) to designate such habitats.

Both EU Directives (1992/43/EEC and 2009/147/EC) were transposed into Irish law by the European Communities (Birds and Natural Habitats) Regulations (S.I. No. 477 of 2011). SPA and SAC sites are referred to as ‘**Natura 2000**’ sites.

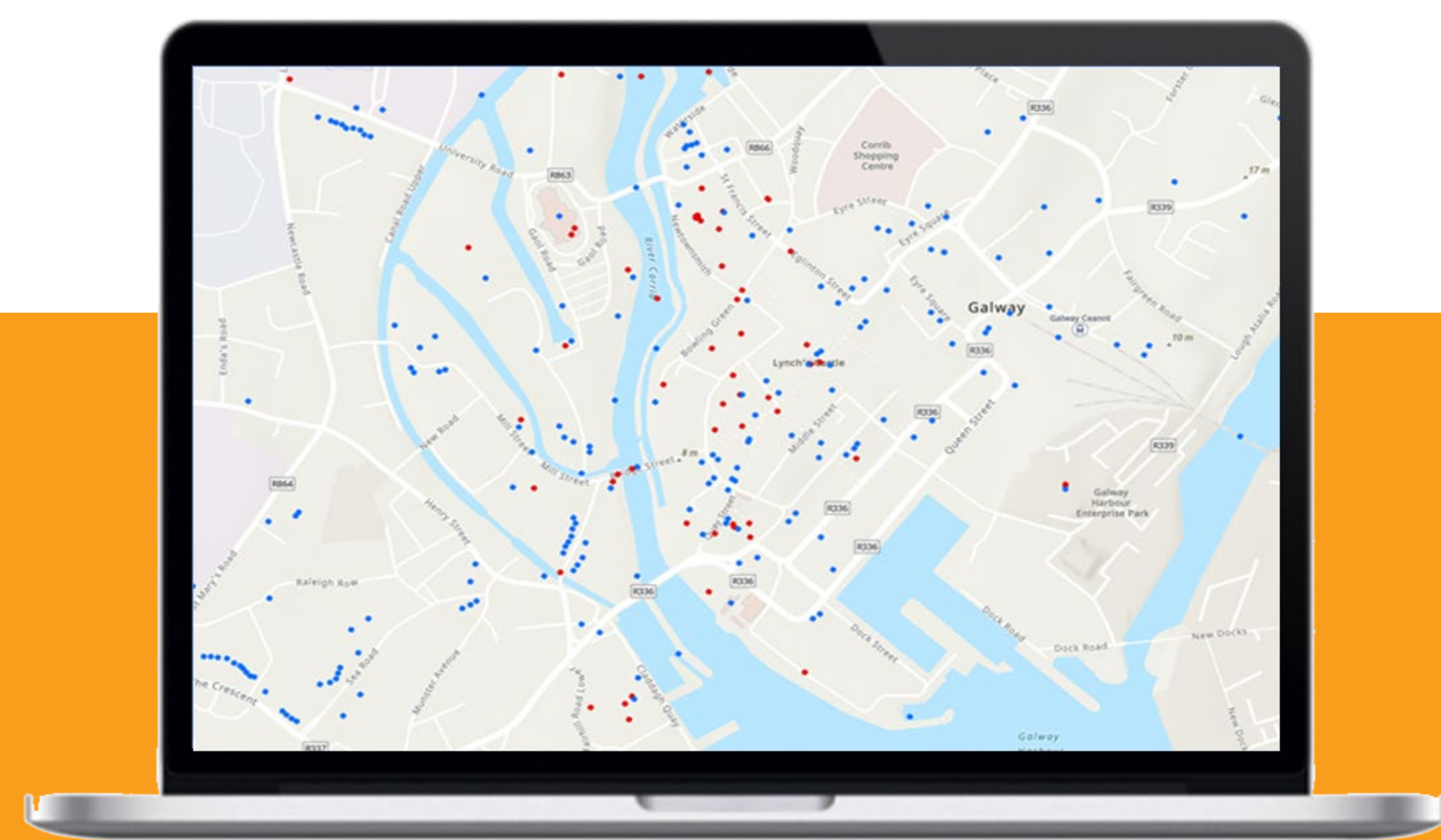
NIAH – National Inventory of Architectural Heritage

The Environmental Study Area

The Environmental Study Area is the area within which the environmental and engineering specialists will assess for potential impacts of the scheme. The extent of the Environmental Study Area will depend on the nature of the constraints being identified. The Environmental Study Area will continue to be defined throughout the stages of the Scheme.

An interactive web mapper is available in this virtual room with all different constraints’ layers. You can have a look at it and turn on and off the different layers and zoom in to your areas of interest, it will look like the example below. Please let us know in the questionnaire available in the room if you have any concerns.

The web mapper can be accessed at www.coiribgocosta.ie



A set of drawings with the individual constraints being assessed is also available. All maps have a legend identifying the constraint and where it is located within the study area.





Coirib go Cósta

Scéim Faoisimh Tuilte Chathair na Gaillimhe
Galway City Flood Relief Scheme

Board

4

Public Engagement - Day No.1

Get Involved Have your say



We are very keen to find out what you think of our plans.

Due to the ongoing response to Covid-19, we cannot hold our usual Public Engagement Day where you could attend person. However, there are still plenty of ways for you to get involved.

Opportunities for you to shape Coirib go Cósta:

Following completion of the Constraints Study, we will develop options for flood relief solutions within the study area.

The second Public Engagement Day will be held once draft options are developed and the public will be invited to give their feedback on the options. This feedback will be incorporated into the final options.

Options will be assessed based on environmental, technical and economic viability, and a Preferred Scheme will be recommended. The Preferred Scheme will be presented to the public at a third Public Engagement Day. Final feedback on the Preferred Scheme will be incorporated into the final design which will be progressed through the planning process.

The statutory consultation will be conducted as required during the planning process.



Constraints & Opportunities

Public Engagement Day NO. 1

Your input to constraints and opportunities to gather information, understand the public's concerns and aspirations for the scheme.

Date: June 2021

Develop options

Public Engagement Day NO. 2

Gain feedback from the public on draft options and incorporate feedback into the finalisation of options.

Date: TBC

Finalise Scheme

Public Engagement Day NO. 3

Present draft Preferred Scheme for final public commentary. The final scheme will be revised to include final public feedback.

Date: TBC



Get involved

The public Engagement Virtual Room will be live for next 5 weeks. You will be able to submit any comments until the 7th of July 2021.

The project website www.coiribgocosta.ie and Galway City Council's social media platforms will be updated regularly with project news so we can bring you along this journey with us.

Follow us on

