



Plate 76: Early twentieth-century photograph of Wise's Quay/ the North Mall with part of St. Vincent's Bridge to left of picture (source: *Cork Camera Club Historical Photographs*, www.corkpastandpresnt.ie).



Plate 77: West-facing view along Wise's Quay, looking toward St. Vincent's Bridge. Note, modern access ladder fitted to quayside.



Plate 78: East-facing view along Wise's Quay (1m scale).

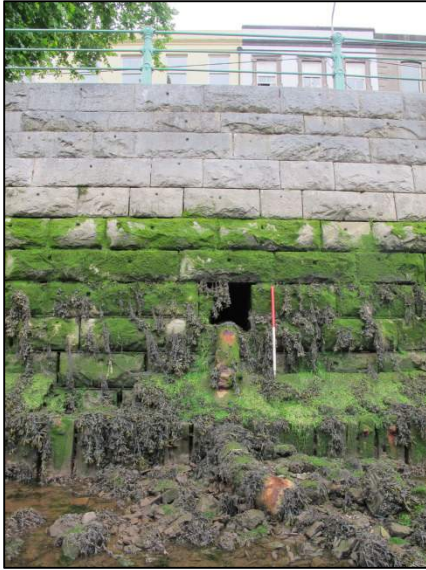


Plate 79: North-facing view of Wise's Quay at location of drain feature showing uniform build using rock-faced ashlar (1m scale).



Plate 80: North-facing view showing the transition point between Wise's Quay and the con-joining North Mall Quay (1m scale).



Plate 81: East-facing view along North Wall Quay (1m scale).



Plate 82: West-facing view along North Wall Quay showing modern consolidation of the quay's foundations.



Plate 83: North-facing view of flight of masonry steps providing river access from the North Wall Quay (1m scale).



Plate 84: Drain feature located beneath the coping stones to provide drainage from the adjacent roadway.



Plate 85: Early twentieth-century photograph of Bachelors Quay with North Gate Bridge in the distance (source: *Cork Camera Club Historical Photographs*, www.corkpastandpresnt.ie).



Plate 86: Southeast-facing view along Bachelors Quay from point downstream of St. Vincent's Bridge.



Plate 87: Southeast-facing view along Bachelors Quay from point approximately mid-point along its extent (1m scale).



Plate 88: Detail view of timber piles and shuttering used to consolidate the quay's in-river foundations (1m scale).



Plate 89: Detail view of original timber piles and shuttering used to underpin the quay's foundations (1m scale).



Plate 90: Southeast-facing showing location of modern quayside repair and collapsed masonry at the base of the quay wall.



Plate 91: Twentieth-century picture showing the length of Pope's Quay (source: *Lawrence Collection*, www.corkpastandpresent.ie).



Plate 92: Northeast-facing view along the quay wall forming Farren's Quay leading onto Pope's Quay (1m scale).



Plate 93: North-facing view showing masonry used to construct the quayside at Farren's/Pope's Quay (1m scale). Note: square profile drain features.



Plate 94: North-facing shot of viewing area built into the quay wall.



Plate 95: East-facing shot of viewing area built into the quay wall (1m scale).



Plate 96: North-facing view of a flight of river access steps located upstream of Shandon Footbridge (1m scale).



Plate 97: North-facing detail view of a mooring ring and drain feature at Pope's Quay (1m scale).



Plate 98: North-facing view of two opposing river access steps located a short distance upstream from the eastern terminus of Pope's Quay (1m scale).



Plate 99: Example of mooring-rings located along Pope's Quay (150mm scale).



Plate 100: East-facing view of upstream section of Kyril's Quay.



Plate 101: South-facing view of section of Kyril's Quay showing use of neat-cut limestone masonry.



Plate 102: Southwest-facing view of upstream flight of river access steps at Kyril's Quay (1m scale).



Plate 103: South-facing view of downstream flight of river access steps at Kyril's Quay (1m scale).

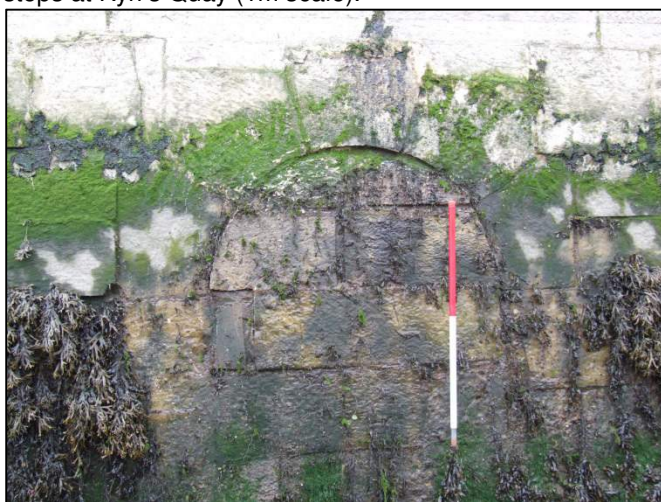


Plate 104: South-facing view of arched culvert located along Kyril's Quay (1m scale).



Plate 105: South-facing view of access slipway located along Kyril's Quay (1m scale).



Plate 106: Early twentieth-century picture showing Pope's/Camden Quay to back and Coal/ Lavitt's Quay in foreground (source: *Lawrence Collection*, www.corkpastandpresent.ie).



Plate 107: Northeast-facing view of Camden Quay on the upstream of Christy Ring Bridge (1m scale).

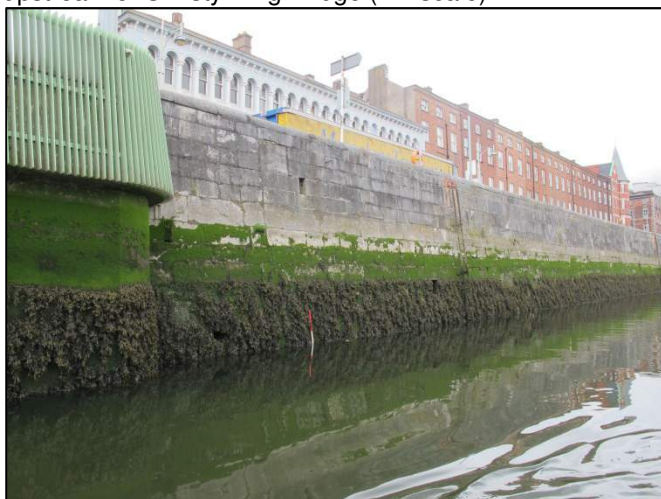


Plate 108: Northeast-facing view of Camden Quay, immediately downstream Christy Ring Bridge (1m scale).



Plate 109: Northeast-facing view of Camden Quay, upstream of St. Patrick's Bridge (1m scale).



Plate 110: North-facing view of Camden Quay showing drain features and modern access ladder (1m scale).



Plate 111: Example shot of drain features located along the High Water Mark at Camden Quay (150mm scale).



Plate 112: Example shot of drain mooring-rings located along Camden Quay (150mm scale).



Plate 113: Northeast-facing view of transition point between Camden quay and St. Patrick's Bridge (1m scale).



Plate 114: Early twentieth-century picture showing Lavitt's Quay to left and Camden Quay to right of picture (source: *Lawrence Collection*, www.corkpastandpresent.ie).



Plate 115: Southwest-facing view of Coal Quay with Shandon Bridge in distance.

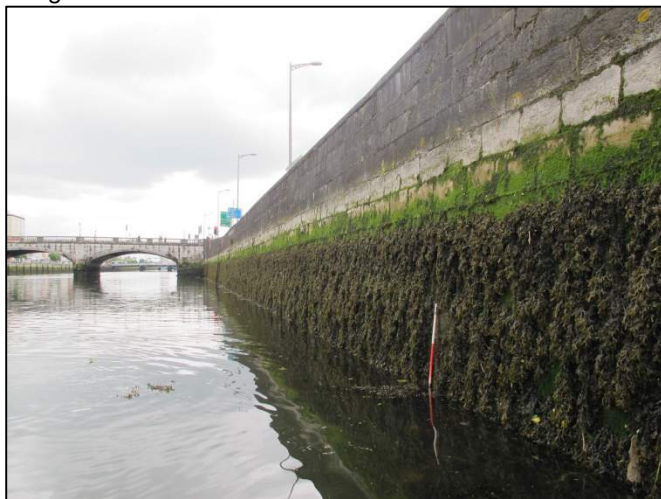


Plate 116: Southeast-facing view of Lavitt's Quay with St. Patrick's Bridge in distance (1m scale).



Plate 117: Southeast-facing view of Coal Quay/ Lavitt's Quay with Christy Ring Bridge in distance (1m scale).



Plate 118: South-facing view of Lavitt's Quay, immediately downstream of Christy Ring Bridge Bridge (1m scale).



Plate 119: Example shot of drain features present along Coal Quay/Lavitt's Quay (150mm scale).



Plate 120: Example shot of mooring-rings present along Coal Quay/Lavitt's Quay (150mm scale).



Plate 121: South-facing view of two sets of steps located a short distance downstream of Shandon Bridge (1m scale).



Plate 122: South-facing view showing arched culvert located between the two flights of steps (1m scale).



Plate 123: South-facing view of two sets of steps located 52m downstream of Shandon Bridge (1m scale).



Plate 124: West-facing view of historic section of St. Patrick's Quay, St. Patrick's Bridge in distance.



Plate 125: East-facing view of historic section of St. Patrick's Quay, Brian Boru Bridge in the distance.



Plate 126: East-facing view of modern section of St. Patrick's Quay, located downstream of Brian Boru Bridge (1m scale).



Plate 127: North-facing showing fabric of St. Patrick's Quay

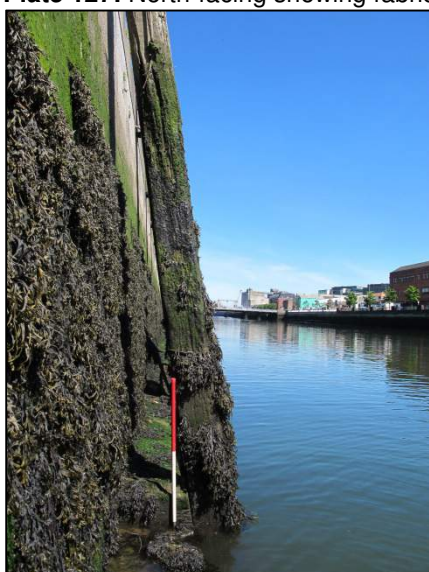


Plate 128: Example shot of the timber fenders that line the historic section of St. Patrick's Quay (1m scale).

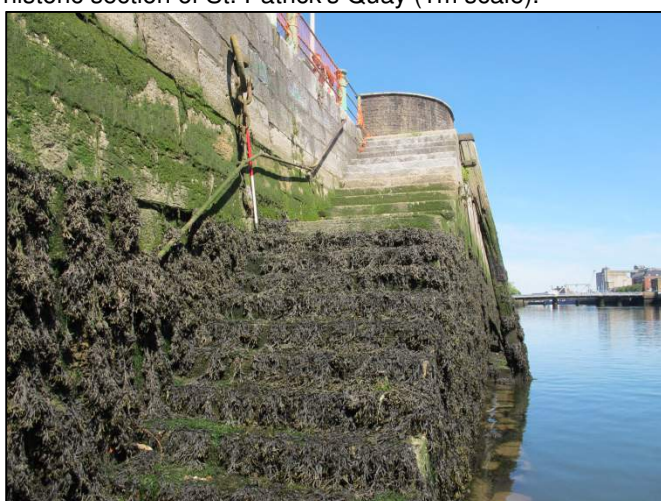


Plate 129: East-facing view of a flight of river access steps located a short distance downstream of St. Patrick's Quay (1m scale).



Plate 130: West-facing view of concrete and timber bracing used to consolidate St. Patricks quay at east end of timber wharf (150mm scale).

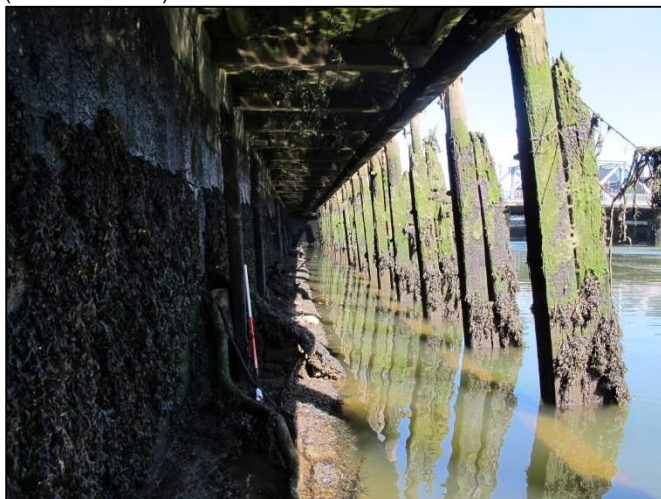


Plate 131: East-facing view along the base of timber wharf located upstream of Brian Boru Bridge (1m scale).

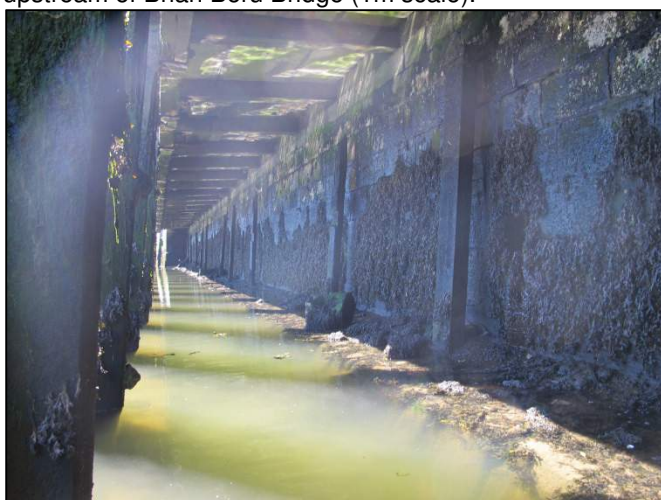


Plate 132: West-facing view along base of timber wharf located upstream of Brian Boru Bridge (1m scale).



Plate 133: Detail shots of incised carpenter marks on timber used in the construction of the timber wharf.



Plate 134: Example shot of one of four cast-iron bollards located adjacent to the Timber wharf on St. Patricks Quay.



Plate 135: Early twentieth century picture taken from Merchant's quay showing Brian Boru Bridge in background (source: www.corkpastandpresent.ie).



Plate 136: South-facing view of large arched-culvert located immediately downstream of St. Patricks Bridge (1m scale).

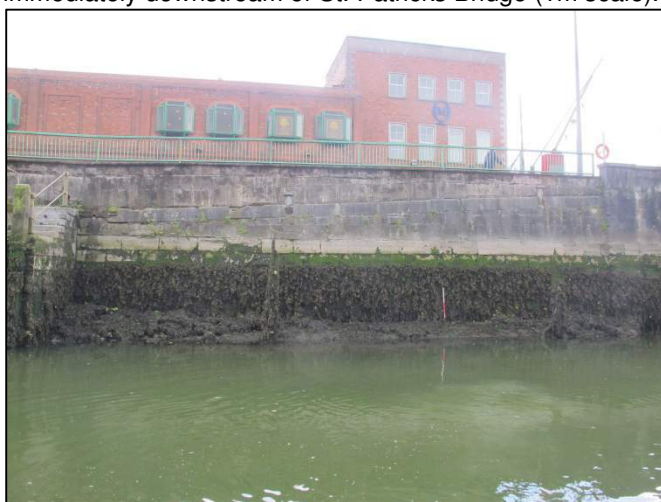


Plate 137: South-facing view of section quay wall forming Merchant's Quay (1m scale).



Plate 138: West-facing view along base of upstream section of Merchant's Quay, St. Patrick's Bridge in background (1m scale).



Plate 139: South-facing of first set of river access steps at Merchant's Quay (1m scale).



Plate 140: Southeast-facing of second set of river access steps at Merchant's Quay (1m scale).



Plate 141: Southeast-facing view of Merchant's Quay leading onto Anderson's Quay (1m scale).



Plate 142: Southeast-facing view of terminus of Merchant's Quay (1m scale).



Plate 143: East-facing view of Anderson's Quay on the upstream side of Brian Boru Bridge.



Plate 144: East-facing view of Anderson's Quay on the downstream side of Brian Boru Bridge.



Plate 145: West-facing view of timber fenders attached to Anderson's Quay on the downstream side of Brian Boru Bridge (1m scale).



Plate 146: East-facing view of Anderson's Quay at a point where the historic masonry terminates and is replaced by a modern concrete quayside (1m scale).



Plate 147: Southeast-facing view of a short section of timber wharf located on the downstream side of Brian Boru Bridge.



Plate 148: East-facing view of underside of timber wharf showing use of cross-braced timbers.



Plate 149: Example shots of incised carpenter's marks located on cross beams from the timber wharf.



Plate 150: West-facing view of river channel with Lancaster Quay to right of picture; leading onto the Western Road in the distance.