

Newsletter

Ballina Flood Relief Scheme



Tionscadal Éireann
Project Ireland
2040



Project Newsletter 2022

Issue 2, July



Comhairle Contae Mhaigh Eo
Mayo County Council



OPW

Oifig na
nOibreacha Poiblí
Office of Public Works



Newsletter

Ballina Flood Relief Scheme



WHAT STAGE IS THE STUDY AT?

In the period since the last Project Newsletter was issued (March 2022) the project steering group (comprising of Mayo County Council, the OPW and RPS) are continuing to ensure that the development of the scheme is based on the most accurate and up to date information.

The hydraulic model is substantially complete. Initial ground investigation works have been carried out.

The RPS Environmental Team are completing additional environmental survey works in areas not previously captured and some additional targeted surveys. These surveys include habitat surveys, mammal surveys, bird surveys and bat surveys.

IMPACT OF COVID-19

The impacts of Covid 19 are continuously monitored. Recent meetings of the Ballina FRS Steering



Group (comprising of the OPW, Mayo County Council and RPS) took place substantially in person with some members attending via video conferencing facilities. It is expected that these face-to-face meetings will continue in 2022 in accordance with government advice. All third-party survey contractors are following the latest government health and safety guidance in relation to COVID19 whilst undertaking the surveys.

HYDRAULIC ANALYSIS

Hydraulic modelling works are substantially complete. RPS is currently in the process of finalising the model and report. This is dependent on the incorporation of some additional topographical survey information in areas not previously surveyed. The additional areas that are potentially at risk of flooding are currently being mapped for the final hydraulic report.

Newsletter

Ballina Flood Relief Scheme

NATURE-BASED CATCHMENT MANAGEMENT (NBCM) STUDY

The NbCM report has been finalised incorporating the comments received from MCC and the OPW. It is intended that it will be issued as part of the Options Development Report. While the measures identified as part of the NbCM are unlikely to form part of the substantive options development for Ballina FRS it may be possible to advance some of the recommendations separately to the flood relief scheme, as part of climate change mitigation measures - E.g., MCC Climate Action Plan.

Topographical Surveys: A contractor was procured to undertake additional topographical surveys required for carrying out detailed design of the flood protection. Field works have been completed and some initial data has been received for review and quality checking. This data is also required to allow completion of the final Hydraulic model and report and the Scheme Analysis and Development.

Scheme Analysis and Development:

The assessment and comparison of the various engineering options to reduce the flood risk in Ballina using the final hydraulic model is nearing completion. Additional topographical information required to allow this element to be completed has been undertaken. All potential options (including the additional areas of flood risk outside the works proposed as part of the CFRAM project) are being assessed using Multi-Criteria Analysis (MCA) with the ultimate aim to identify a preferred scheme for Ballina.

NEXT STEPS

Data Collection: Data Collection is substantially complete. The project team is interested in receiving photos, videos, sketches, or any other relevant information regarding previous flood events from those who have experienced it first-hand, particularly from 2015 onwards. This information will help us to refine our river model and the design of the flood relief scheme. If you have any information which could be of use, please contact us.

Scheme Analysis and Development and Public Consultation:

Once all potential options are assessed using Multi-Criteria Analysis (MCA) the Steering Group will identify a preferred scheme for Ballina. A further public consultation event will be undertaken at this stage and submission received will be considered in the design development. The final preferred scheme will be developed to a sufficient extent to allow the Environmental Impact Assessment process to commence.

Environmental Assessment:

Additional ecological survey work required is ongoing and will continue over the coming months especially in areas not previously assessed. Once the preferred option is finalised the Environmental Impact Assessment will commence.

Newsletter

Ballina Flood Relief Scheme

SCHEME STAGES:

Stage I: Option Assessment, Scheme Development and Design

- Data Gathering /Topographical Survey
- Hydrological Analysis & Hydraulic Modelling
- Option Assessments & Preferred Option Selection
- Environmental Assessment (EIAR)

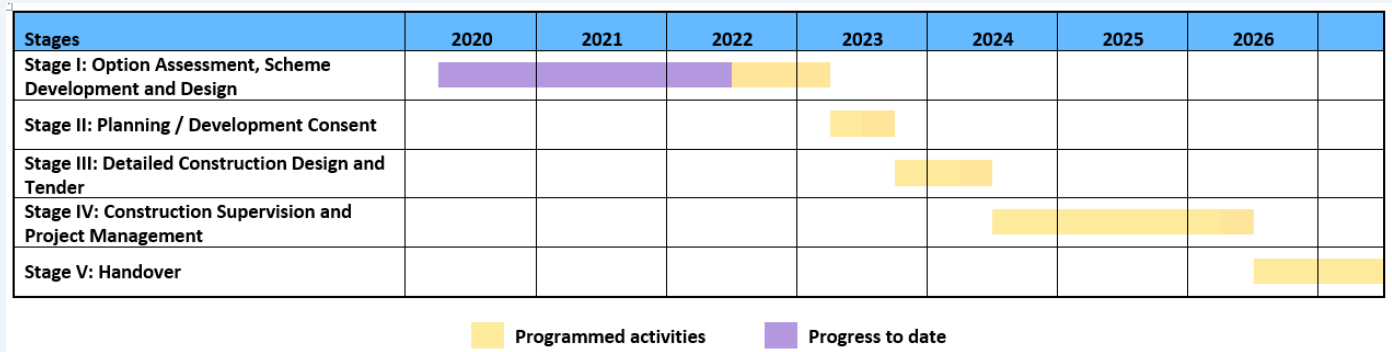
Stage II: Planning / Development Consent

Stage III: Detailed Construction Design and Tender

Stage IV: Construction Supervision and Project Management

Stage V: Handover

OUTLINE PROGRAMME:



Note: Timelines are the current best estimate but are subject to revision and approval

Contact us:

Ballina Flood Relief Scheme Project Manager
RPS Consulting Engineers, Lyrr 2, IDA Business and Technology Park,
Mervue, Galway, H91 H9CK.
Telephone: +353 91 400 200
Email: ballinafrs@rpsgroup.com