

Morrison's Island Public Realm Project

Incorporating Integrated Flood Defences



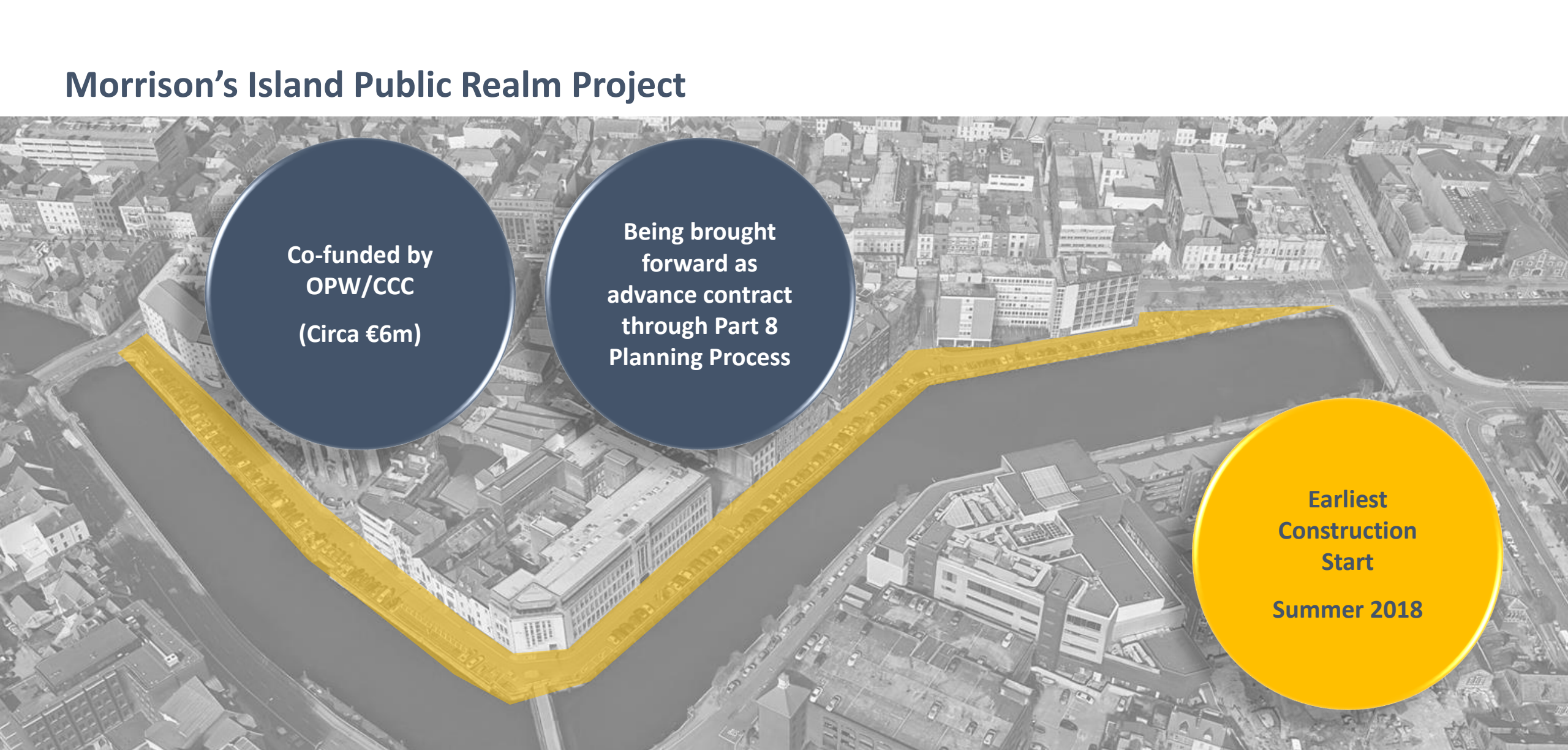
Presentation to
Cork City Council



the paul hogarth company

ARUP

Morrison's Island Public Realm Project



Co-funded by
OPW/CCC
(Circa €6m)

Being brought
forward as
advance contract
through Part 8
Planning Process

Earliest
Construction
Start
Summer 2018



Morrison's Island Public Realm Project



- **Public Realm design developed collaboratively between Arup and The Paul Hogarth Company in conjunction with Alastair Coey, through an iterative process guided by City Architect's Department**
- **High Quality Visual Part 8 documentation to inform public of look and feel of integrated scheme (incl. Video Walkthrough and full scale physical replica of railing and pavement)**
- **Detailed Environmental Assessment has been undertaken.**



Morrison's Island Public Realm Project

Objectives

- ✓ **Integrated Public Realm and Flood Defence Project**
- ✓ **Provide flood protection against tidal flooding**
- ✓ **Fast Implementation**
- ✓ **Enhanced sense of the distinctiveness of the place**
- ✓ **Respect the heritage and history of the area**
- ✓ **Create a high quality, safe and functional environment**
- ✓ **Enhance the experience for pedestrians and cyclists**
- ✓ **Improve river experience**



Requirements & Constraints

- Provide an environment which is safe and enjoyable to use by day and after dark
- Provide flood protection to 1 in 200 standard of protection (as part of overall scheme)
- Refurbish existing quay walls
- Improve entrance to Trinity Footbridge
- Create Plaza on South Mall which people will use for a range of activities
- Cycle parking integrated with limited car parking and improved vehicular circulation
- €6m Budget



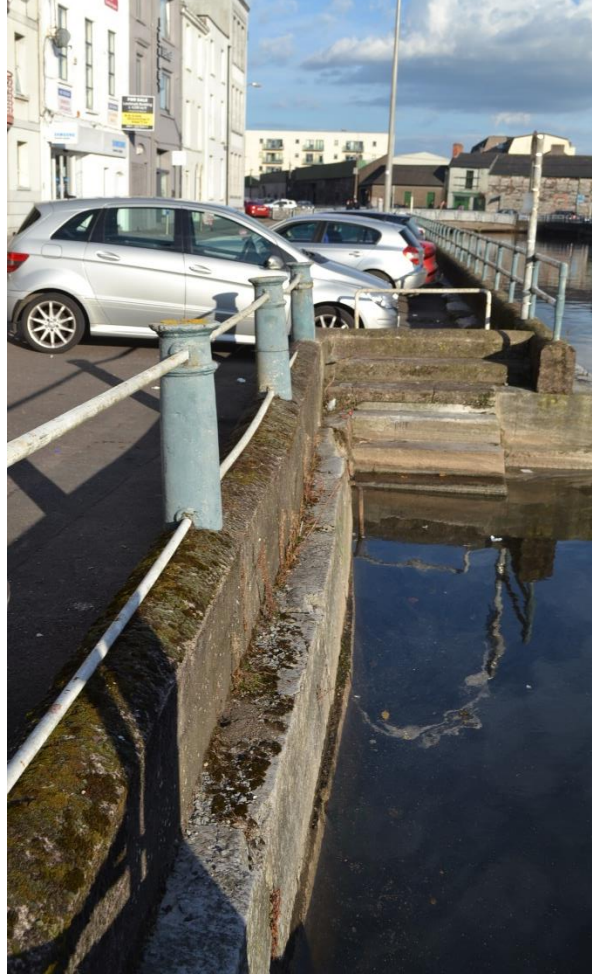
The History of Morrison's Island



The History of Morrison's Island



Morrison's Island Public Realm Project



- Establish a detailed understanding of the heritage significance of the existing environment
- Protect and restore features which are of value
- Enhance the setting of important historic buildings and structures
- Develop the character of the Public Realm to complement the heritage
- Interpretation to be incorporated which tells the rich stories of the area



Interpretation



Interpretation



- Interpretation, based on good research will play a central part in the regeneration of the area
- Draw on international best-practice safeguarding elements of interest and interpreting their significance
- Introduce stories of historical/cultural interest in interesting ways, including art/furniture
- Use signs and panels creatively

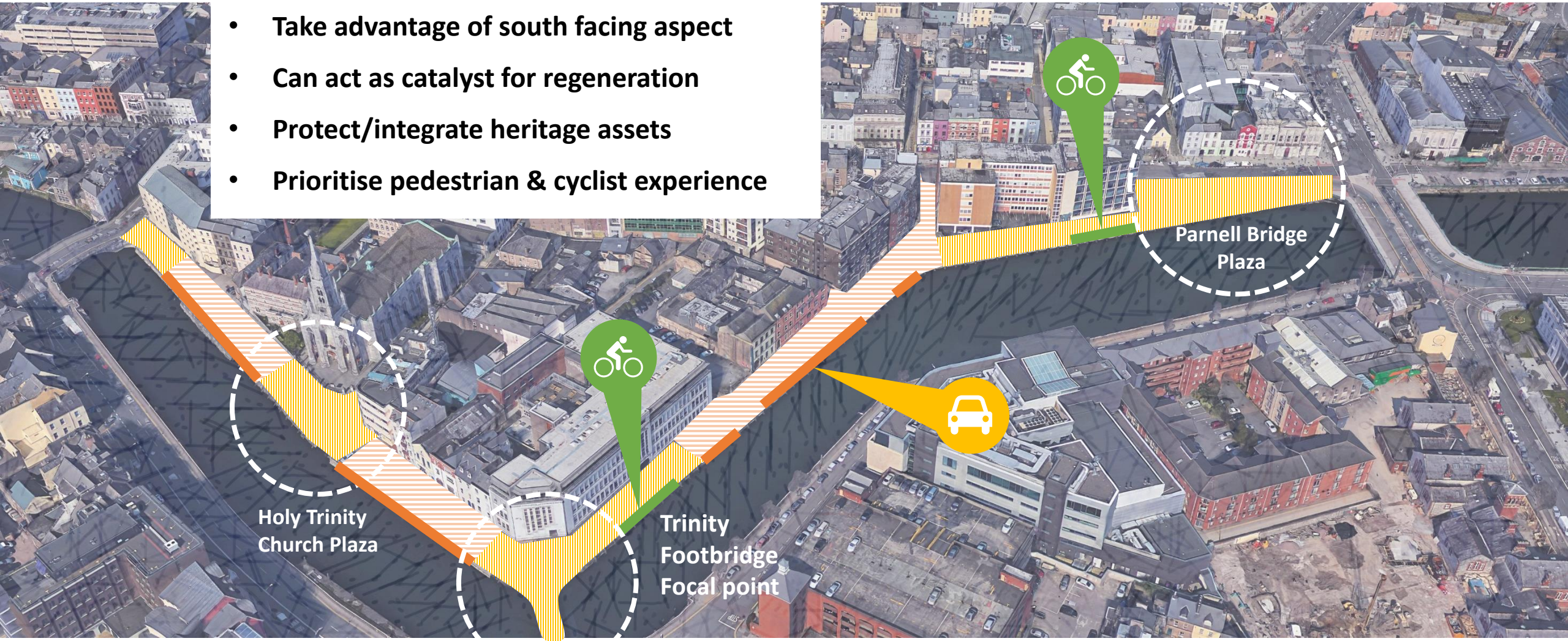


The Use of the Space



Morrison's Island Public Realm Project

- Take advantage of south facing aspect
- Can act as catalyst for regeneration
- Protect/integrate heritage assets
- Prioritise pedestrian & cyclist experience

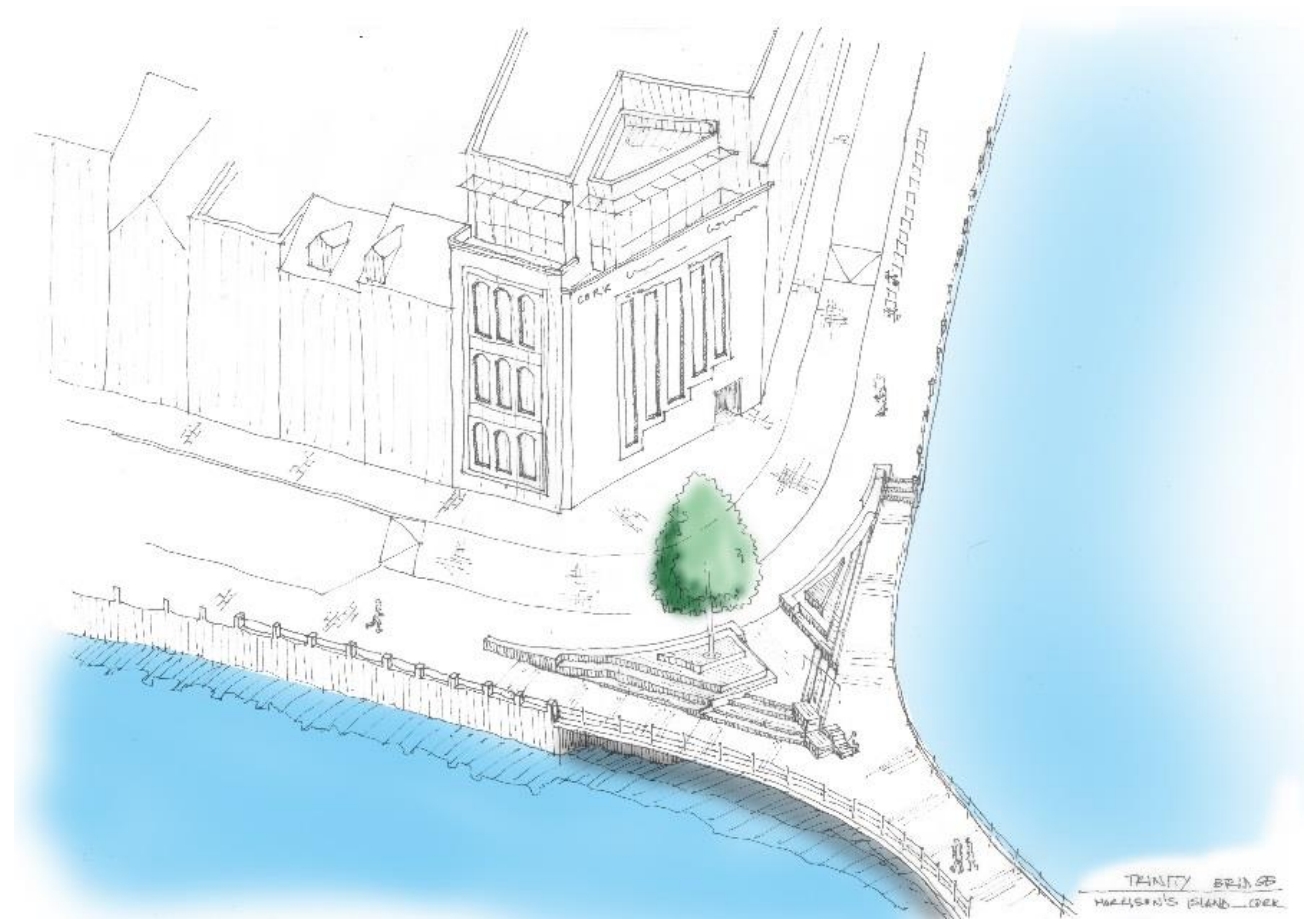
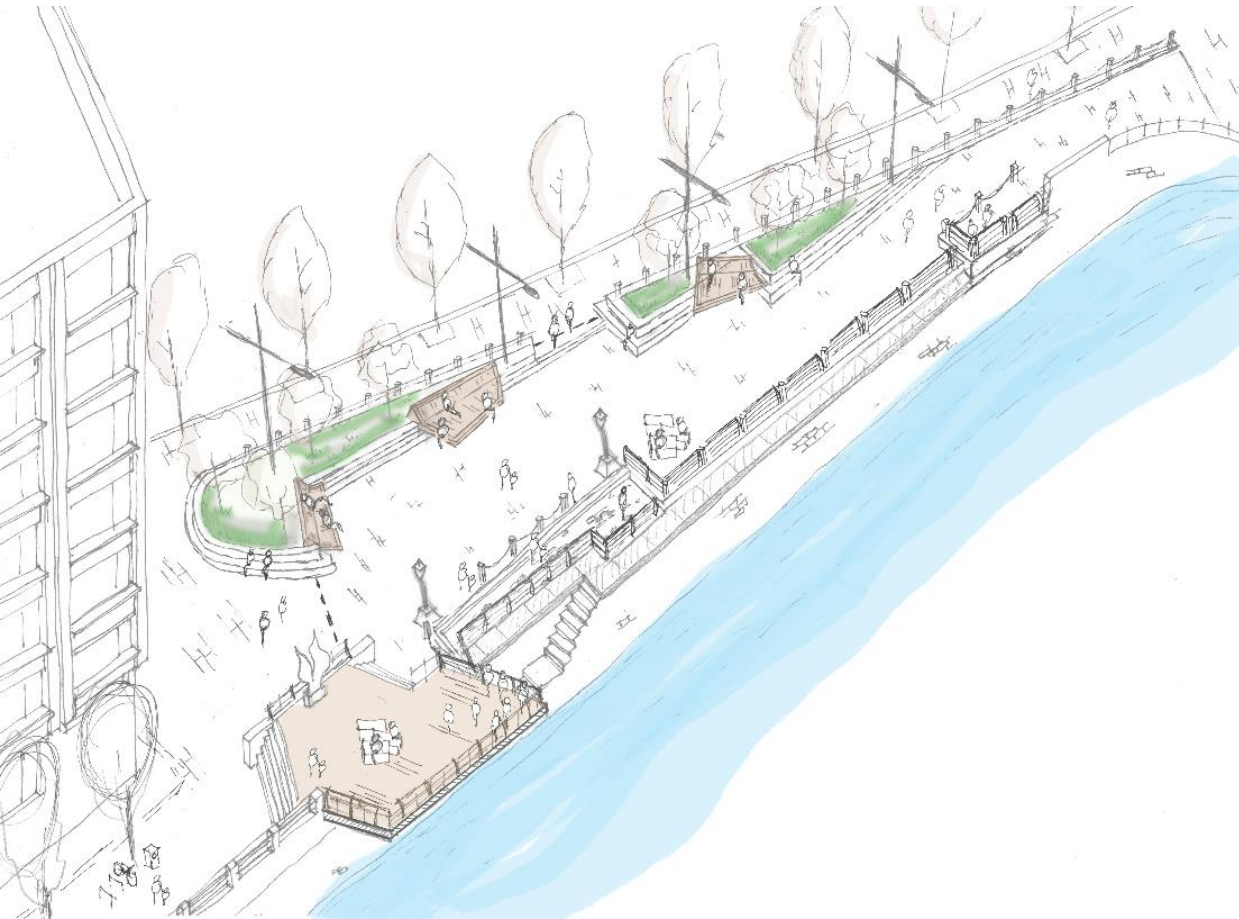


Public Realm Design

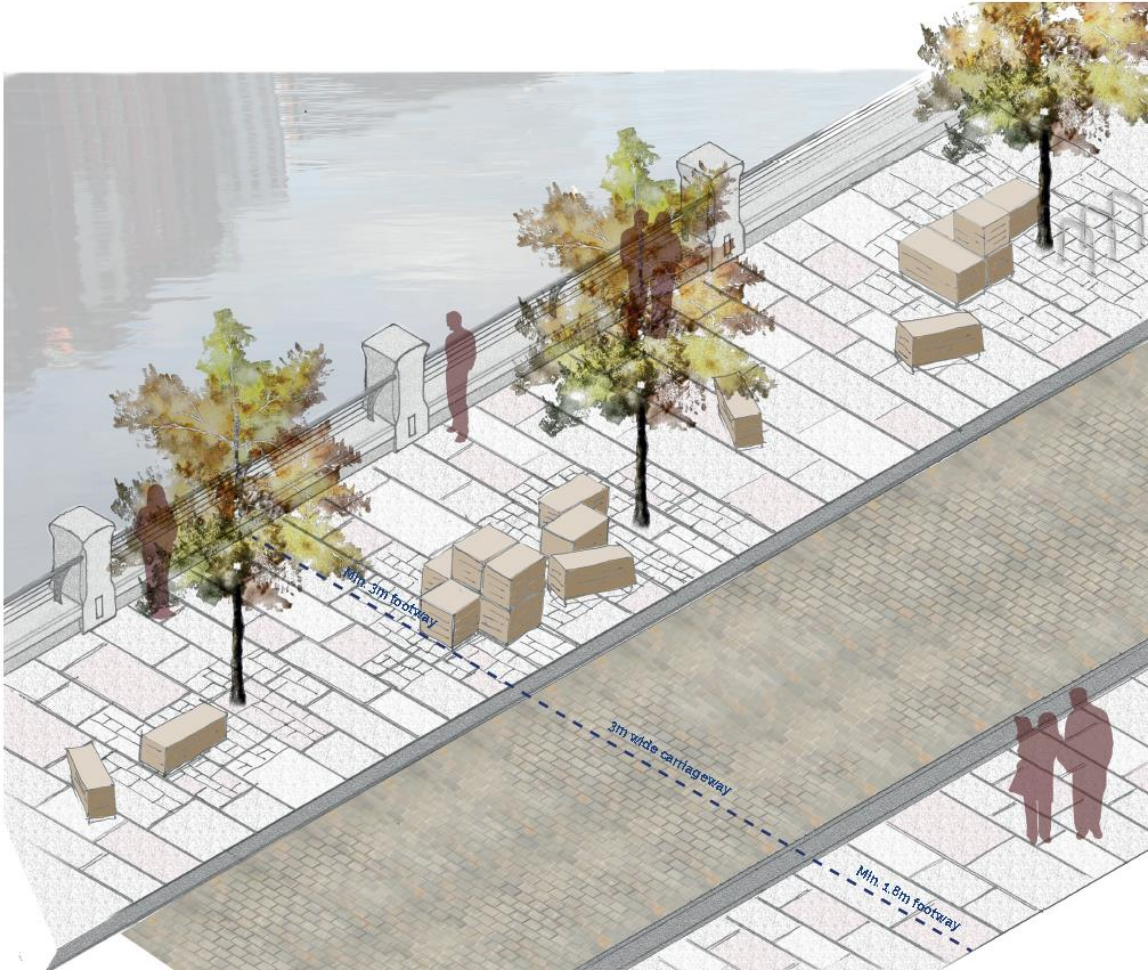


Morrison's Island Public Realm Project

Public Realm Design Concepts



Improving the look and feel of the riverside promenade



- Riverside promenade which is safe and attractive
- Quayside wall/railings provide the required flood protection, addresses issues of public safety and is elegant
- Materials are appropriately robust and are carefully considered in terms of their character
- Street furniture and interpretation consolidate the character and highlight the value of the heritage of the area



Improving the look and feel of the riverside promenade



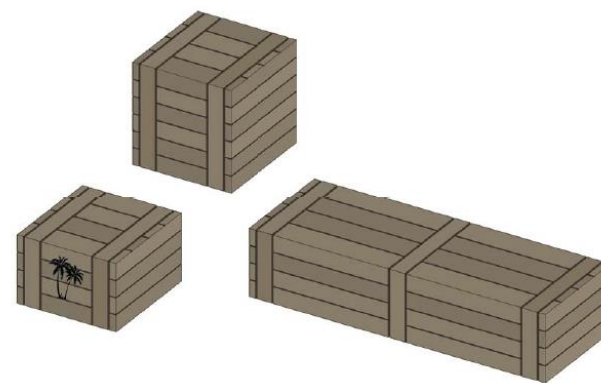
Carefully Selected Materials

WINE
DRIED FRUIT
OLIVE OIL
LIQUORICE
SALT
TANNING AGENTS
BARK
MARBLE

TOLLON
HEMP
FLAX
LINSEED
IRON
HIDES
BRISTLES
ISINGLASS

TIMBER

tobacco



1. Pillar and Coping Stone
Stone on top
(G654 - Mid Grey Granite: Flamed)

2. Footpath
Mix as image
(Silver Grey Mix with Pink Granite: all Bushammered)

3. Carriageway
(Porphyry mix 120mm Band Random Length: Split)

4. Kerbs and Edges
Stone on top
(G684 - Dark Grey Granite)







Draft Work in Progress

Draft Work in Progress





Draft Work in Progress

Draft Work in Progress



Draft Work in Progress





Draft Work in Progress

Morrison's Island Public Realm Project

Incorporating Integrated Flood Defences



thepaulhogarthcompany

ARUP