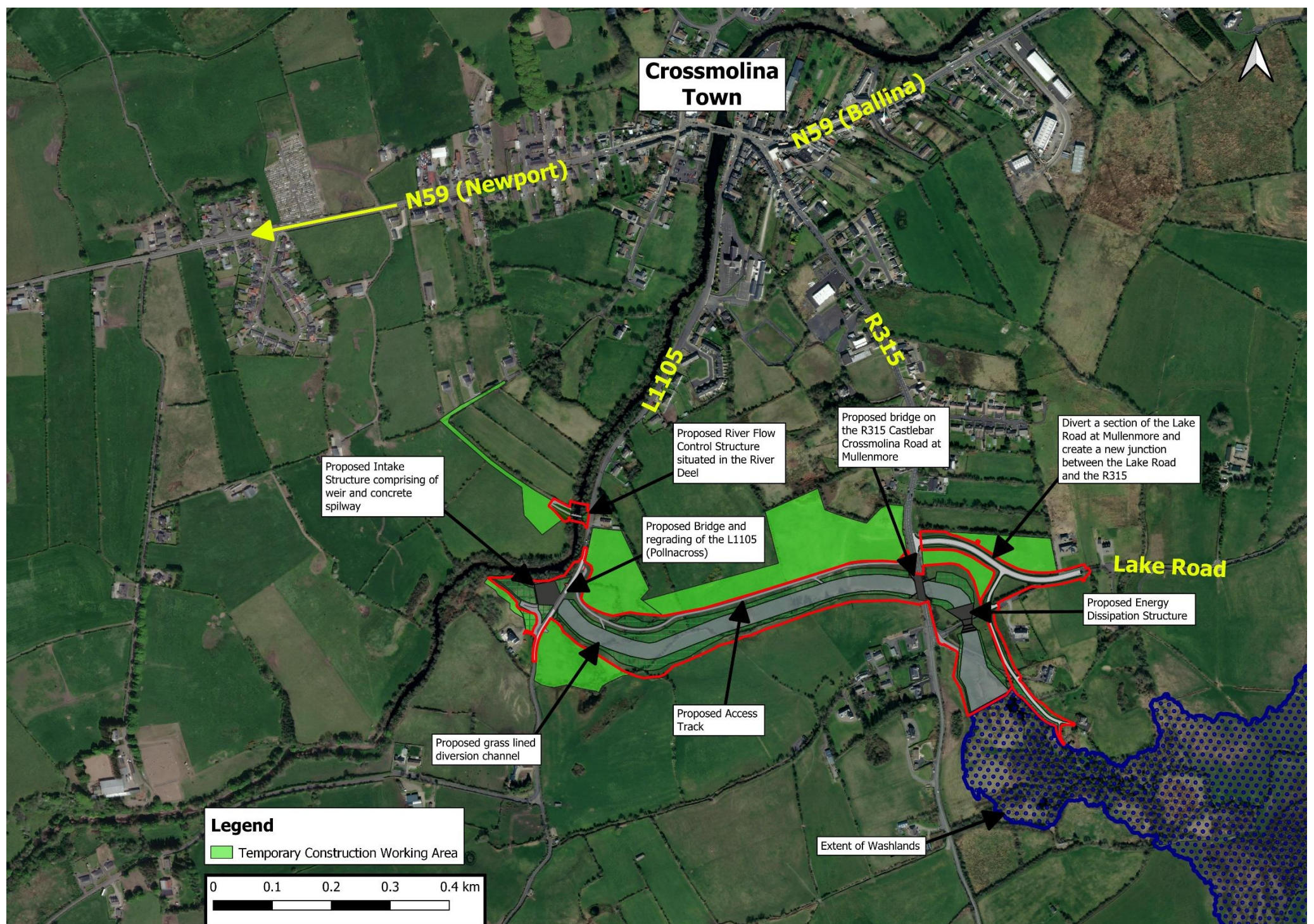


Project Update

Crossmolina (River Deel) Flood Relief Scheme



Scheme Confirmation Update

The Minister for Public Expenditure, National Development Plan Delivery and Reform (DPENDPDR), Mr Paschal Donohoe TD, announced confirmation of the River Deel (Crossmolina) Flood Relief Scheme in early September 2024.

The project, which is designed to protect 73 homes and 43 businesses from severe flooding, is part of the Government's strategy under Project Ireland 2040, funded through the 2030 National Development Plan (NDP), which has allocated €1.3 billion for flood relief measures.

What Happens next?

Following the required statutory process, OPW plan to commence works on the ground towards the end of 2024. Initially, works will consist of archaeological testing and pre-construction surveys, vegetation clearance, and fencing.

Construction of the scheme

The planned works consist of the following:

- A new flow control structure in the channel of the River Deel upstream of Crossmolina Town which will limit the flow in the river to that which will safely pass under Jack Garrett Bridge in Crossmolina Town without resulting in flooding.
- A new 1km long channel the purpose of which will be to convey the excess flood waters directly to Lough Conn and away from Crossmolina.
- The creation of washlands at the downstream end of the channel, between the new channel and Lough Conn.
- The channel will require the construction of an intake structure at the riverbank, two new road bridges, and an energy dissipation structure at the downstream end.
- It will also be necessary to divert the Lake Road and some local property entrances.

How long will the Construction Phase last?

It is expected that the construction phase will take place over four years. The work includes a road diversion, along with five large reinforced concrete structures. The channel alone involves the excavation of $160,000\text{m}^3$ of material. Construction of parts of the scheme in close proximity to the River Deel will be limited due to seasonal environmental restrictions.

Have Environmental Assessments been undertaken?

Yes, extensive field studies and environmental assessments have been undertaken. An Environmental Impact Assessment Report and Natura Impact Statement were submitted with the Scheme Drawings to the Minister for DPENDPDR for Scheme Confirmation. Mitigation measures recommended in the environmental assessments will be implemented during the construction and maintenance phases of the scheme.

Where can I find out more?

The scheme drawings are available to view on the project [website](#) (scan code below). Further information will be uploaded as the scheme progresses.

OPW is also in the process of setting up a Temporary site office in Crossmolina Town. A member of OPW's construction team will be available in the office by appointment to answer queries from the public and stakeholders in relation to the scheme. OPW can also be contacted at the email address info@opw.ie.

