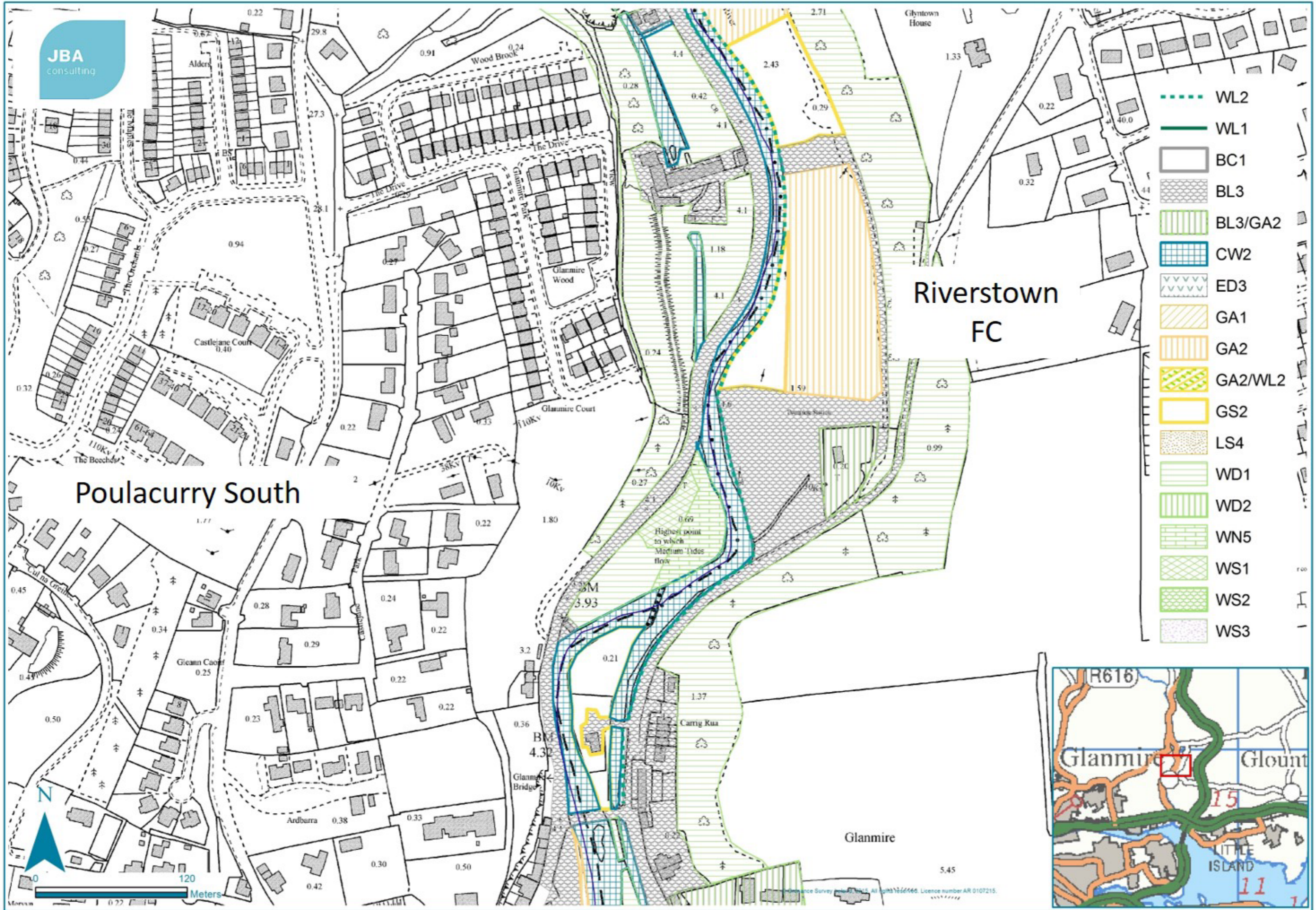
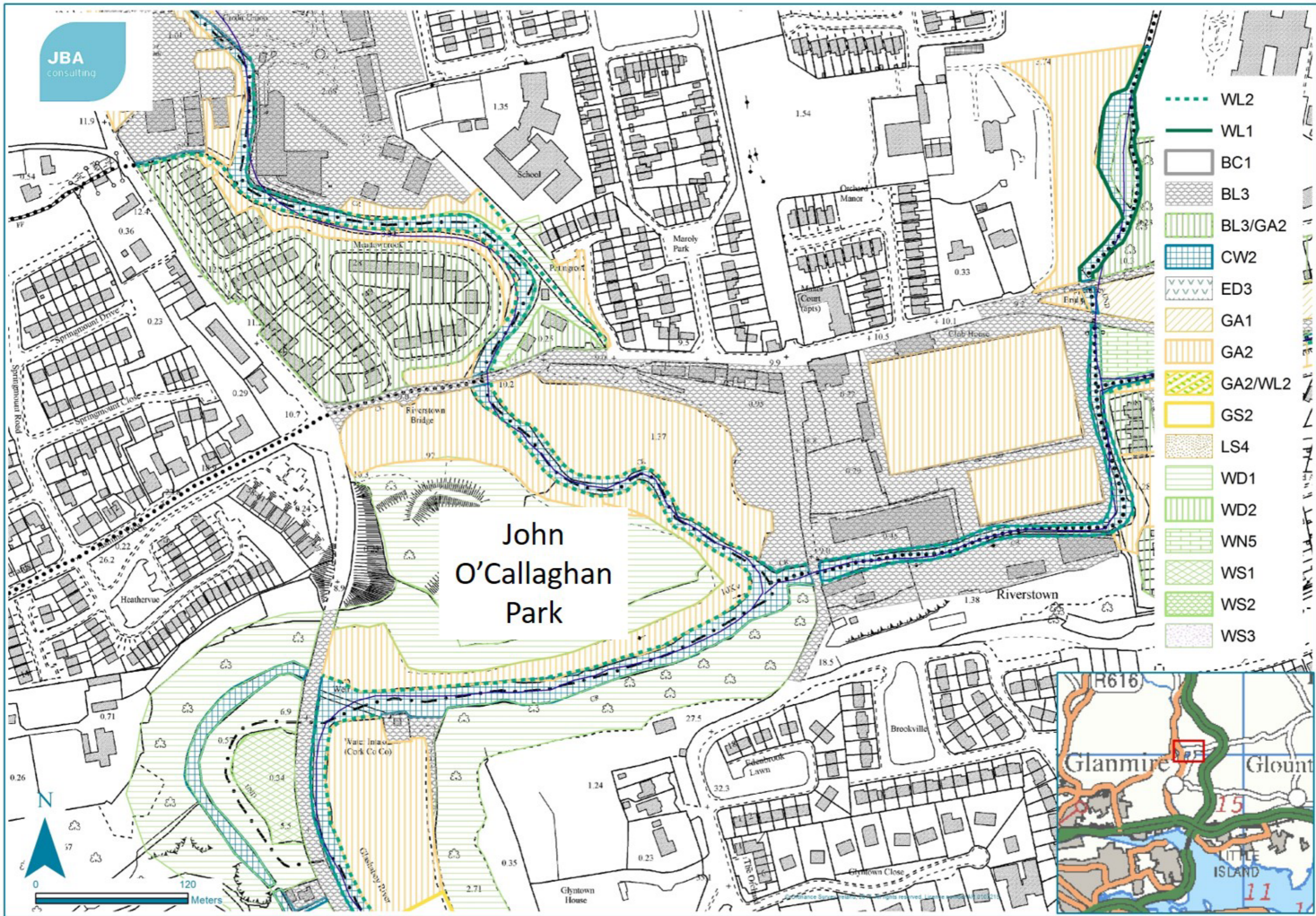


JBA consulting



- WL2
- WL1
- BC1
- BL3
- BL3/GA2
- CW2
- ED3
- GA1
- GA2
- GA2/WL2
- GS2
- LS4
- WD1
- WD2
- WN5
- WS1
- WS2
- WS3



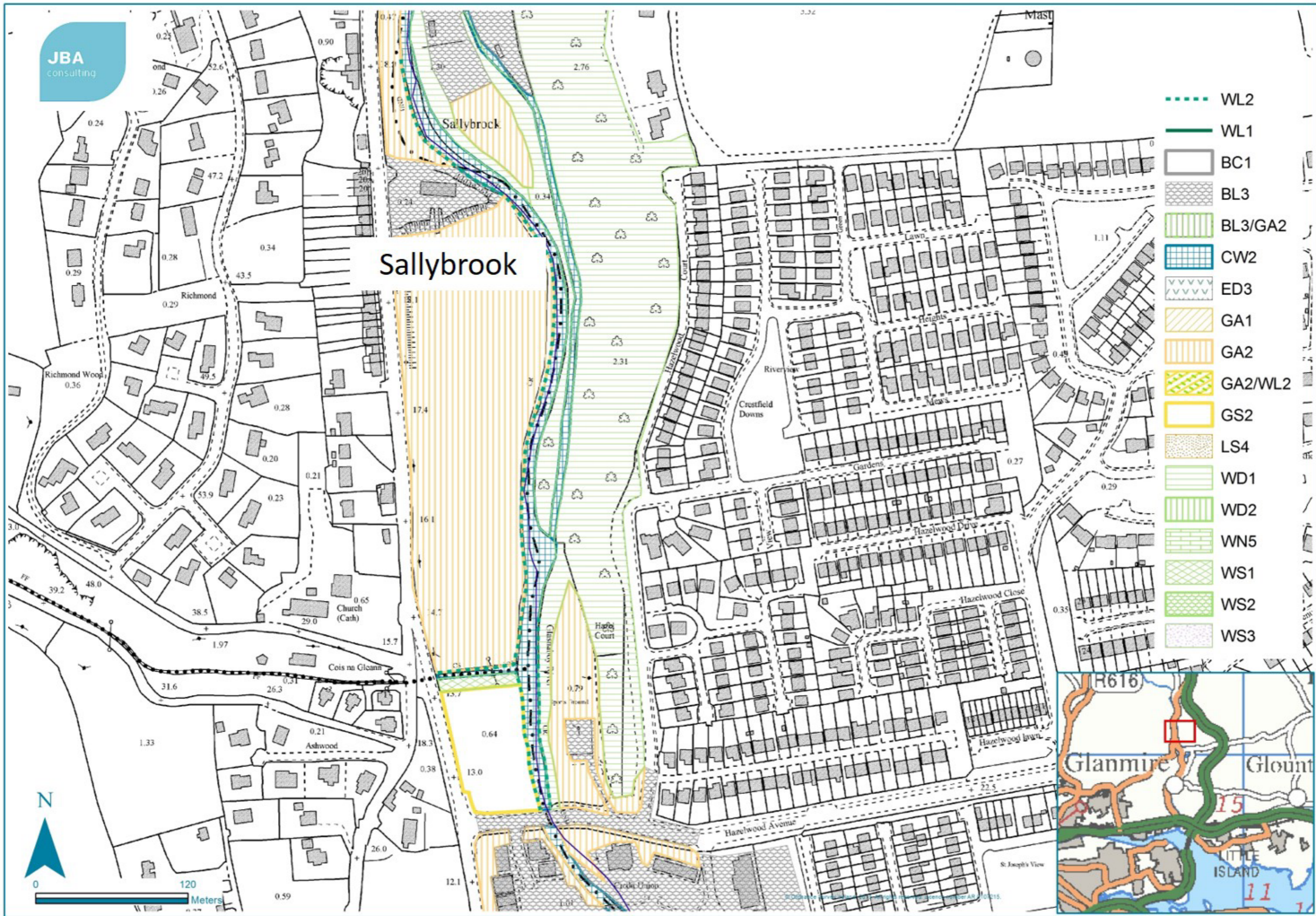


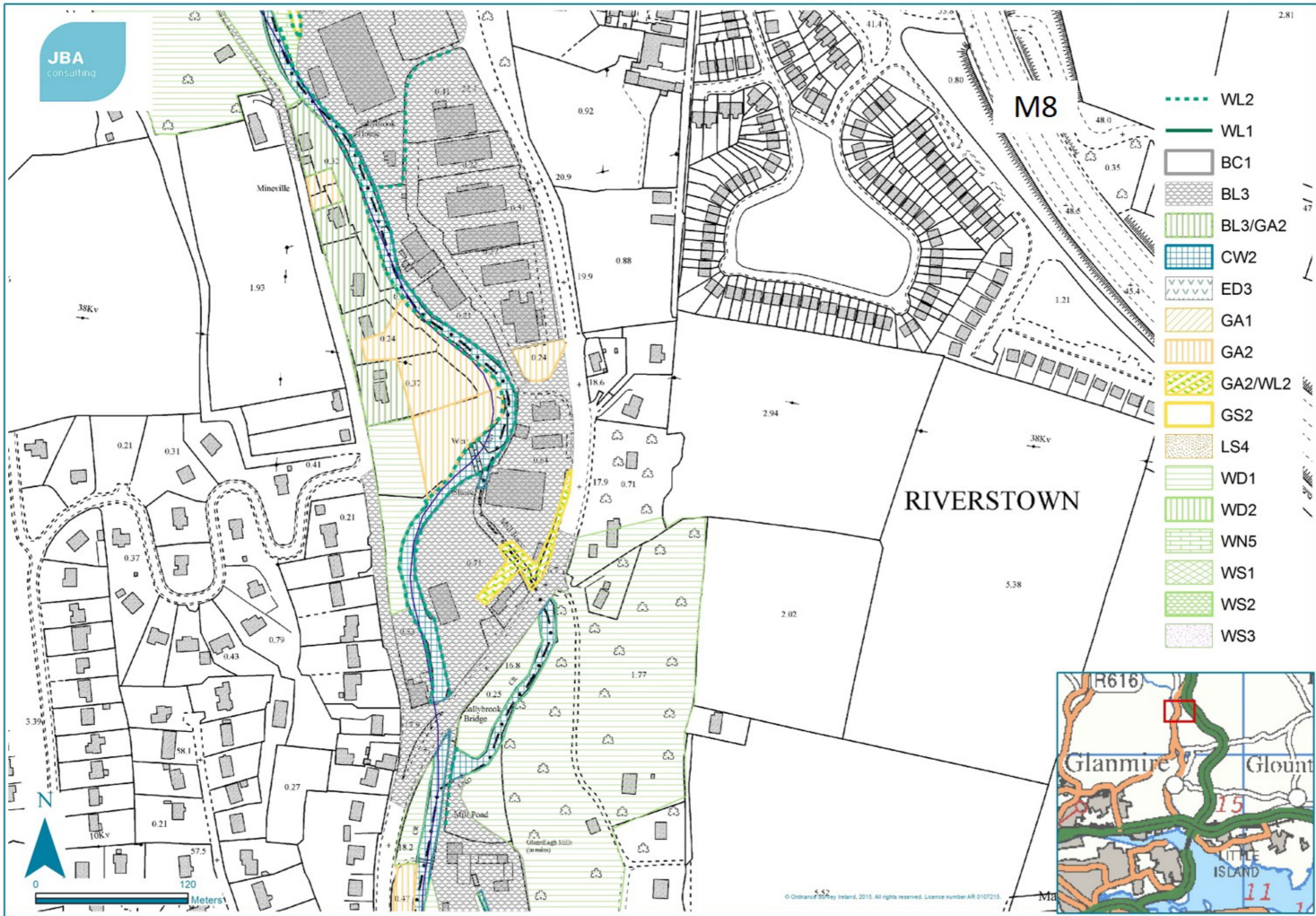
John O'Callaghan Park



Sallybrook

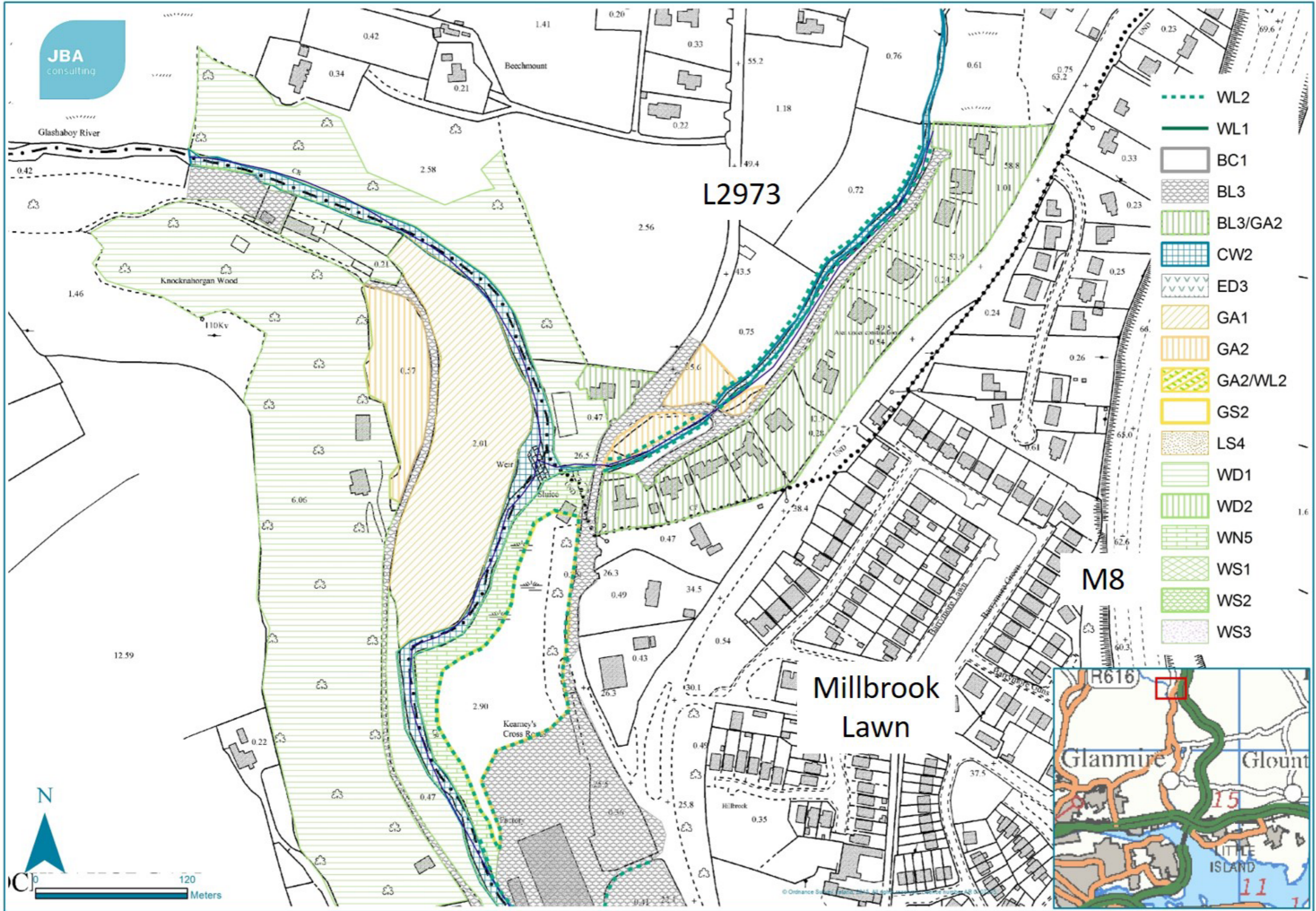
- WL2
- WL1
- BC1
- BL3
- BL3/GA2
- CW2
- ED3
- GA1
- GA2
- GA2/WL2
- GS2
- LS4
- WD1
- WD2
- WN5
- WS1
- WS2
- WS3





- WL2
- WL1
- BC1
- BL3
- BL3/GA2
- CW2
- ED3
- GA1
- GA2
- GA2/WL2
- GS2
- LS4
- WD1
- WD2
- WN5
- WS1
- WS2
- WS3





- WL2
- WL1
- BC1
- BL3
- BL3/GA2
- CW2
- ED3
- GA1
- GA2
- GA2/WL2
- GS2
- LS4
- WD1
- WD2
- WN5
- WS1
- WS2
- WS3

