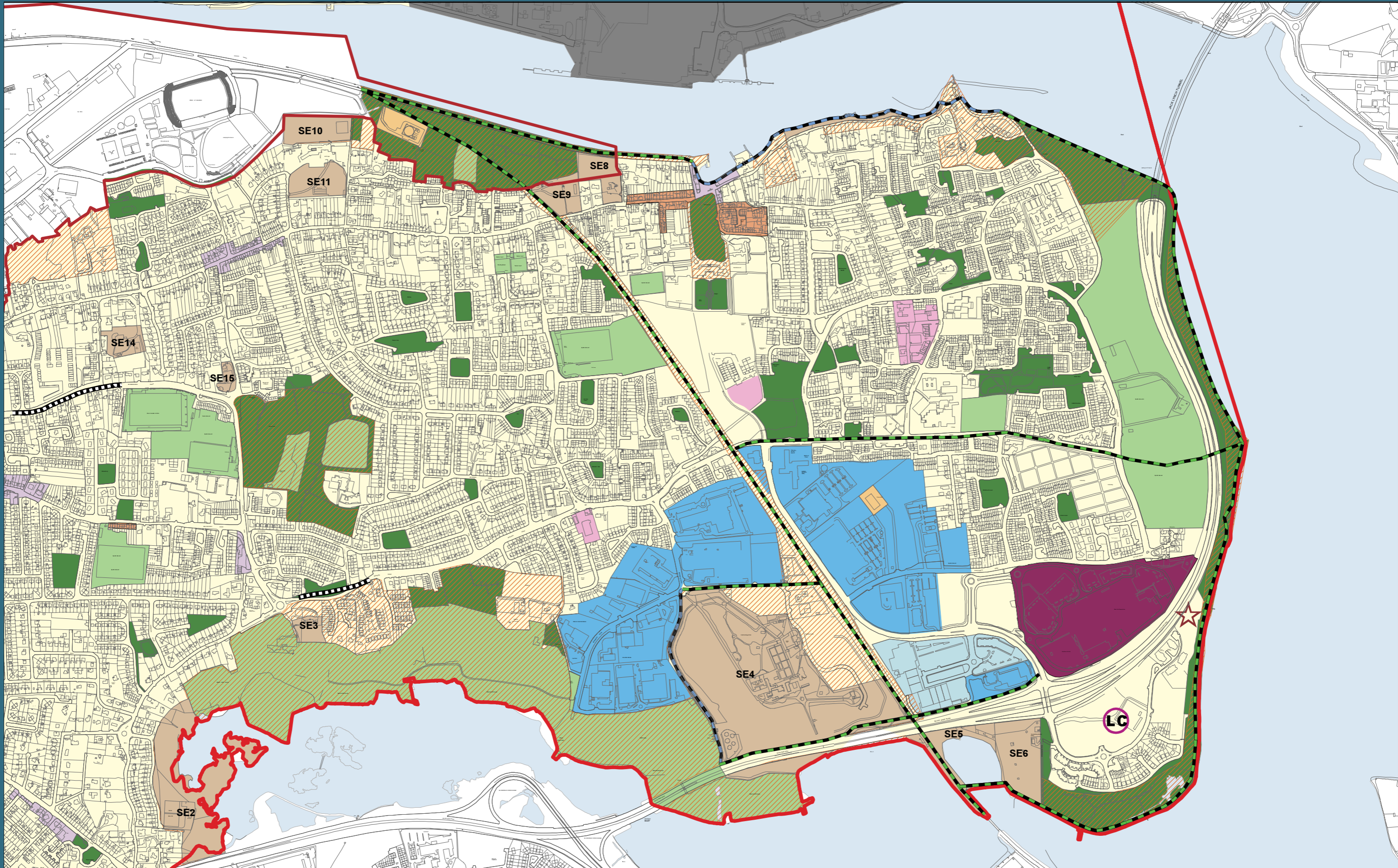
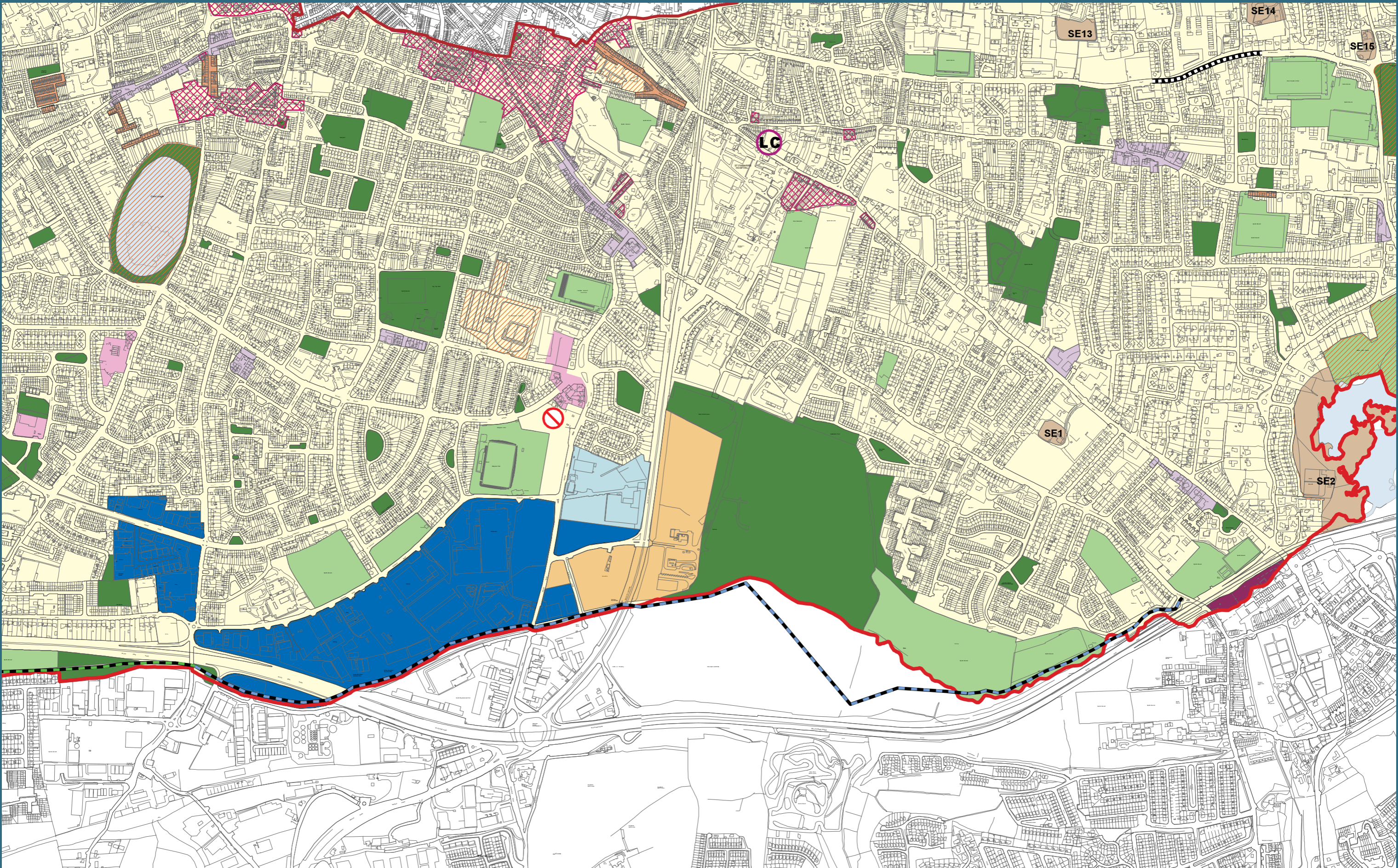


Map 8 - South Eastern Suburbs Objectives



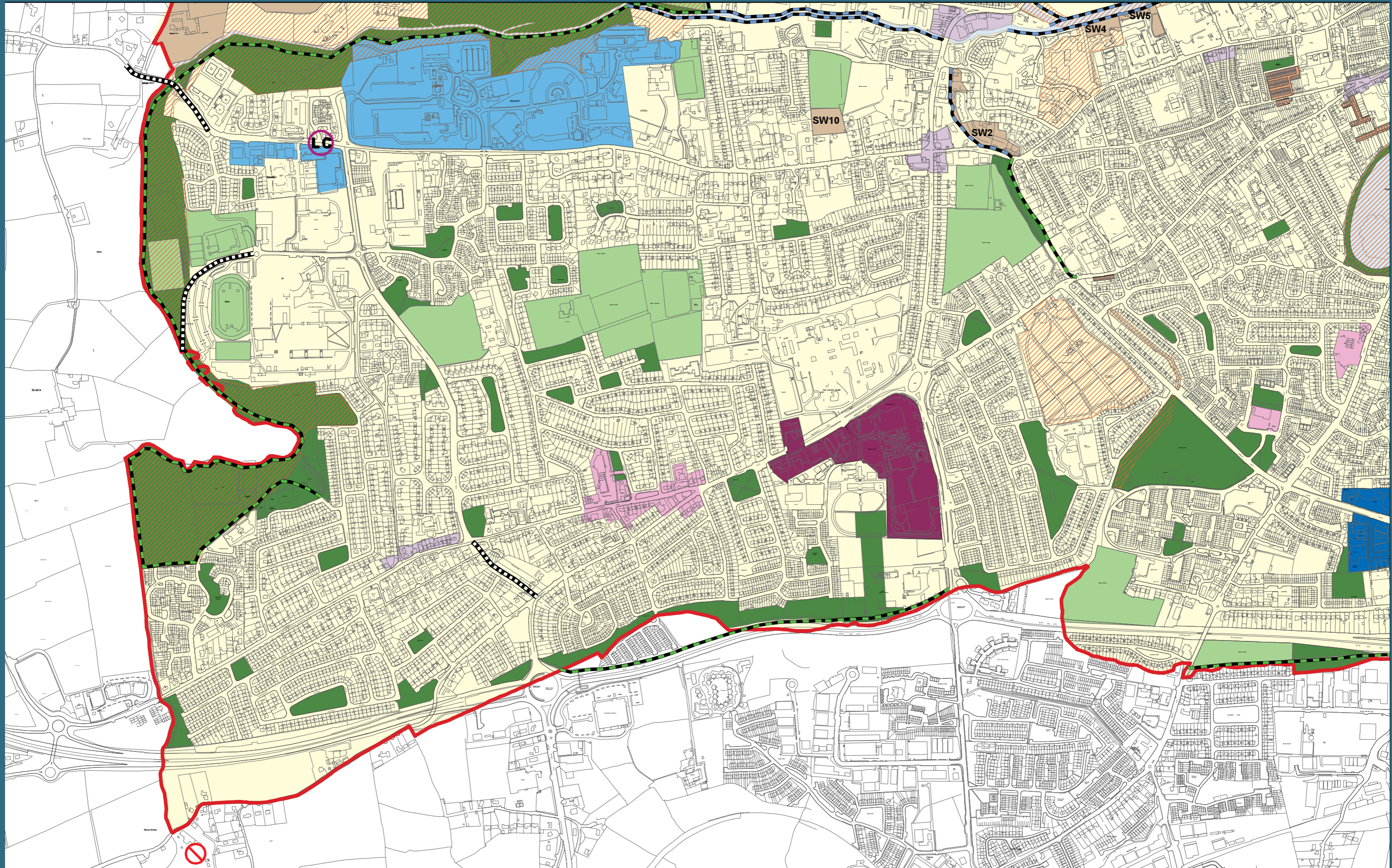
- | | | | | | | |
|--|---|--|---|--|---|--|
|  Indicative Locations for Local Centres |  New Traffic Management System |  Residential, Local Services & Institutions |  Retail Warehousing |  General Industry |  Street Improvement Area |  Waterways Protection |
|  Proposed Primary Schools |  Seveso Site |  District Centre |  Mixed Use |  Areas of High Landscape Value |  Sports Grounds |  Road Improvements |
|  Proposed Railway Station |  Proposed-upgrade Walkways-Cycleways |  Neighbourhood Centre |  Light Industry |  Landscape Preservation Zones |  Public Open Space | |
|  Proposed Tall Buildings Location |  Existing Walkways |  Local Centres |  Business and Technology |  Architectural Conservation Areas |  Public Infrastructure and Utilities | |

Map 9 - South Central Suburbs Objectives



- | | | | | | | |
|--|-------------------------------------|--|-------------------------|----------------------------------|-------------------------------------|----------------------|
| Indicative Locations for Local Centres | New Traffic Management System | Residential, Local Services & Institutions | Retail Warehousing | General Industry | Street Improvement Area | Waterways Protection |
| Proposed Primary Schools | Seveso Site | District Centre | Mixed Use | Areas of High Landscape Value | Sports Grounds | Road Improvements |
| Proposed Railway Station | Proposed-upgrade Walkways-Cycleways | Neighbourhood Centre | Light Industry | Landscape Preservation Zones | Public Open Space | |
| Proposed Tall Buildings Location | Existing Walkways | Local Centres | Business and Technology | Architectural Conservation Areas | Public Infrastructure and Utilities | |

Map 10 - South Western Suburbs Objectives



- | | | | | | | |
|--|-------------------------------------|--|-------------------------|----------------------------------|-------------------------------------|----------------------|
| Indicative Locations for Local Centres | New Traffic Management System | Residential, Local Services & Institutions | Retail Warehousing | General Industry | Street Improvement Area | Waterways Protection |
| Proposed Primary Schools | Seveso Site | District Centre | Mixed Use | Areas of High Landscape Value | Sports Grounds | Road Improvements |
| Proposed Railway Station | Proposed-upgrade Walkways-Cycleways | Neighbourhood Centre | Light Industry | Landscape Preservation Zones | Public Open Space | |
| Proposed Tall Buildings Location | Existing Walkways | Local Centres | Business and Technology | Architectural Conservation Areas | Public Infrastructure and Utilities | |