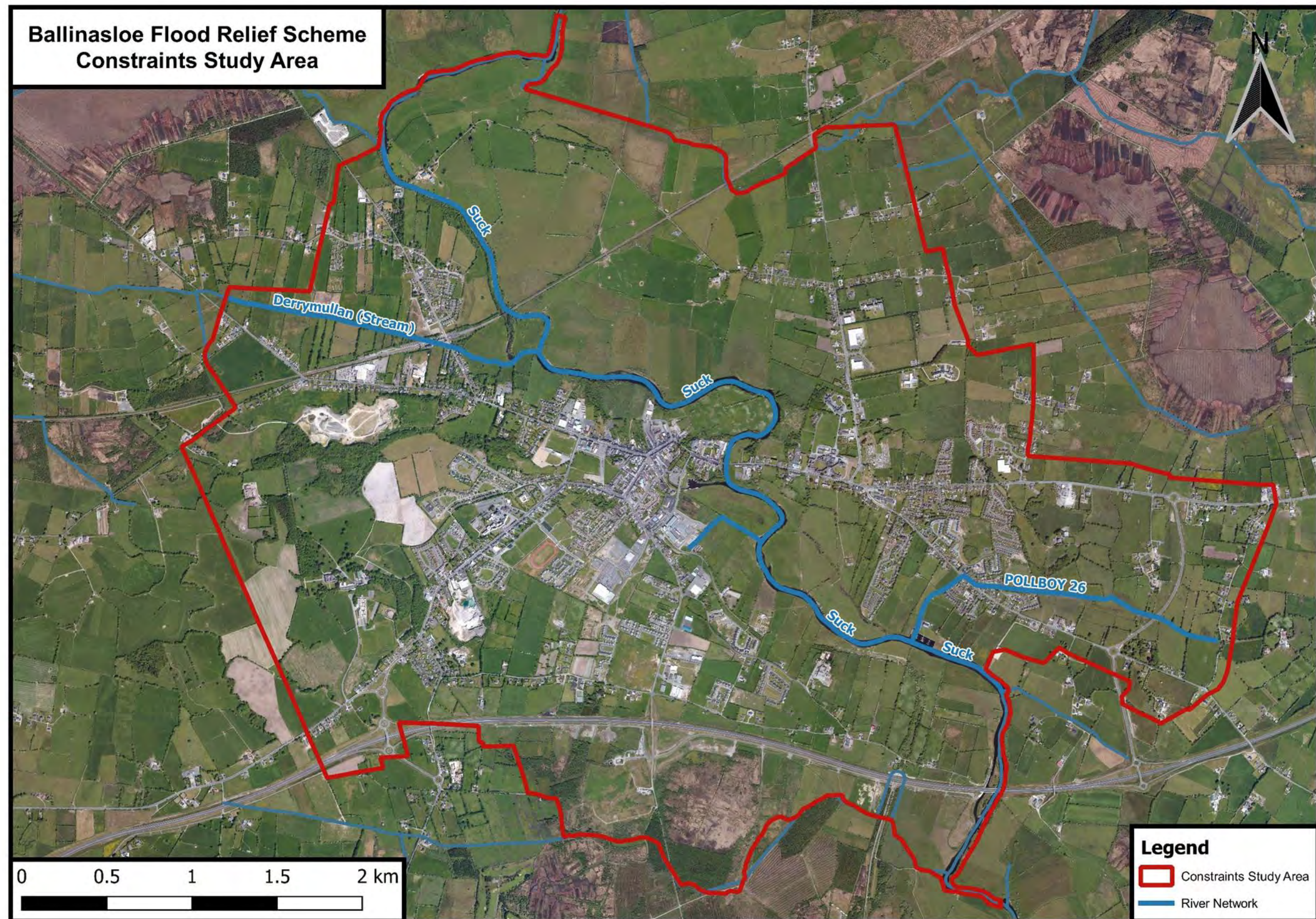


Ballinasloe Flood Relief Scheme



OPW Oifig na
nOibreacha Poiblí
Office of Public Works



Comhairle Chontae na Gaillimhe
Galway County Council

ARUP

**Hydro
Environmental Ltd**

RYAN HANLEY

Ballinasloe Flood Relief Scheme

Constraints Study

A Constraints Study is currently being undertaken by the project Environmental Consultants. The purpose of the Constraints Study is to determine and document potential constraints which will aid the selection and design of the proposed Flood Alleviation measures.

Primary Constraints:

A range of constraints are being considered under the following categories:

- **Biodiversity, Flora and Fauna**
- **Soils and Geology**
- **Water Quality**
- **Archaeological, Architectural and Cultural Heritage**
- **Land Use and Material Assets**
- **Landscape and Visual Amenity**
- **Tourism and Recreational Use**
- **Population and Human Health**



OPW Oifig na
nOibreacha Poiblí
Office of Public Works



Comhairle Chontae na Gaillimhe
Galway County Council

ARUP

Hydro
Environmental Ltd

RYAN HANLEY

Ballinasloe Flood Relief Scheme

Public Involvement

The purpose of this initial Public Consultation Day is to:



- Provide information about the Objectives of the Scheme
- Outline the Design and Statutory Process
- Provide an Opportunity for Comment at a preliminary stage
- Gather information about Environmental Constraints
- Obtain other information relevant to the Scheme

Your local knowledge and opinion is invaluable in helping us to deliver the best possible Flood Relief Scheme for Ballinasloe. Members of the Engineering and Environmental team are available if you wish to tell us about any flood events or environmental issues etc. which are important to you. A questionnaire is available for you to complete and return with your comments.

Consultation will be undertaken throughout the design process to ensure that the views of the public and other stakeholders are taken into account. Following this initial public consultation, there will be further opportunities for involvement through attendance at future Public Consultation days, when updates on the scheme progress will be presented.



OPW Oifig na
nOibreacha Poiblí
Office of Public Works



Comhairle Chontae na Gaillimhe
Galway County Council

ARUP



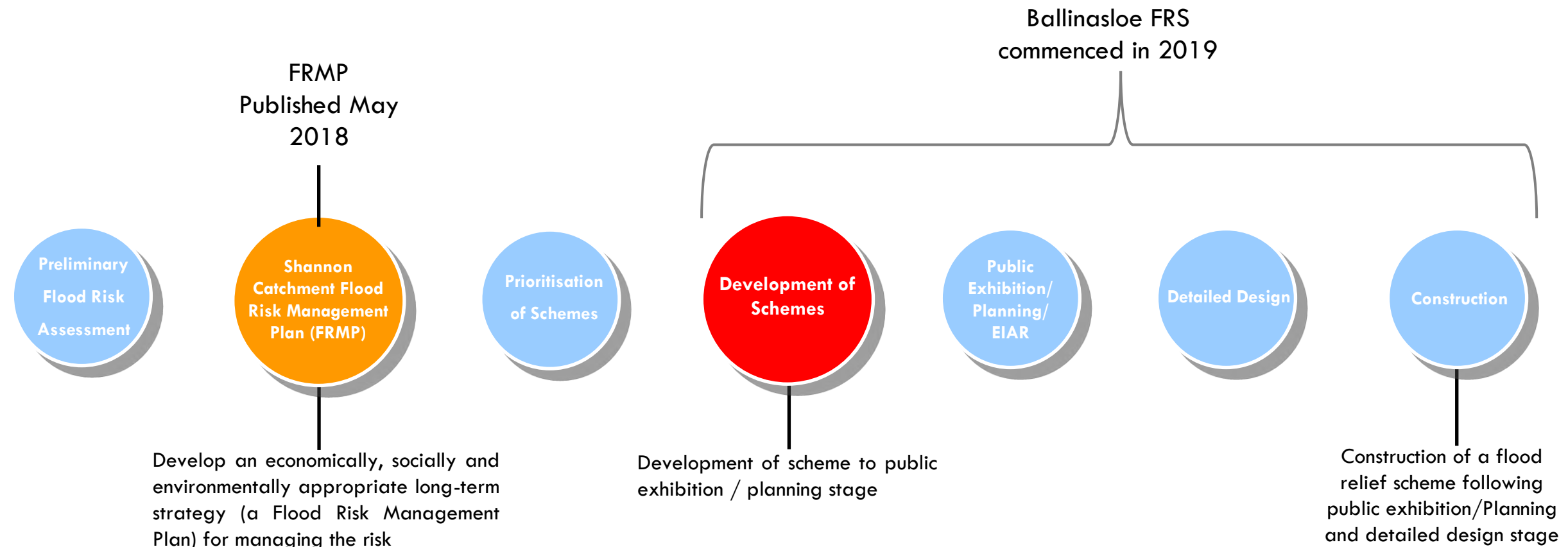
Ballinasloe Flood Relief Scheme

Scheme Objectives & Overview

The Office of Public Works (OPW) have carried out a Catchment Flood Risk Assessment and Management (CFRAM) Study for the Shannon catchment as part of a National CFRAM programme in 2018. The CFRAM Plan set out a range of potential flood risk management options for Ballinasloe.

The OPW has now commissioned Engineering and Environmental Consultants to assess, develop and design a viable and environmentally sustainable Flood Relief Scheme for Ballinasloe.

The Project Team includes the Design and Environmental Consultants working in partnership with the OPW and Galway Co. Council. An indicative scheme area has been identified and the initial stages of the Ballinasloe Flood Relief Scheme have commenced, including Constraints Study and Preliminary Design Surveys. An Indicative Flow chart showing the process from inception through to construction for a flood relief scheme is shown on the figure below:



OPW

Oifig na
nOibreacha Poiblí
Office of Public Works



Comhairle Chontae na Gaillimhe
Galway County Council

ARUP



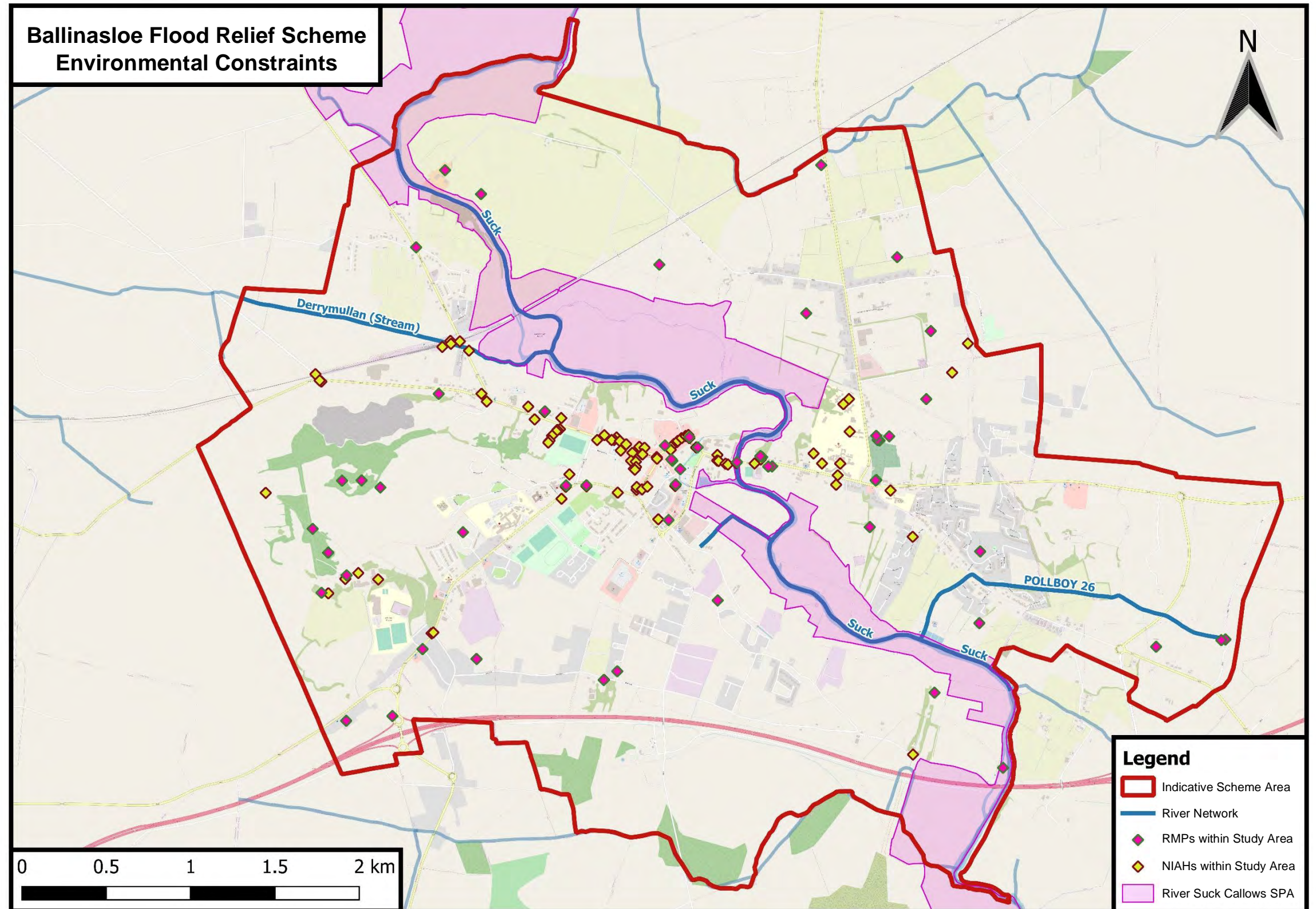
RYAN HANLEY

Ballinasloe Flood Relief Scheme

This map shows the Environmental Constraints within the Constraints Study Area.

These constraints include:

- **RMP:** Recorded Archaeological Sites or Monuments as listed on the Record of Monuments & Places (RMP).
- **NIAH:** Built Heritage as identified and listed on the National Inventory of Architectural Heritage (NIAH) – several of these found in Ballinasloe are also listed in the Record of Protected Structures (RPS) in the Development Plan.
- **SPA:** Ecological Constraints such as Special Protection Areas (SPA). SPAs are marine and terrestrial habitats, including bogs and wetlands, which provide vital breeding and foraging resources for a variety of bird species.



OPW

Oifig na
nOibreacha Poiblí
Office of Public Works



Comhairle Chontae na Gaillimhe
Galway County Council

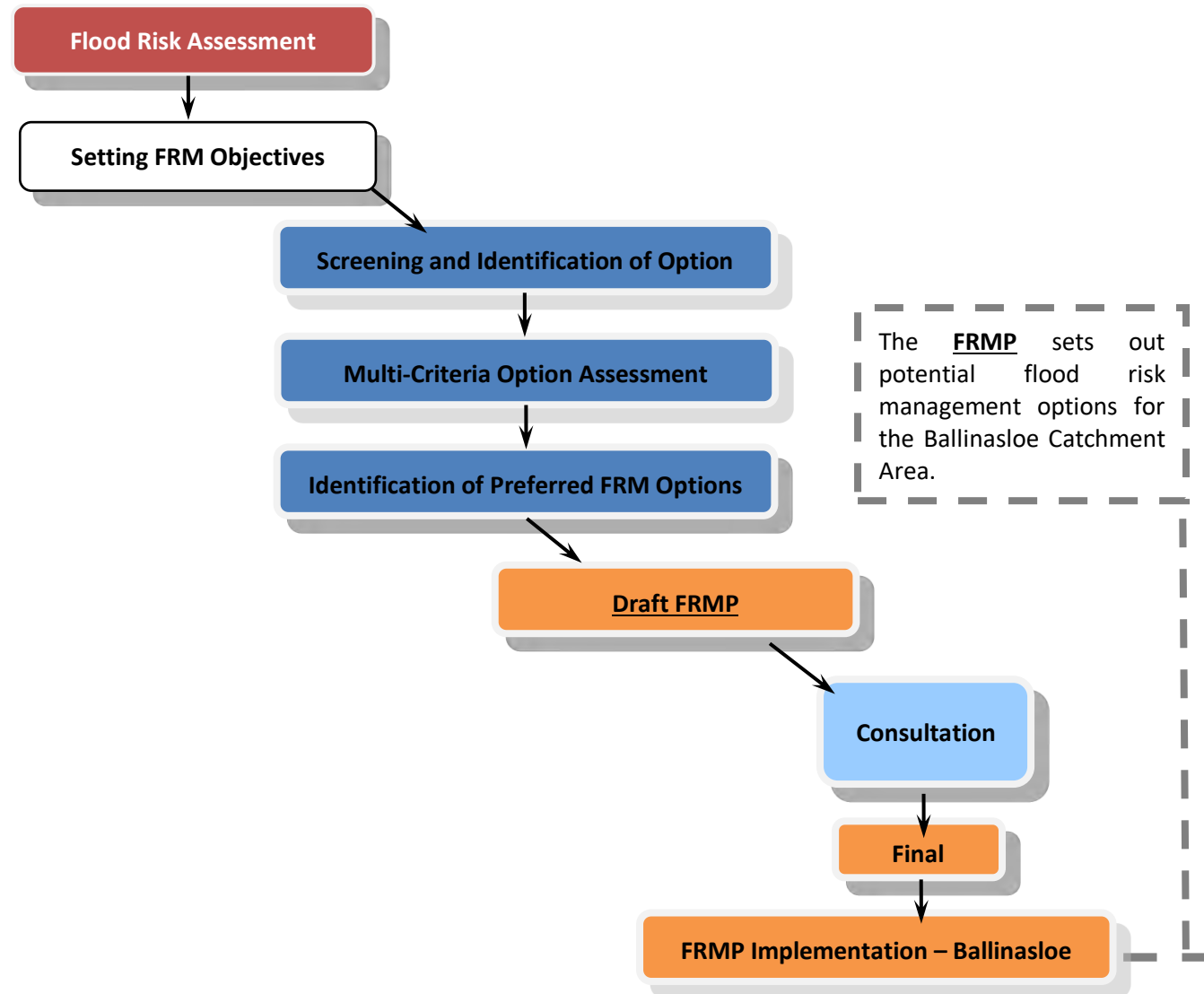
ARUP

**Hydro
Environmental Ltd**

RYAN HANLEY

Ballinasloe Flood Relief Scheme

Flood Risk Management Plan Process



Shannon Catchment Flood Risk Assessment and Management (CFRAM) Study

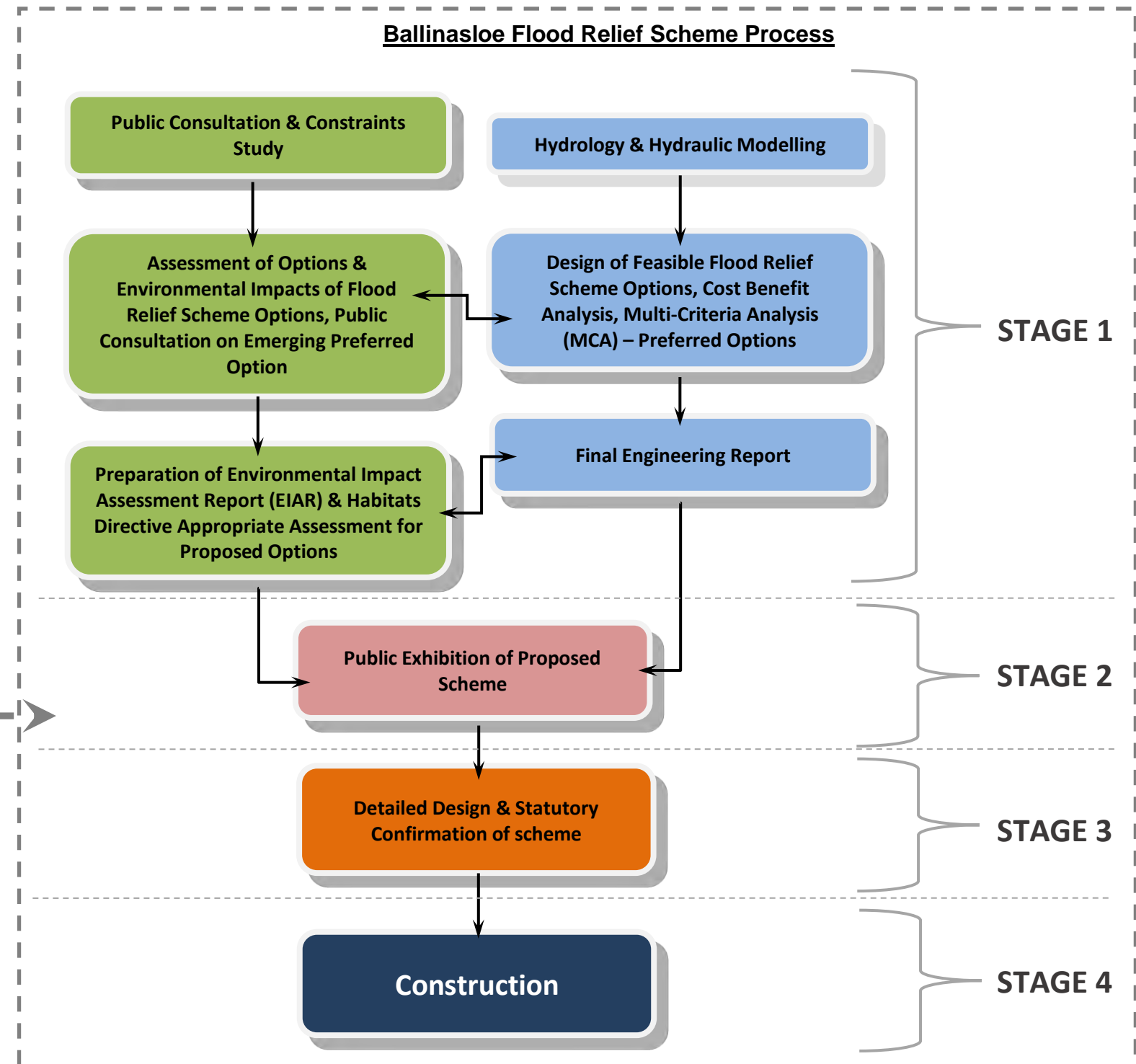
As part of the Catchment and Flood Risk Assessment and Management (CFRAM) Plan of the country, the Shannon Study was finalised in May 2018.

The Shannon CFRAM Study Area identified Ballinasloe as an Area of Further Assessment (AFA) due to its long history of flooding from the River Suck, Deerpark River and other local tributaries. This study comprised detailed hydrologic and hydraulic assessments of the current scenario of flood risk and the proposed flood relief options for the town were determined in the Shannon Catchment Flood Risk Assessment and Management Plan (CFRAM).

Following on from the CFRAM study, the OPW in partnership with Galway County Council have appointed ARUP in conjunction with Hydro – Environmental Ltd (Engineering) and Ryan Hanley Consulting (Environmental) to undertake the development and implementation of a flood relief scheme (FRS) for Ballinasloe.

Ballinasloe Flood Relief Scheme

The chart below shows how the Ballinasloe Flood Relief Scheme follows on from the Shannon Catchment Flood Risk Management (CFRAM) plan and details the interaction between the Environmental Study and the Engineering Study for the Scheme.



Ballinasloe

FLOOD RELIEF SCHEME

