

RIVER DEEL (CROSSMOLINA) Flood Relief Scheme Project Newsletter



December 2025



Comhairle Contae Mhaigh Eo
Mayo County Council



OPW

Oifig na
nOibreacha Poiblí
Office of Public Works

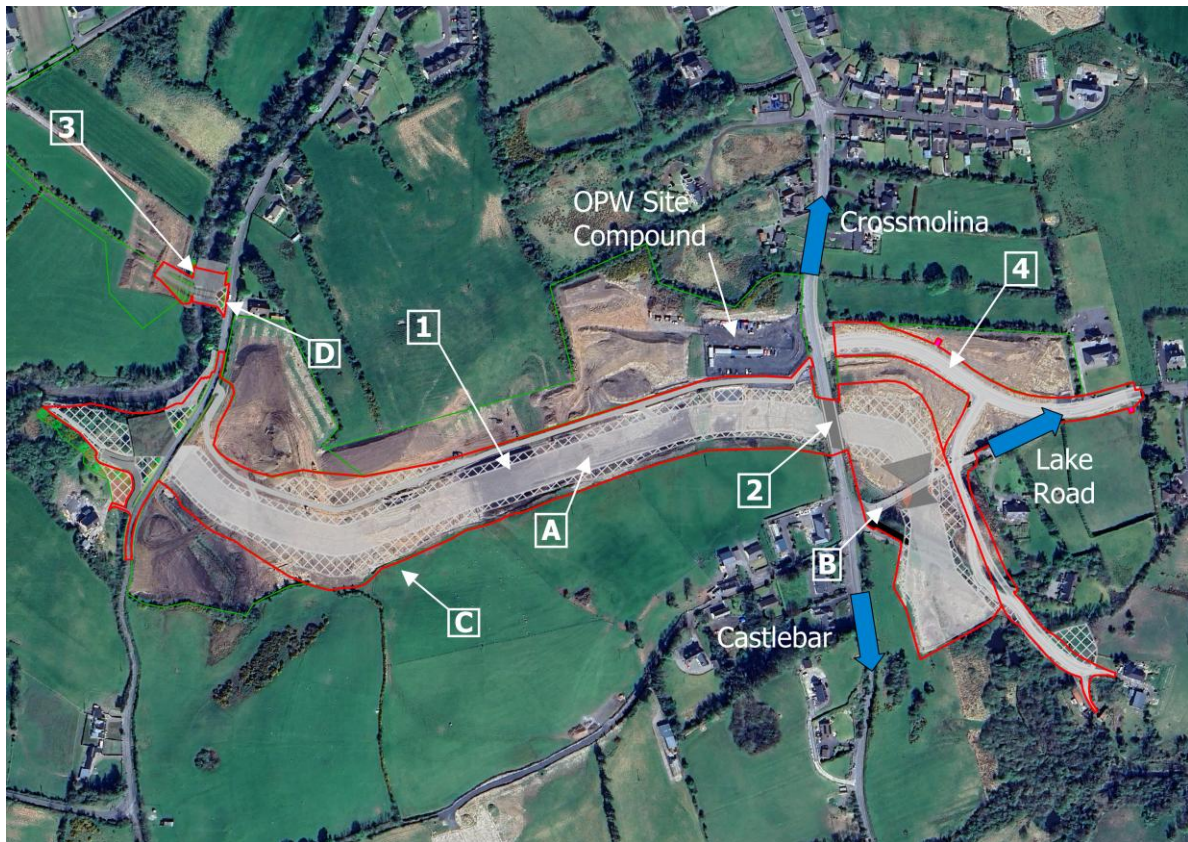
RYAN HANLEY

now



Ongoing/Upcoming Works

The OPW will continue works in the **next six months** across the scheme in the Mullenmore area and the Pollnacross area. The main works can be found labelled (1) – (4) on the map below:



① Excavation of Channel to Continue



The 1km drainage channel that will divert excess flood waters away from Crossmolina Town involves the excavation of over **170,000m³** of material. The excavation of a section of this channel will continue.

② Construction of Mullenmore Bridge has Commenced Due to Lake Road Diversion Being Available

A bridge will be required over the drainage channel. This will require a temporary closure of the R315 and will commence in the next period due to the temporary diversion being available via a section of the new Lake Road. Some accommodation works have commenced; including, utility diversions, etc.



③ Construction of Next Phase of River Flow Control Structure



Construction will continue during the next working season in the Deel River from July to September 2026.



Comhairle Contae Mhaigh Eo
Mayo County Council



OPW

Oifig na
nOibreacha Poiblí
Office of Public Works

RYAN HANLEY now

Stantec

④ Temporary Traffic Diversion Route

The Temporary Traffic Diversion Route will continue to be in operation in order to facilitate the construction of the Mullenmore Bridge.



Project Update

① The 'Channel Excavation' has been ongoing in earnest with the OPW having excavated and removed more than 180,000 tonnes of material to date at an average rate of 10,000 tonnes per week.



② The 'New Lake Road' has been constructed and is now opened to the public. It provides the new route from the R315 Regional Road to Gortnor Abbey and Gortnaraby Pier. The New Lake Road also forms part of the Temporary Traffic Diversion Route that is in place to facilitate the closure of a section of the R315 Regional Road since the 6th of October.



③ As the sand deposits in the hills at Pollnacross were opened up, it was found that the sand martins would use these hills to create burrows/ nests. As a result, the OPW created sacrificial mounds, which fortunately, the sand martins preferred and made their home by burrowing into the sandy soils. After a successful breeding season in North County Mayo, they've made their way south to sunnier climates for the winter.





④ The OPW managed to construct a significant section of the River Flow Control Structure base and the western abutment wall. This necessitated instream works within the River Deel which required the installation of a temporary dam to create a suitable working area. The instream work was carried out with permission and in consultation with the relevant environmental agencies.



Additional Information



Additional information and further updates can be found on the Project Website:

www.floodinfo.ie/frs/en/crossmolina

For those accessing this Newsletter through the Project Website, browse the various webpages for more information on the scheme.



Comhairle Contae Mhaigh Eo
Mayo County Council



OPW

Oifig na
nOibreacha Poiblí
Office of Public Works

RYAN HANLEY now

 **Stantec**